

We began as  
**Oregon Bag Co.** Established 1954



**65**  
**YEARS**  
**STRONG**  
SINCE 1954

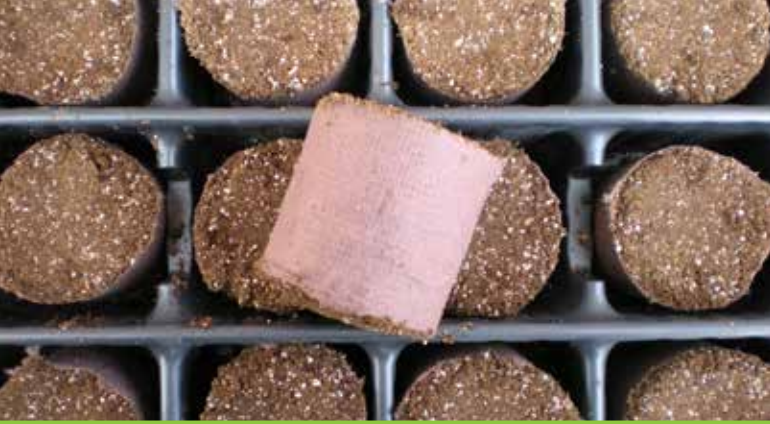
**OBC** ***NORTHWEST, INC.***

**Nursery & Greenhouse Supplies**

*Everything you need to grow!*

**1-800-477-4744**  
(503) 266-2021 | Fax: (503) 266-6837  
Supply Catalog, Printed 2019

Monday-Friday: 7:30am - 5:00pm  
1076 SW Berg Pkwy, Canby OR 97013  
[www.obcnw.com](http://www.obcnw.com)



**OBC NORTHWEST, INC.**  
**Nursery & Greenhouse Supplies**  
*Everything you need to grow!*





*Trevor Boyce, Melanie Miller, Ray Scesa & Tracy Boyce*



*Charles Boyce & Tracy Boyce*



# OBC NORTHWEST INC.

In 1954, in an aging old pickle plant in Aurora, Oregon Bag Company had its beginning. With founder Charles (Charlie) Boyce, and a small core of determined employees, a burlap bag company was born to service the entire Willamette Valley and Southern Washington.

As time passed, the company grew and the product lines changed to include paper bags, leno mesh bags, cotton bags and even sleeping bags. In 1962 the company was expanded and moved to Canby; a larger facility and more employees were needed to accommodate the ever-increasing business.

The company continued to grow, mostly by adding new lines to promote the nursery industry. During the eighties, OBC saw it's bag business dying, due to strong demand for imported bags shipped into the US and sold for less than locally produced bags.

The decision was made by OBC to expand into the horticultural market and let the bag business continue as long as it could remain profitable. Greenhouse manufacturing was added to the product mix,

opening the door to a new segment of the nursery industry.

New buildings were constructed to accommodate the growth, along with customer service support and sales staff. A name change was introduced to move away from the idea of a bag business, but was designed to keep in mind the company's successful history: OBC Northwest, Inc. was adopted in 1989.

Today, OBC Northwest, Inc. operates within four acres of manufacturing and warehouse facilities to service both the agricultural and the horticultural industry.

It is with great pride that we still represent the spirit of our original employees: In order to succeed, we as employees must have a commitment for turning in the best possible performance on every job... in every department... for every customer... every day.



# CONTENTS

Company History..... 1 ■

Delivery Schedule, Terms & Conditions ..... 3 ■

B & B Supplies/Accessories..... 4-8 ■

Tapes & Ties ..... 9-11 ■

Grafting & Budding Supplies ..... 12-13 ■

Bamboo..... 14 ■

Tools ..... 15-22 ■

Labeling Tools..... 23-27 ■

Propagation & Christmas Tree Supplies..... 28-29 ■

Watering Supplies..... 30-35 ■

Earthpots & Soil..... 36-39 ■

Fertilizers, Chemicals & Chemical Accessories ..... 40-45 ■

Carts & Trailers ..... 46 ■

Greenhouses & Greenhouse Accessories ..... 47-58 ■

Covers..... 59-64 ■

Containers..... 65-77 ■

Seeders, Plug Popper & Dibble Pro..... 77-78 ■

Product Index ..... 79-80 ■

Credit application ..... 81 ■



Melanie Miller  
EARTHPOTS Sales



Caylan Gingerich  
EARTHPOTS Sales



Gary Kessel  
Oregon Sales



Jay Cushman  
Greenhouse Sales



Jay Gilbertson  
Washington Sales



Shane Johnson  
California Sales



Don Knievel  
Territory Sales



Jen Scheler  
Office Manager



Jessica Christenson  
Purchasing Agent



Jeanette Ruiz  
Customer Service



Katelyn Shoop  
Customer Service



Tony Davis  
Customer Service



Diane Borland  
Accounting Manager



Brianna Berreth  
Accounts Receivable



Giovanni Rios  
Production Manager



Trevor Boyce  
Inventory Manager



Dave Bell  
Warehouse Manager



Rich Morales  
Warehouse Lead



Alan Hathaway  
Driver



Jason Weaver  
Driver / Warehouse



Randy Epperly  
Driver / Warehouse



Russ Trudeau  
Driver



Z Vymazal  
Driver/Warehouse



Armando Rios  
Warehouse

**CALL TOLL FREE 1-800-477-4744**

(503) 266-2021 | Fax: (503) 266-6837

Email: [obc@obcnw.com](mailto:obc@obcnw.com)  
www.obcnw.com

**STORE HOURS**

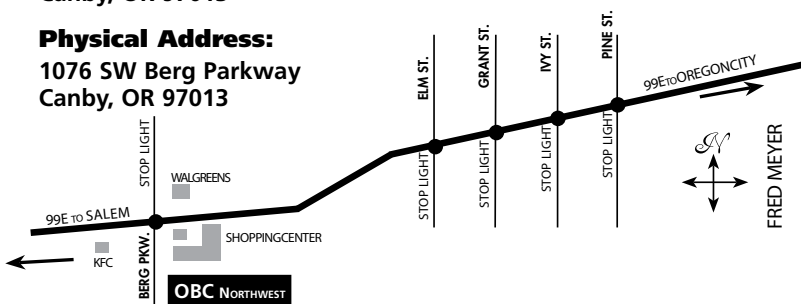
Monday – Friday 7:30 am to 5:00 pm

**Mailing Address:**

P.O. Box 759  
Canby, OR 97013

**Physical Address:**

1076 SW Berg Parkway  
Canby, OR 97013



## Delivery Charges

The fuel charge will vary depending on location; with an order of \$350 or more, we will deliver your order as follows: a fuel charge of \$20 on our local delivery route, \$50 will be applied for long distance deliveries, and \$60 for deliveries to Canada. For orders under \$350, a fuel charge of \$65 will be added for local deliveries and \$85 for long distance deliveries within our delivery area. Orders need to be placed no later than 3:00 pm the day before delivery for stocked items. Canadian orders need to be placed by noon the Thursday before delivery.

Deliveries outside our regularly scheduled delivery area can be arranged by motor freight or common carrier.

## Regular Delivery Schedule

### MONDAYS

**SOUTHWEST:** Amity, Carlton, Dallas, Dayton, Dundee, Independence, Keizer, Lafayette, Lake Oswego, McMinnville, Monmouth, Newberg, Rickreall, St. Paul, West Salem, Sheridan, Sherwood, Tualatin, West Linn, Willamina, Wilsonville, Yamhill.

**NORTH:** Washington I-5 Corridor (north of Ridgefield) to Vancouver B.C. (Two Day Run)

### TUESDAYS

**EAST:** Boring, Colton, Eagle Creek, Estacada, Gladstone, Gresham, Milwaukie, Molalla, Oregon City, East Portland, Sandy.

### WEDNESDAYS & FRIDAYS

**SOUTH:** Albany, Alvadore, Aumsville, Aurora, Brooks, Brownsville, Corvallis, Creswell, Eugene, Gervais, Halsey, Harrisburg, Jefferson, Junction City, Lebanon, Lowell, Monroe, Mount Angel, Philomath, Pleasant Hill, East Salem, Scio, Shedd, Silverton, Stayton, Sublimity, Sweet Home, Tangent, Turner, Woodburn.

### THURSDAYS

**EAST:** Battleground WA, Boring, Brush Prairie WA, Gresham, Oregon City, East Portland, Ridgefield WA, Sandy, Vancouver WA, Woodland WA.

**WEST:** Aloha, Banks, Beaverton, Cornelius, Forest Grove, Gaston, Hillsboro, Kansas City, North Plains, NW Portland, Tigard, St. Helens, West Linn, Wilsonville.

### FAR SOUTH RUN

Truck leaves for a two day run every two weeks, orders permitting. Route: Cottage Grove I-5 to the Oregon-California border.

### PENINSULA RUN

Every other Thursday. Sauvie Island area and Washington Peninsula.

*If you are not covered by our delivery schedule or would like additional information, please call 1-800-477-4744 and we can discuss other possibilities.*

## Terms & Conditions

### Customers

Customers who have established credit with OBC Northwest will receive net 30 days terms. Invoices are due 30 days from the invoice date and will be charged a late payment charge of 1.5% interest per month. All returned checks will be charged a \$25.00 handling fee.

### New Accounts

To establish credit, simply fill out the credit application enclosed and mail or fax to us. Please give satisfactory Trade References. Please allow two weeks to verify references. If purchases must be made and credit is not established, a payment will be required or cash upon delivery or pickup.

### Payment

Terms net 30 days unless otherwise stated on the invoice. Past due accounts will include interest at the rate of one and a half percent per month until paid and expenses of collection, including reasonable attorneys fees, whether or not litigation is commenced. If litigation is brought, customer agrees to jurisdiction of the Oregon courts. To our Net 30 day accounts; OBC does not accept the use of Credit Cards for any part of your outstanding balance.

### Returns

Authorization is required before returns will be accepted. All products returned must be accompanied with the invoice and returned in its original condition, unless product has not performed within written warranties. Goods must be returned within 30 days of shipment in order to receive credit. Goods that have been special ordered or that are not a stock item may not be returned unless prior arrangements have been made. Burlap cannot be returned. All returns will be assessed a handling charge of 20% unless otherwise authorized.

### Special Orders

A deposit of 50% is required on special orders. Customers are responsible for the cost incurred on special orders that are cancelled.

### Freight Claims

Freight claims must be filed immediately. Claims for lost or damaged materials and freight charges must be made with the transportation company. Claims for lost or damaged materials and transportation charges may not be deducted from our invoice, nor may payment of invoice be withheld awaiting adjustments of such claims, since it is the function of the freight company to guarantee safe delivery. Claims for missing or damaged products delivered by an OBC truck must be made immediately by calling the office at 1-800-477-4744.

### Limited Warranty

This warranty contains the entire agreement between the parties with respect to the products and goods subject hereto, which products have been assembled from goods supplied to seller by other manufacturers and dealers. Seller makes no representations or warranties expressed or implied relative to the products and goods, except that the products and goods sold here under are of the standard quality and specifications for such products and goods sold by seller. Buyer assumes all risk and liability resulting from the use of product and goods. If any sample was shown buyer, such sample was used mainly to illustrate the general type and quality of the product and goods. Seller makes no warranty that they are fit for any particular purpose or that they will endure for any particular length of time.

### Causes Beyond Seller's Control

Seller shall not be liable for failure to deliver or delays in delivery occasioned by causes beyond Seller's control, including without limitation strikes, lock-out, fire, inability to obtain materials or shipping space, break-downs, delays of carriers or suppliers, weather and road conditions, and governmental acts and regulations.

### Shipping

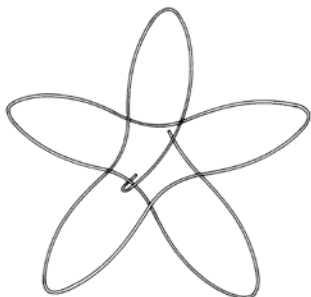
All supplies shipped F.O.B. our warehouse unless quantity shipments can be arranged direct from the manufacturer. We have no licensing requirements for purchases. Please see page 3 for our regular shipping schedule.

### Please Note:

OBC Northwest Inc. gladly accepts Visa, American Express or Master Card for purchases done at time of placing order. Visa, American Express or Master Card can be used in lieu of COD purchases. To our Net 30 day accounts; OBC does not accept the use of Credit Cards for any part of your outstanding balance.

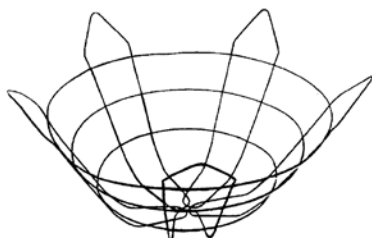


## Flat Baskets



Prod. Code	Size	Bndl/Pal Qty	Ball Diam.	Burlap Sq.	Weight Per Bdl.(lbs)
WBFB26	26"	25/1300	8-10"	28x28"	9.0
WBFB30	30"	25/1300	10-12"	30x30"	11.25
WBFB36	36"	25/1300	14-18"	36x36"	18.75
WBFB42	42"	25/1300	20-24"	48x48"	20.0
WBFB48	48"	25/1300	24-28"	60x60"	21.5
WBFB54	54"	25/1300	30-36"	72x72"	23.25
WBFB80	80"	10	45-53"	108x108"	30.0
WBFB100	100"	5	55-60"	120x120"	43.0

## Optimal Wire Baskets



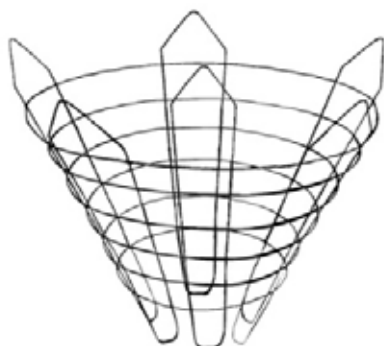
Prod. Code	Size (Top x Bottom x Height)	Bndl/Pal Qty	No. of Rings	No. of Verticals	Weight(lbs)
WBOCB24	24" x 16" x 10"	25/1350 700	3	4	1.44
WBOCB28	28" x 19" x 10"	15/630	3	5	1.66
WBOCB32	32" x 20" x 12"	15/330	3	5	2.65
WBOCB36	36" x 17.5" x 17.5"	10/200	4	5	3.19
WBOCB40	40" x 21.5" x 17.5"	10/160	4	5	4.00
WBOCB45	45" x 21.5" x 22"	5/150	5	6	5.42
WBOCB48	48" x 24" x 22"	5/150	5	6	6.17
WBOCB54	54" x 26" x 25"	5/120	6	6	7.54
WBOCB60	60" x 28" x 27.5"	5/100	6	8	11.08

## Cone-Style 30° Baskets



Prod. Code	Size (Top x Bottom x Height)	Bndl/Pal Qty	No. of Rings	No. of Verticals	Liner Size	Weight(lbs)
WBCCB24	24" x 10" x 13.5"	25/1000	3	4	36" x 40"	1.49
WBCCB28	28" x 11" x 18"	15/540	4	5	45" x 45"	2.46
WBCCB32	32" x 13" x 20"	15/180	4	5	54" x 50"	2.76
WBCCB36	36" x 14" x 24"	10/160	5	5	54" x 60"	3.43
WBCCB40	40" x 16" x 24"	10/150	5	8	60" x 60"	3.50

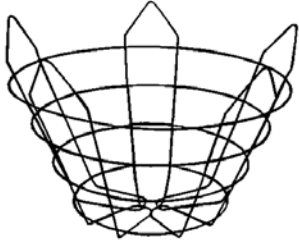
## Large Big John Wire Baskets



Prod. Code	Size (Top x Bottom x Height)	Bndl/Pal Qty	Lifting Lugs	Weight
<b>Bottom Forming (Open Bottom) Baskets</b>				
WBBJ70C	72" x 30-3/8" x 44-3/16"	1/75	3	38 lb.
WBBJ87C	87" x 39-1/2" x 42"	1/50	4	50 lb.

\* other sizes available

Call or go online for large quantity orders, additional info and current prices.



## Vermeer Short 25° Baskets

Prod. Code	Size (Top x Bottom x Height)	Bndl/Pal Qty	No. of Rings	No. of Verticals	Liner Size	Weight(lbs)
WBVSCB24	24" x 15" x 11"	25/700	3	5	36" x 40"	1.49
WBVSCB28	28" x 16" x 13.5"	15/540	3	5	40" x 45"	1.66
WBVSCB32	32" x 20" x 15"	25/330	3	5	48" x 48"	2.65
WBVSCB36	36" x 20" x 18"	10/150	4	5	54" x 54"	3.49
WBVSCB40	40" x 24" x 18"	10/150	4	5	60" x 60"	4.21
WBVSCB44	44" x 25" x 22"	10/130	4	6	72" x 72"	4.54

## Vermeer Deep 25° Baskets

Prod. Code	Size (Top x Bottom x Height)	Bndl/Pal Qty	No. of Rings	No. of Verticals	Liner Size	Weight(lbs)
------------	------------------------------	--------------	--------------	------------------	------------	-------------

### Closed Bottom

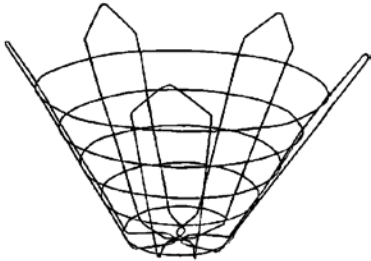
WBVDCB20	20" x 12" x 11"	25/1150	3	4	30" x 36"	1.40
WBVDCB24	24" x 12" x 13.5"	25/900	3	4	36" x 40"	1.49
WBVDCB28	28" x 12" x 18"	15/495 540	4	5	45" x 45"	2.45
WBVDCB32	32" x 16" x 20"	15/240	5	5	48" x 50"	2.87
WBVDCB36	36" x 16" x 24"	10/120 110	5	5	54" x 60"	3.55
WBVDCB40	40" x 20" x 24"	10/120	5	5	60" x 60"	4.61
WBVDCB44	44" x 20" x 27.5"	10/110	5	5	72" x 72"	5.34
WBVDCB50	50" x 23" x 30"	5/100	5	6	72" x 80"	6.25
WBVDCB54	54" x 27" x 32"	5/80	5	7	72" x 80"	7.49

### Bottom Forming (Open Bottom)

WBVDBF60	60" x 29.5" x 35"	5/80	6	8	85" x 96"	9.24
----------	-------------------	------	---	---	-----------	------

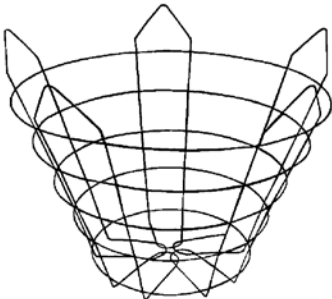
### Large Vermeer Wire basket (Bottom Forming)

WBVDBF70	70" x 31" x 36.5"	1/65	7	8	120"x120"	10
WBVDBF80	80" x 35" x 41"	1/55	7	8	135"x135"	12
WBVDBF90	90" x 40" x 56"	1/40	7	8	135"x135"	12



## Truncated 22° Baskets

Prod. Code	Size (Top x Bottom x Height)	Bndl/Pal Qty	No. of Rings	No. of Verticals	Liner Size	Weight(lbs)
WBTCB18	18" x 10.5" x 10"	25/1150	3	4	30" x 36"	.75
WBTCB20	20" x 12" x 11"	25/700	3	4	30" x 36"	1.15
WBTCB24	24" x 14" x 13.5"	15/660	3	5	40" x 40"	1.58
WBTCB26	26" x 14" x 15"	15/405	4	5	45" x 45"	2.25
WBTCB28	28" x 15" x 18"	15/210	4	5	45" x 45"	2.38
WBTCB32	32" x 18" x 20.25"	15/1150	5	5	48" x 50"	3.04
WBTCB36	36" x 21" x 24"	10/110	5	5	54" x 60"	3.21
WBTCB40	40" x 24" x 24"	10/100	5	5	60" x 60"	5.4





### Burlap Definition:

The durability of the fabric depends on several factors like usage of different fibers, structure of the fibers and the soil condition. The fabric is manufactured from 100% natural jute fibers. This material decomposes completely in the soil. Durability: approx. up to 3 months. Indications on durability are based on average conditions. These may vary considerably, depending on soil condition, moisture levels and temperature. Durability can, therefore, not be guaranteed.

### Burlap Rolls

Our rolled burlap is available both treated and untreated. Treated burlap is sold in 500 yard rolls. Untreated burlap is sold in rolls of 100 yards. Plain burlap can also be put up in 500 yard rolls.

Our burlap is treated with the only EPA approved copper formula, which is monitored on a daily basis to ensure the correct percentages.

**Available in 7 oz. or heavy weight**  
**Stock Rolls: 36"; 40"; 48"; 60" and 72" wide**

### Burlap Basket Liners

OBC Northwest manufactures basket liners to fit into wire baskets at our factory in Canby, Oregon. We have the capability to manufacture treated and plain liners. If you require a special design, we can engineer and fabricate almost anything.

**Available in 7 oz. or heavy weight**

## Burlap Nursery Squares

Don't be fooled by inferior, low-cost squares that will not last the season. OBC Northwest offers the best quality, long-lasting, EPA approved burlap squares on the market today. Squares are available both treated and untreated.

**Note:** Due to varying conditions, longevity of treated burlap cannot be guaranteed.

**7 oz. stock; Heavy stock available upon request.**

Prod. Code (Treated)	Prod. Code (Untreated)	Square Size	Quantity/Bundle	Weight/Bundle	Avg. Ball Diameter
NST24	NSP24	24x24"	100	18	6"- 8"
NST28	NSP28	28x28"	100	27	8"-10"
NST30	NSP30	30x30"	100	27	10"-12"
NST32	NSP32	32x32"	100	40	12"-14"
NST36	NSP36	36x36"	100	44	14"-16"
NST40	NSP40	40x40"	100	48	18"-20"
NST45	NSP45	45x45"	50	32	20"-22"
NST48	NSP48	48x48"	50	47	22"-24"
NST54	NSP54	54x54"	50	50	24"-26"
NST60	NSP60	60x60"	50	61	26"-28"
NST72	NSP72	72x72"	25	45	30"-34"
NST80	NSP80	80x80"	10	23	36"-40"
NST96	NSP96	96x96"	10	38	42"-48"



## Sisal & Poly Twine

Prod. Code	Twine Type	Yield/Bale	Weight	Put-Up	Approx. Knot Strength
TS1PT1010EA	1-ply Sisal, Treated	15,000 ft.	10 lb.	10# ball	110 lb.
TS2PT1010EA	2-ply Sisal, Treated	7,500 ft.	10 lb.	10# ball	170 lb.
TS3PT1010EA	3-ply Sisal, Treated		10 lb.	10# ball	600# tensile
TS1PP1010EA	1-ply Sisal, Plain, Uncoiled	15,000 ft.	10 lb.	10# ball	105 lb.
TS2PP1010EA	2-ply Sisal, Plain, Uncoiled	7,500 ft.	10 lb.	10# ball	160 lb.
TS9000	9,000 Sisal Baler, Oiled	8,600 ft.	40 lb.	2-20# balls	135 lb.
TS7200	7,200 Sisal Baler, Oiled	6,800 ft.	40 lb.	2-20# balls	160 lb.
TS550B	550 Sisal Binder Twine, Oiled	27,500 ft.	50 lb.	10-5# balls	55 lb.
TS1PTXHD	1-ply Treated/X-Heavy Duty	9,250 ft.	50 lb.	10-5# balls	390# tensile
TP9000	9,000 Poly Baler, Orange	9,000 ft.	20 lb.	2-9# balls	130 lb.
TP7200	7,200 Poly Baler, Orange	7,200 ft.	20 lb.	2-9# balls	180 lb.
TP7200Y	7,200 Poly Baler, Yellow	7,200 ft.	20 lb.	2-9# balls	160 lb.
TP5000	5,000 Poly Baler, Orange	5,000 ft.	16 lb.	16# ball	210 lb.
TSF850	850 Poly Split Film, White	850 ft./lb.	10 lb.	10# ball	85 lb.
TSF650	650 Poly Split Film, White	650 ft./lb.	10 lb.	10# ball	125 lb.
TSF550	550 Poly Split Film, White	550 ft./lb.	10 lb.	10# ball	140 lb.
TPTL	950 Tree Lock Rope, Black	190 ft./lb.	5 lb.	5# balls	640# tensile
TSX	1/2" Strapex	15,600 ft.	60 lb.	4-15# coils	675# tensile
TSX34	3/4" Strapex	8,400 ft.	50 lb.	4-12# coils	1035# tensile
TPXTT	Xmas Tree Tying twine	57,600 ft.	40 lb.	8-5# balls	90# tensile
TPXTTR	Xmas Tree Tying twine, Red	57,600 ft.	40 lb.	8-5# balls	90# tensile



Call or go online for large quantity orders, additional info and current prices.





## B & B Cart

Lift the ball right from the hole.  
Made of heavy 1 inch tube frame, with 15x6.00-6 tires. 1,100 lb. capacity.

Prod. Code	Weight
HKCKB30	80 lb.
HKCKB36	100 lb.

## Wire Basket Crimper



For crimping your wire baskets snug to the root ball.  
Made of 1-inch round tubing.

Prod. Code	Size	Wt. Lb.
WBC36	12"x3'	2.75
WBC12	12"x12"	2
WBC12P	12"x12" pigtail	2

## Container Cart

Can carry a 25 gallon pot.  
1,100 lb. capacity.



Prod. Code	Weight
HKCKBG25	105 lb.

## Stretch Wrap

Sold by the roll. Four rolls per case.

Prod. Code	Size	Weight
MSSW1580	15" x 80 GA.	9 lb.



## Barnel BB / Pack-It Tree Tote

Select wide to hold odd shapes securely or tapered to fit easily under root balls and nursery containers.

Prod. Code	Description	No. Bars	Weight
MSP7W	Wide	7	3 lb.

## Amaroo Tree Boxes



- 4-way fork-liftable base.
- Root directors prevent root circling.
- Reusable container is easily assembled and disassembled.
- Air vents for ample drainage and root pruning.
- Customized options available, including: drainage vents, multiple colors and customer name/phone number.

For specifications, see page 75



## Nylon Sling

For lifting heavy baskets, trees, shrubs, etc. Custom sizes are available.

Prod. Code	Size	Vertical Hold	Basket Hold	Choke Hold	Weight
MSS34	3" x 4'	5,400 lb.	10,800 lb.	4,000 lb.	2 lb.
MSS44	4" x 4'-6"	7,200 lb.	14,400 lb.	5,400 lb.	2.5 lb.
MSS45	4" x 5'	7,200 lb.	14,400 lb.	5,400 lb.	3 lb.
MSS46	4" x 6'	7,200 lb.	14,400 lb.	5,400 lb.	3.5 lb.

## Carrier Mill Bastard File



Prod. Code	Description	Size	Weight
HMF10B	Bastard Smooth Cut File	1" x 10"	.5 lb.
HMF14B	Bastard File	1-1/4" x 14"	1.25 lb.

## Hog Ring Stapler

Self-feeding, wraps staples around twisted neck of burlap. Faster and easier than sewing on burlap balls.



Prod. Code.	Description	Wt. Lbs.
HMSTAG7	G-7 Hog Ring Stapler	1
HMSTA	Hog Ring Staples 2500 Staples/box	2.75

## Pneumatic Stapler

Prod. Code.	Description	Quantity
HMSTASC743	Pneumatic Stapler	1
HMSTA16GA110	Pneumatic Staples	11,000/cs

## Pinning Nails

Oval head pinning nails used for pinning burlap in place on B&B root balls. Packaged in 50 lb. boxes.



Prod. Code	Size	Length
HMPN	6-D	2.25"

Approximately 14,250 nails per 50 pound box.

## Calipers



HMCA

### OBC Aluminum Pocket Tree Caliper

Measures from 3mm up to 3/4 inch.



HMCP

### Plastic Pocket Tree Caliper

Measures upto 7 inches.

## Paper Tree Wrap

Protects against sun-scald, loss of moisture and insect attacks. 10 rolls/case. Sold by the roll.



Prod. Code	Roll Size	Wt. Lbs.
MSTPTW4150	4" x 150'	2
MSTPC12600	12" x 600' Cronel Plus (poly)	6" perf

## Plastic Tree Trunk Protectors

Can be applied in the fall and over-wintered without breaking down like corrugated paper products. The white outside will help reflect sunlight and protect the trunk from sun-scald. The protector will also act as a cushion when the tree is shipped and help prevent trunk damage. Sold by bundles or pallets.



Prod. Code	Size	Bundle	Pallet
MSTPPTG	12" x 32"	100	1200

## Ring Knives

Twine ring knife; the ring is aluminum, rivets are nickel-plated brass and the blade is a heat-treated 1095 high carbon steel. Wear on a finger of either hand. Sizes 8 thru 15 12/box. Sold individually.



Prod. Code	Size	Wt. Lbs./Dz.
HRK06	6	.25
HRK07	7	.25
HRK08	8	.25
HRK09	9	.25
HRK10	10	.25
HRK11	11	.25
HRK12	12	.25
HRK13	13	.25
HRK14	14	.25
HRK15	15	.25

## Coated Ring Knives



Prod. Code	Size	Color	Ring Wrap
HRKPMED	Fits size 12-15	Green	Plastic
HRKV12	12	Red	Vinyl
HRKV13	13	Hunter Green	Vinyl
HRKV14	14	Orange	Vinyl

Call or go online for large quantity orders, additional info and current prices.



## Stretch Ties

35% faster than hand tying. No machines to lose, break, jam or buy. Tighter than machines and less reworking. Developed by nursery professionals. Available in 6" and 10" lengths. Sold by the box, 4000 per box.

Prod. Code	Description	Weight
FTST	6" Stretch Tie	8 lb.
FTST10	10" Stretch Tie	14 lb.



## Rubber Bands

For use on rhododendrons etc. Wrap branches tight to tree or bush to prevent whipping and broken branches during shipping. Sold by the pound. 5 lb. bags, 25 lb./cs.

**For large quantities, order in October for February/March delivery. Call for prices.**

Prod. Code.	Size	Quantity Per Lb.
TRB107	3/4 x 7"	45



## Chain Lock

Heavy gauge plastic, adjustable lock. For supporting trees and plants when staking is required. Supplied on 100' reels.

Prod. Code	Size Tie/Description	Wt. Lbs.
FTIA3100	1/2" x 100'	3
FTIA5100	1" x 100'	5

## Plant Ties

Eight inch hard and soft ties. Easy to apply in cold or warm weather. Packaged in bundles of 1000. Prices per 1000. Weight: 1 lb./per 1000; 30,000 per case.

Prod. Code	Size Tie/Desc.
FTIPTH	8" hard tie
FTIPTS	8" soft tie



## Insta-Ties

Available in red or green. Wire reinforced paper ties. Inexpensive and easy to use.

Prod. Code (Red or Green)	Length	Qty./Bndl	Qty./Case
FTINB04RBN or FTINB04GBN	4"	250	25,000
FTINB05RBN or FTINB05GBN	5"	250	25,000
FTINB06RBN or FTINB06GBN	6"	250	25,000
FTINB07RBN or FTINB07GBN	7"	250	25,000
FTINB08RBN or FTINB08GBN	8"	250	25,000
FTINB10RBN or FTINB10GBN	10"	250	25,000
FTINB12RBN or FTINB12GBN	12"	250	10,000
FTINB14RBN or FTINB14GBN	14"	250	10,000
FTIN18R	18"	125	10,000

*Note: 4"-8" There are 100 bundles per case. 10"-14" There are 40 bundles per case.*



## Ty'm Up Tape

Vinyl tape used for training and staking plants. Strong, stretchy, long lasting. The Miracle Garden Tie and Standard Tye can be used in the Max Tapeners. Priced per roll.



### Miracle Garden Tie 1/2" Tape (Fits HTB & HTR tapener)

Prod. Code.	Size	Rolls/Pack	Rolls/Case	Wt./Pk.
FTM3440	1/2"x 120'x 4 mil green	24	288	3.75 lb.
FTM3441	1/2"x 80'x 6 mil green	24	288	3.75 lb.
FTM3442	1/2"x 60'x 8 mil green	24	288	3.75 lb.

### Standard Tye 1/2" Tape (Fits HTB-2 & HTR-2 tapener)

Prod. Code.	Size	Roll/Pack	Rolls/Case	Wt./Pk.
FTM3400	#3400 1/2"x 300'x 4 mil green tape	24	144	6 lb.
FTM1254	1/2"x 300'x 4 mil green tape	24	96	6 lb.
FTM1256E	12-5-6E 1/2"x 200'x 6 mil green tape (machine)	24	96	6 lb.
FTM1258E	12-5-8E 1/2"x 150'x 8 mil green tape (machine)	24	96	6 lb.
FTM1258EW	12-5-8EW 1/2"x 150'x 8 mil white tape (machine)	24	96	6 lb.

### Jumbo Tye 1" Tape (For Hand Tying)

Prod. Code.	Size	Rolls/Pack	Rolls/Case	Wt./Pk.
FTM1216	12-1-6 1"x 200' 6 mil green	12	48	7.5 lb.
FTM1218	12-1-8 1"x 150' 8 mil green	12	48	7.5 lb.
FTM3421	#3421 1"x 150' 8 mil green	12	72	7.5 lb.
FTM12112	12-1-12 1"x 100' 12 mil green	12	48	7.5 lb.
FTM3422	#3422 1"x 100' 12 mil green	12	72	7.5 lb.

## Max Tapes (Fits HTB & HTR)

Max 1/2" tapes - Sold by the box. 10 rolls per box. 300 rolls/case

Prod. Code.	Size	Rolls/Pack	Rolls/Case	Wt./Pk.
FTMAX10	1/2"x 134'x 4 mil white	10	300	1.2 lb.
FTMAX15	1/2"x 87'x 6 mil blue	10	300	1.2 lb.
FTMAX25	1/2"x 54'x 10 mil red	10	300	1.2 lb.



## Chip Budding Tape

Prod. Code	Size	Rolls/Pack	Rolls/Case	Wt. Lbs.
FTTCBT12	1/2"x 800'x 2 mil	24	144	6
FTTCBT01	1"x 800'x 2 mil	12	72	6



## Parafilm Grafting Tape

Prod. Code	Size	Rolls/Pack	Rolls/Case
FTPf1	1"x 90'x 2 mil	6	72



Call or go online for large quantity orders, additional info and current prices.

## Flagging Tape



SOLID	STRIPE	POLKA DOT	CHECKERBOARD
Black	Blue/White	Blue/White	Blue/White
Blue	Orange/White	Orange/White	Orange/White
Orange	Red/White	Red/White	Pink Glo/White
Red	Yellow/White	Yellow/White	Red/White
Yellow	Green/White	Green/White	Yellow/White
Green	Black/White	Black/White	White/Black
White	Blue/Black	Blue/Black	Blue/Black
Purple	Orange/Black	Yellow/Black	Green/Black
Pink	Yellow/Black	Red/Black	Red/Black
Blue Glo	Red/Black	Red/Yellow	Yellow/Black
Lime Glo	Red/Yellow	Pink Glo/Black	Pink Glo/ Black
Orange Glo	Pink Glo/Black	Orange Glo/Black	
Red Glo	Orange Glo/ Black		
Pink Glo	Green/Black		
Yellow Glo			

**Please Note:** To order use Prod. Code: FTA(Pattern)(Color)  
 Pattern = Solid-S, Stripe-ST, Polka Dot-PD, Checkerboard-CB  
 Color-Use First Letter of each color. Blue/White = BW  
 Black=BL Glo=G

**Example:** FTA**STBW** = FTA(Stripe)(Blue/White)

Available in 1-3/16" width, this multi-purpose tape has long-lasting qualities when exposed to extreme conditions. Many colors and patterns available: solid, striped, glo, polka dot and checkerboard. Priced per roll, 12 rolls per box. Weight: 4 lbs./box.

### 1-3/16" Width Tape

Color/Description	Length
Solid	300'
Glo	150'
Stripe	300'
Polka Dot	300'
Checks	300'



### 1/2" Width Tape

1/2" Tape Available in **SOLIDS** Only: 24 Rolls/Tube White (**W**), Yellow (**Y**), Red(**R**), Blue (**B**), Orange Glo (**OR**), Pink Glo (**PG**)

**Please Note:** To order use Prod. Code: FT12(Color)

**Example:** FT12**W**

Color/Description	Length
Solid	300'



## Flag Stakes



### Wire Flag Stakes

Flag Size: 4" x 5", Total Length: 30"

**Product Code:** FTFS\_

Sold in bundles of 100. Available in White, Yellow, Red, Blue, Green, Orange, Orange Glo and Pink Glo.

### Fiberglass Flag Stakes

Flag Size: 4" x 5", 18" Length

**Product Code:** FTFSF\_

Sold in bundles of 50. Blue, Green, Orange, and Pink Glo.

## Bird Scare Tape

**Product Code:** FTTBST

1" x 500' Silver. Metalized Polyester.  
 Warning: This tape conducts electricity.  
 Do not place near or around electrical wiring or utility lines.



## Max Tapeners, Blades, Staples



### HTR Tapener

**Product Code:** FTMAXHTR

Use with the smaller MAX tape or Miracle Garden Tie Tape. Opens to 2" wide.

### HTR-2 Tapener

**Product Code:** FTMAXHTR2

Holds larger rolls of MAX or Standard Tie Tape.



### Max Staples

**Product Code:** FTMAXS

Sold by the box. 4800 staples per box. 10 boxes per carton. 200 boxes per case. Wt: 2 ozs./box



## Tapener Blades

Prod. Code.	Description	Blades/Pack
FTMAXB	Max Brand Blades (for HTB)	3
FTMAXBS	Serrated Blade (for HTR)	2



## Grafting & Budding Knives

Product Code	Description	Weight
HT683	Tina budding knife, 1-3/4" stationary blade, 6-1/4" overall length.	2 oz.
HT685	Tina grafting knife, 2-1/4" stationary blade, 6-1/2" overall length.	2 oz.
HT605	Tina grafting knife, 2-1/2" folding blade, 4" handle.	2 oz.
HT606	Tina grafting knife, 2-1/4" folding blade, 4" handle.	2 oz.
HT641	Tina curved blade w/barklifter. 2" folding blade, 1/2", serrated thumb supporter, 4" handle.	2 oz.
HPGK	Jameson Grafting & Budding Knife. 1-1/2" surgical steel blade, 4-1/2" heavy rubber-coated handle.	2 oz.
HV39020	Victorinox #39-020 Rosebud Knife	2 oz.

## Doc Farwell's Tree Seal

\* Cannot be shipped in very cold weather

\* Do not allow product to freeze

### Grafting Seal\*

Thicker material is colored to reflect and absorb sunlight for maximum natural healing. Yellow compound is primarily used for grafting. It is also used for tree damage.

### Damage Seal & Heal\*

Green wound dressing. Colored to blend well with tree foliage. Preferred by orchardists and nurserymen.



Prod. Code.	Size	Description	Wt. Lb.
MSGSHQ	Quart	Seal & Heal*	3.0
MSGSHG	Gallon	Seal & Heal*	10.5
MSGSG	Gallon	Grafting Seal*	10.5



## Tree Kote

Protects shrubs, bushes, vines and trees from decay, insects and fungi. Patch damaged areas of trees & shrubs or apply to freshly pruned areas. Use to propagate orchids.

Prod. Code	Size	oz.	Wt. Lb.
MSGTK08	1/2 pint	8 oz	.5
MSGTK16	1 pt	16 oz	1.0
MSGTK32	1 qt. tub	32 oz	3.0
MSGTKG	1 gal. tub	128 oz	8.9

## Budding Strips

Width: 3/16" 

Width: 1/4" 

Width: 3/8" 

Due to the Natural Material of Budding Strips, the Manufacturer does not express or imply longevity of the Budding Strip. Store in a cool dry place.

Prod. Code	Length	Width	Thickness	Strips Per Lb.
MSBS4316010	4"	3/16"	.010	2,880
MSBS414016	4"	1/4"	.016	1,650
MSBS5316010	5"	3/16"	.010	2,250
MSBS514010	5"	1/4"	.010	2,131
MSBS514016	5"	1/4"	.016	1,200
MSBS5316016	5"	3/16"	.016	1,700
MSBS5316020	5"	3/16"	.020	1,400
MSBS514020	5"	1/4"	.020	950
MSBS6316020	6"	3/16"	.020	1,080
MSBS614010	6"	1/4"	.010	1,776
MSBS614016	6"	1/4"	.016	1,110
MSBS614020	6"	1/4"	.020	888
MSBS638020	6"	3/8"	.020	490
MSBS814016	8"	1/4"	.016	832
MSBS838020	8"	3/8"	.020	405

## Honing Oil

Washita Mountain honing oil. Time tested and proven over many years of use.

Prod. Code	Wt. Oz.
HSO3OZ	3



## Sharpening Stones

### Corona Sharpening Tool

- 5" super carbide file
- Ideal for sharpening all blades
- Easily fits in pocket
- No slip grip for easy use

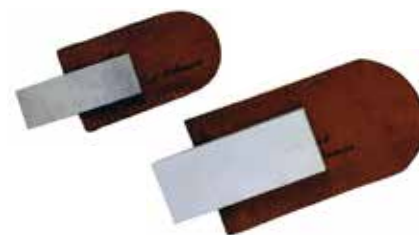
Prod. Code	Wt. Oz.
HCAC8300	1.8



### Hard & Soft Arkansas Stone

- The soft stone is the most rapid sharpening stone. It will produce the fastest edge on your knife.
- The hard stone is a fine grade. Best used for polishing an already sharp blade.
- Comes with a leather pouch.

Prod. Code	Size/Description	Wt. Oz.
HSSS	3 x 1 x 1/4" soft stone	3
HSLS	4 x 1-5/8 x 1/2" soft stone	6
HSSH	3 x 1 x 1/4" hard stone	3
HSLH	4 x 1-5/8 x 1/2" hard stone	6



### Bench Stone

Prod. Code	Size/Description	Wt. Oz.
HSB6	6" x 2" x 1" Bench stone	17.5
HSB8	8" x 2" x 1" Bench stone	23.6



Bench Stone

# Bamboo Cane Stakes

Top quality bamboo cane stakes from China are strong and uniform.

- 12" splits – 12' lengths.
- 1/4" through 1-1/2" diameters.
- Bundle quantities and weights may vary.



Natural



Green Dyed

## Natural

Size Ft.	Diam. Inches	Diam. MM	Wt. Lbs./Bundle	Qty./Bundle
2	5/16	6-8	30	1,000
2.5	3/8	8-10	30	500
3	3/8	8-10	35	500
4	3/8	8-10	45	500
4	7/16	10-12	35	250
4	1/2	12-14	45	250
5	3/8	8-10	60	500
5	7/16	10-12	35	250
5	1/2	12-14	50	250
5	5/8	15-17	35	100
6	1/2	12-14	50	200

Size Ft.	Diam. Inches	Diam. MM	Wt. Lbs./Bundle	Qty./Bundle
6	5/8	15-17	40	100
6	3/4	18-20	55	100
7	1/2	12-14	30	100
7	5/8	15-17	45	100
7	3/4	18-20	65	100
8	7/8	22-24	45	50
8	1	24-26	55	50
9	1	24-26	55	50
10	1	24-26	35	25
12	1-1/4	28-30	45	25
12	1-3/8	30-35	50	25

## Green Dyed

Dyed to blend in with plants; color is not a preservative.

Size Ft.	Diam. Inches	Diam. MM	Wt. Lbs./Bundle	Qty./Bundle
1.5	3/16	4-6	30	2,000
2	3/16	4-6	20	1,000
3	5/16	6-8	40	1,000

Size Ft.	Diam. Inches	Diam. MM	Wt. Lbs./Bundle	Qty./Bundle
4	3/8	8-10	45	500
5	7/16	10-12	35	250

## Bamboo "U" Trellis

Prod. Codes	Description	Wt./Lbs.
MSBUT01881N1C	18" "U" Natural (100 bn)	14
MSBUT0248110N1C	24" "U" Natural (100 bn)	19
MSBUT0301012N1C	30" "U" Natural (100 bn)	19
MSBUT0361012N1C	36" "U" Natural (100 bn)	20
MSBUT0421416N1C	42" "U" Natural (100 bn)	40
MSBUT0481416N1C	48" "U" Natural (100 bn)	44



## Bamboo Fan Trellis

Prod. Codes	Description	Wt./Lbs.
MSBFT18N50	18" Fan Natural (50 bn)	7
MSBFT24N50	24" Fan Natural (50 bn)	10
MSBFT36N50	36" Fan Natural (50 bn)	15
MSBFT48N50	48" Fan Natural (50 bn)	20



Call for a quote on fiberglass stakes







**Bahco PX-M2 Professional Pruning Shears**

3/4" cutting capacity. Fixed handle. Three spring tensions. Easy to adjust lockable center bolt – will not loosen while cutting.

Prod. Code

HBTPXM2



**Bahco PG Ergo Pruners**

Ergonomically designed. Xylan-coated head reduces friction for superior cutting. Three handle sizes available.

Prod. Code	Handle Size
HBTPGS2E	Small
HBTPGM2E	Medium
HBTPGL2E	Large



**Bahco P51-SL 23" Hedge Shear**

Prod. Code

HBTP51



**Bahco P128-19 Professional Snips**

7.5" steel blade. Long, fine cutting head with 1.36" opening. Glass-fiber reinforced plastic handles.

Prod. Code

HBTP12819

**okatsune**



**Okatsune 101 & 103 Pruning Shears**

These shears provide cutting performance unmatched by other brands. A unique locking/unlocking feature allows you to open and close the shears with one hand. Blade angle is key to clean cuts.

Prod. Code	Wt. Oz.
HO101	6.2
HO103	8



**Okatsune 207 Pine Needle Shears**

1-7/8" pointed blade. Ideal wherever precise control and very clean cuts are required. For bonsai, floral, propagation and thinning applications. 7-1/2" length.

Prod. Code	Wt. Oz.
HO207	3.8



**Okatsune 204 & 216 Shear**

6" blade with option of 18" handle on the 204 or 12" handle on the 216. Short blade hedge shears, great for tight quarters and limited movement.

Prod. Code	Wt. Lbs.
HO204	1.8
HO216	1.8

**Okatsune 306 & 307 Short Thinning Shear**

These shears feature a 1-3/8" pointed blade. The short blade provides for an overall stiffer shear. The added stiffness provides good tip strength and a slightly larger cutting capacity than the 304 model. 7-1/3" length.

Prod. Code		Wt. Lbs.
HO306	Round Tip	0.21
HO307	Pointed Tip	0.21



**Okatsune 205 & 217 Shear**

7" blade with option of 20" handle on the 205 or a 12" handle on the 217. Make trimming and shaping fast and easy

Prod. Code	Wt. Lbs.
HO205	1.25
HO217	1.25



**Okatsune 304 Pointed Thinning Shears**

These shears feature a 1-7/8" pointed blade. The long lasting sharpness makes this an excellent softwood propagation tool.

Prod. Code	Wt. Oz.
HO304	3.4





## ARS Tools

Since 1876, ARS Corporation has been defining the state of the art for pruning tools. The tools are sharp, engineered to hold their edge longer, lightweight, well-balanced, and durable. ARS tools are designed for continued professional use with minimal maintenance required, allowing you to spend your time focused on the task at hand rather than on your tools.

Prod. Code	Description
<b>Pruners and Scissors</b>	
HAHP300SS	Shortnose Pruner
HASS320BM	Angled Slim Scissor
HASS320BT	Straight Slim Scissor
HAHPSE65	Onion Scissor, Xtra long blade
HAHP130DX	General Purpose Hand Pruner
HAHPKKS4	Hand Pruner
HAHP120EU	Euro Hand Pruner
HAHP310	Curved Blade Pruner
HAHP300L	7" Needlenose Pruner
<b>Long Reach Pruners</b>	
HAHPVS92	Hand Pruner 9" long
HALA180L12	Heavy-Duty, Razor Edge 4' long reach pruner
HALA180L21	Heavy-Duty, Razor Edge 7' long reach pruner
HALA160ZR305	6'-10' Telescopic Pruner
HALA180ZR305	6'-10' Telescopic Pruner, Razor Edge
<b>Shears and Saws</b>	
HAHSCR1000	25.5" Hedge Shear
HASACAM24PRO	Fixed Saw Arborist 10" w/ sheath
HASAIK10R	Folding Bonsai Saw
HAKNFNGMRP	



Prod. Code	Description
HVA1	Bypass Pruning Shear
HVB2	2.5" Long Nose Shear
HVB3	7.5" Curved Blade Shear



Prod. Code	Description
HB3300	Barnel Bonsai, Garden & Floral Scissors
HB1330	7" Bypass Pruner (multiple color options)
HB200	8" Bypass Pruner
HB1000L	Barnel Bonsai, Garden & Floral Scissors
HB1100L	Barnel Bonsai, Garden & Floral Scissors



Call or go online for large quantity orders, additional info and current prices.

## Corona Shears & Pruners

Born in the California orange groves in the 1920s, Corona tools have been helping generations of agriculturists, gardeners, landscapers, arborists and construction professionals to achieve more, season after season. Our tools are built to last and designed specifically for the day-to-day needs of growers from all walks of life.

Prod. Code	Description	Wt. Lbs.
HCFS4310	Corona 5" Mini Shear	.35
HCFS4350	Corona 7-1/4" Thinning Shear	.5
HCBP3130	Corona 6-3/4" Bypass Pruner	.75
HCBP3160	Corona 8" Bypass Pruner	.5
HCBP3180	Corona 8-3/4" Bypass Pruner	.5
HCGS6750	12" Grass Shear	1.0
HCHS6930	Forged Hedge Shear 20" Handle	4.0
HCHS6960	Hedge Shear	1.0
HCHS6920	Shear	1.0
HCHS6250	Pruner	1.0



HCHS6930



HCHS6920



HCBP3130



HCFS4310



HCFS4350



HCBP3180



HCGS6750

## Corona Loppers & Saws

Prod. Code	Length and Description	Wt. Lbs.
HCWL6321	19" Professional Bypass Vine Lopper	2.0
HCWL6361	26" Professional Bypass Lopper	2.83
HCWL6481	36" Heavy Duty Bypass Lopper	6.0
HCAL8462	Heavy Duty Aluminum Lopper	2.0
HCPS4050	10 1/2" Folding Pruning Saw, 10" saw blade	.66
HCRS7120	Razor Pruning Saw, 13"	1.2
HCPS4040	Corona 4040 Folding Saw	1.2
HCRS7041	Razor Tooth Folding Saw, 7"	1.2
HCPS4050	Folding Saw, 10"	1.2



HCWL6481



HCWL6361



HCAL8462



HCPS4050

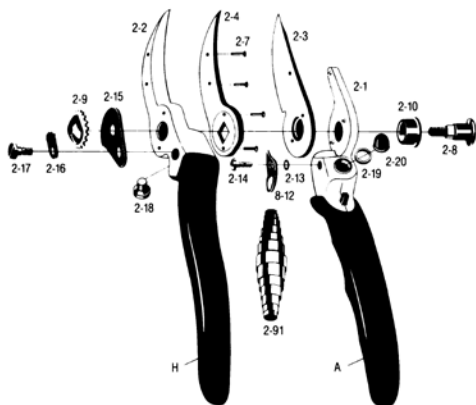


HCRS7041



Try a Felco pruner and know the joy. The tight, solid feel. The smooth, silky action. It's time to become a Felco Fanatic! Felco pruners will amaze you. Sharp, durable, sturdy, adjustable tools that are easy to repair and maintain. Felco garden tools are everything you need.

We are proud to sell the entire Felco line with all the spare parts and accessories.



## Felco 2

Our most popular pruner. Anvil blade with snap-groove, rubber cushion stop. Adjustable. All parts are replaceable.



Prod. Code:	Wt. Oz.
HF02	8.5

## Felco 4

Similar to the No. 2; same quality cutting blade. Blade adjustment is by the center bolt and nut only.



Prod. Code:	Wt. Oz.
HF04	10

## Felco 5

Similar to the No. 4, but with steel handles. Quality replaceable blade for excellent cutting.



Prod. Code:	Wt. Oz.
HF05	11.2

## Felco 6

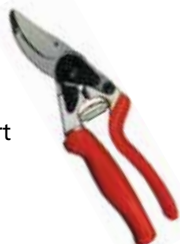
Short, narrow blades for cutting close to the stem. Perfect for small and medium hands and for ladies.



Prod. Code:	Wt. Oz.
HF06	7.6

## Felco 7

Rotating handle allows fingers to move naturally, with less effort and maximum comfort when pruning over prolonged periods of time.



Prod. Code:	Wt. Oz.
HF07	10.7

## Felco 2 Replacement Parts

Prod. Code:	Description
HF2-3	cutting blade
HF2-4	anvil blade with rivets
HF2-91	spring – 2 per pack
HF2-93	shock absorber – set of 4
HF2-8	center bolt
HF2-9	nut for center bolt
HF2-10	bushing
HF2-12	thumb catch
HF2-13	washer for thumb catch
HF2-14	screw for thumb catch
HF2-15	catch plate
HF2-16	locking segment
HF2-17	screw for locking segment
HF2-19	edging ring for shock absorber
HF2-35	red plastic coating/blade handle
HF2-36	red plastic coating/anvil handle
HF2-5	rivets

## Felco 8

Same features as No. 7, but without rotating handle. Blade is angled to be almost an extension of the forearm, therefore improving lever action and increasing cutting power.



Prod. Code:	Wt. Oz.
HF08	8.7

## Felco 9

A left handed shear, with features similar to the No. 8.



Prod. Code:	Wt. Oz.
HF09	8.7

## Felco 10

A left handed shear, with rotating handle and features similar to the No. 7.



Prod. Code:	Wt. Oz.
HF10	10.2

## Felco 11

Similar to the No. 2, the ergonomic hand-fitting design is superbly balanced.



Prod. Code:	Wt. Oz.
HF11	8.5

## Felco Loppers

Reliable. Efficient. Ergonomic.



### Forged Aluminum Handle

Item No.	Item Description	Cutting capacity
HF20	17" LOPPER	1.5"
HF22	33" LOPPER	2"



### Carbon Fibre Handles

Item No.	Item Description	Cutting capacity
HF200C60	24" LOPPER	1.5"
HF210C60	24" LOPPER W/CURVED HEAD	1.5"



### Aluminum Handles

Item No.	Item Description	Cutting capacity
HF200A60	24" LOPPER	1.5"
HF23 (#200A-50)	20" LOPPER	1.5"



## Felco 600 Folding Saw

Ergonomically designed handle for greater comfort. Cuts branches up to 4" in diameter.

Prod. Code	Wt. Oz.
HF600	5.5

## Felco 611 Pruning Saw/Sheath

Ergonomically designed handle for greater comfort. Cuts branches up to 9" in diameter. A sheath is included.

Prod. Code	Wt. Oz.
HF611	7.8



## Felco 13

Multi-purpose pruning shear with extra long handles. The extended length of the left handle allows for two handed use when cutting thick branches.



Prod. Code:	Wt. Oz.
HF13	15



## Clip-On Holster

All leather with metal clip.

Prod. Code
HFSCO

## Belt Holster

Leather, with holes for belt to slip through.

Prod. Code	Wt. Oz.
HFSB	2



## Belt/Clip-On Holster

Leather, with belt holes and a metal clip.

Prod. Code	Wt. Oz.
HFSBC	2



## Felco Lubricant Spray

Biodegradable, protects all types of metals from corrosion.

Prod. Code:	Wt. Oz.
HFF980	1.89



## F-990 Pruner Grease

A high quality grease that reduces wear and tear of moving parts. It is hydrophobic (repels water) and stable at temperatures between -11°F and +248°F. Provides optimum anticorrosion. Non-toxic.

Prod. Code:	Wt. Oz.
HF990	1.89





## Shovels

Prod. Code	Shovel Description	Lift	Blade Size	Handle Length	Wt. Lbs.
HTTA12582	Irrigating Shovel, Round Point (12582)	4"	7" x 9-1/2"	47"	4
HTTA12591	Irrigating Shovel, Used for B & B	4"	8-1/4" x 11 1/4"	47"	4.3
HTTA12597	Irrigating Shovel, Used for B & B	4-1/2"	9" x 11-1/2"	47"	4.3
HTTA12728	B & B shovel, Flat Dish, Clip Point	2-1/2"	8-7/8" x 10"	47"	4.2
HTTA12332	Drain spade, Turned Step	—	5-1/2" x 16"	47"	4.5
HTTA12311	Ditch/post spade, Turned Step, D Handle	—	5-1/2" x 16"	27"	4.5
HTTA15373	Caprock Irrigation Shovel w/ Fiberglass Handle	—	9" x 10"	48"	9
HTTA13095	Flat shovel, Square Point (44124)	—	9-3/4" x 11-1/2"	48"	4.5
HTTHANDLE2TK44	Tennessee Hickory Handle for B&B shovel	—	—	48"	1.5
HNFSH68449	Fiberglass Handle - Round	48"	1.5	—	—



## Steel Spades

Foot pads sold separately

Prod. Code	Wt. Lbs.	Description	Blade Length/Style
HWWDH12SB	6.71	26" D-Handle	12" Straight Bottom
HWWDH12DP	6.71	26" D-Handle	12" Diamond Point
HWWDH15DP	7.65	26" D-Handle	15" Diamond Point
HWWLH15SB	9.65	54" Long handle	15" Straight Bottom
HWWFOTPAD	.35	Rubber Foot pad	—

## Forged Head Garden Hoe

Prod. Code	Wt. Lbs	Size
HWW60GH	5.0	60" Wood



Call or go online for large quantity orders, additional info and current prices.



## Hoes

Prod. Code	Hoe Description	Blade Size	Pattern Handle	Wt. Lbs.
HTTA18411	Onion Hoe, Forged Shallow (66135)	7" x 1-3/4"	4-1/3" shank	1.9
HTTA18495	Nurseryman's Forged Taper Top (67127)	7" x 3-1/2"	4-1/3" socket	2.4
HTTA18663	Scuffle Dual Action Forged Taper Top (28663)	6" x 4"	4-1/2" sleeve	2.4

## Farm Tools

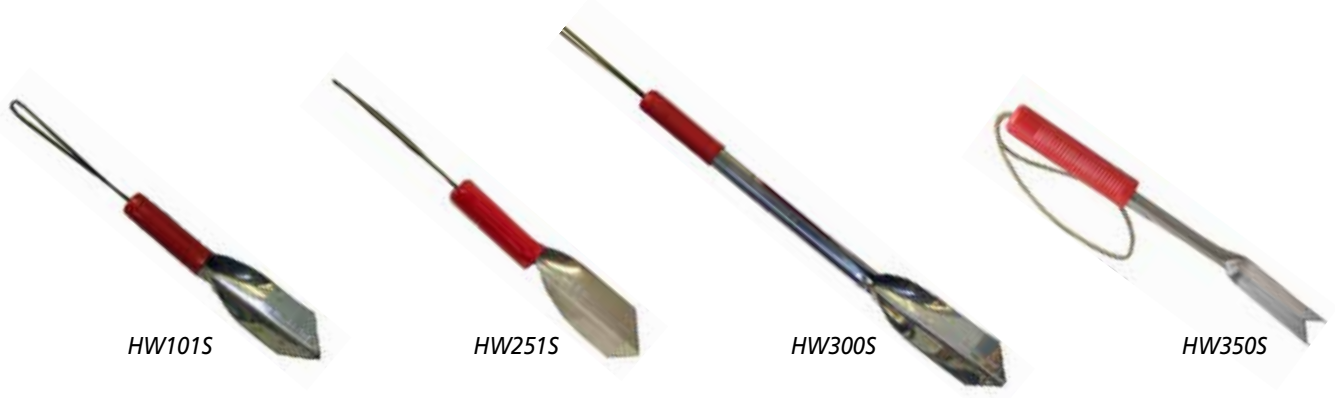
Prod. Code	Description	Blade Size	Wt. Lbs.
HTTA18046	Potato Hook, Southern Pattern Forged Steel Head/4 tines (75138)	7" x 8-1/2"	4
HTTA16341	Aluminum Scoop, long handle (79886)	11" x 13-1/2"	2.9
HTTA16814	Aluminum Scoop, "D" handle	15-3/4" x 20"	3.6
HTTA18233	Regular 5-tine manure fork Bent pattern (28265)	11-1/2" x 9 1/4"	3
HTTA18382	6- tine manure fork	12" x 10"	3



## Rakes

Prod. Code	Description	No. Tines	Width	Handle Lng.	Wt. Lbs.
HTTA1789000	Vinyl-coated aluminum handled rake with hanger end cap	25	18"	48"	2.3
HTTA1789300	Vinyl-coated aluminum handled rake with hanger end cap	11	8"	48"	2.3
HTTA19200	Uniform polypropelene tines retain their shape (64309)	26	24"	48"	2.3
HTTA18863	Bow Rake, one-piece forged	15	16-3/4"	60"	3.5
HTTA61036A	Aluminum landscape rake, non-gouging rounded teeth, plug at tip of handle (63000)	36	36"	66"	4.3
HTTA19046	Clog free lawn rake, special tines which prevent clogging	11	24"	48"	2.25
HTTA64430	Steel leaf rake	22	22"	48"	2.6





HW101S

HW251S

HW300S

HW350S

## Hand Tools Wilcox Tools

Prod. Code	Description	Wt. Oz.	Width	Length
HW101S	12" All-Pro Heavy-Duty Trowel	12	2"	12"
HW251S	11" All-Pro Stainless Trowel	12	3"	11"
HW300S	22" All-Pro Long Handled Trowel	19	3"	22"
HW350S	13" All-Pro Weeder	13	1"	13"



HTTA19838



HTTA19836



HTTA25008

## Ames/True Temper Tools

Prod. Code	Description	Ctn Qty	Wt. Lbs.
HTTA19838	Hand Weeder (19940)	12	3.6
HTTA19836	Hand Transplanter (19946)	12	6
HTTA25008	Planter's Pal 7-in-1 Tool (24421)	12	9.5

## Corona Tool

Prod. Code	Description
HCCT30101	Comfort Trowel



## Zenport Sickle and Saw

Prod. Code	Description
HZK206P	4.3" Serrated Sickle
HZK208P	6.5" Serrated Sickle
HZZL795K	14.5" Telescope Pruning Saw



HZK206P



HZK208P



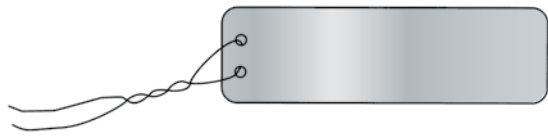
HZZL795K



# Impress-O-Tags

Simply write on **one or both sides** with a ball point pen, pencil, or other sharp object, to deboss (engrave) the tag. Large, 1"x 3-3/8" tags provide plenty of space for you to write on. Your message is **permanent** - it remains legible for years in any environment. The **durable** finish of these metal plant labels will not oxidize or rust, even with prolonged exposure to weather, most chemicals, heat, and dirt. Sturdy aluminum sheet is wrapped and glued around the core and permanently crimped in place, sealing the sides. The tag will not separate. 100 aluminum wire ties (measuring 4" doubled) are included in each box of metal tags.

Prod. Code	Size	Wt. Lbs./100
FLLIT	1" x 3"	0.5



## PID Permanent ID Labels

Numbered and can be imprinted with two lines of information as well. Ideal for those who require tamper proof identification of specific trees. Pre-numbered. White in stock. Other colors available upon request.

Prod. Code	Description	Qty./Bdl.	Wt. Bdl.
FLLPIDP	Custom Printed w/#print	100	1
FLLPID	Standard number print	100	1

## Galvanized Metal Sign Holders

With flanged edges so cards will not blow out. Other sizes available. 25 per box, sold per each.

Prod. Code	Size (WxLxH)	Wt. Lbs.
FLLYCH5418	5" x 4" x 18"	.60
FLLYCH7518	7" x 5" x 18"	.64
FLLYCH5430	5" x 4" x 30"	.76
FLLYCH7530	7" x 5" x 30"	.84
FLLYCH7550	5" x 7" x 30"	.84
FLLYCH14BA	Base adaptor 14g	1
FLLYCH16BA	Base adaptor 16g	1



## Yard Cards

These information cards can be used as "Silent Salesmen" to help sell your plants. These cards can be written on with a grease pen or permanent waterproof marking pen. The printed cards give all the basic information needed to identify your flowers, nursery stock or vegetables. 100 per bundle.

Prod. Code	Size /Description (HxW)	Wt. Lbs./100
FLLYC45	4" x 5" Blank	1.5
FLLYC45B	4" x 5" Botanical	1.5
FLLYC45F	4" x 5" Flower	1.5
FLLYC45V	4" x 5" Vegetable	1.5
FLLYC57	5" x 7" Blank	3.0
FLLYC57B	5" x 7" Botanical	3.0
FLLYC57F	5" x 7" Flower	3.0
FLLYC57S	5" x 7" Sale	3.0
FLLYC57V	5" x 7" Vegetable	3.0





## Push-On Tags

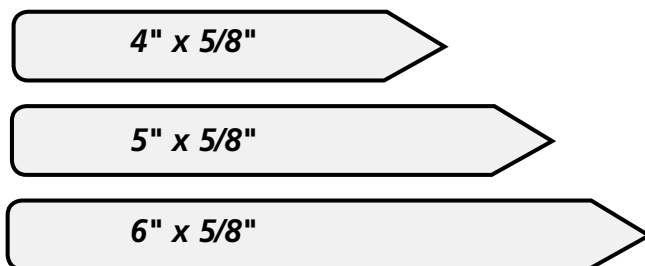
20 mil. styrene plastic. Blank push-on labels are used for labeling, color coding, and pricing your plants, trees and shrubs. Weight per 1,000 is 2.5 pounds. 100 per bundle, 1,000 per box.

Prod. Code.	Size	Color
FLLPOBL	1" x 3-3/4"	Blue
FLLPOGR	1" x 3-3/4"	Green
FLLPOOR	1" x 3-3/4"	Orange
FLLPOPI	1" x 3-3/4"	Pink
FLLPORE	1" x 3-3/4"	Red
FLLPOWH	1" x 3-3/4"	White
FLLPOYE	1" x 3-3/4"	Yellow
FLLPODBL	1" x 3-3/4"	Dark Blue

## Blank Bedding Pot Labels

20 mil. styrene plastic. All labels listed are blank. Used for pricing, color coding, and labeling your plants, trees and shrubs. 100 per bundle, 1000 per box.

Prod. Code.	Size /Description	Color	Wt. Lbs.
FLLS4WH	4" x 5/8"	White	1.75
FLLS5WH	5" x 5/8"	White	2.25
FLLS5BL	5" x 5/8"	Blue	2.25
FLLS5DBL	5" x 5/8"	Dark Blue	2.25
FLLS5GR	5" x 5/8"	Green	2.25
FLLS5LA	5" x 5/8"	Lavendar	2.25
FLLS5OR	5" x 5/8"	Orange	2.25
FLLS5PI	5" x 5/8"	Pink	2.25
FLLS5RE	5" x 5/8"	Red	2.25
FLLS5YE	5" x 5/8"	Yellow	2.25



## Field Stake

Prod. Code.	Size /Description	Color	Pack/Case Qty
FLLFS12WH	1.25" x 12"	White	100/1000

## Wooden Garden Labels

Unpainted. Sold in Quantities of 250/box and 1000/box.

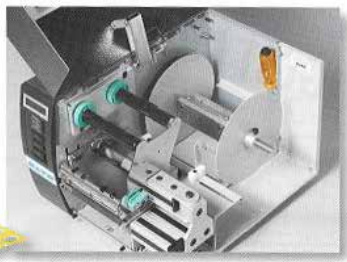
Prod. Code	Size /Description	Wt. Lbs.	Qty/cs
FLLW10250	1-1/8" x 10"	5	250
FLLW10	1-1/8" x 10"	21	1000



Call or go online for large quantity orders, additional info and current prices.

## TXPSX Thermal Printer

The TXPSX models contain the features that make them a best seller in the horticultural market. The ability to print tags up to 24 mil thick, 10" wide, with speeds up to 10" per second make them the ideal nursery printers.



Standard features include Parallel Port, Serial Port, Ribbon Save and a FETHR head (Floating edge type head revolution). The TXPSX printers are available with a 5" print head width.

This printer will print on pot labels, slip-on labels, pressure sensitive labels and yard cards. The rugged powdered-coated industrial strength steel case is designed for harsh environments, and is still attractive for office or store settings. Ribbon, program and labels sold separately. Please see our listings for labels. Call for additional sizes.

5" TXPSX5

## Taggit® Pro Labeling Design Software

Whether you need to print bar codes, text, graphic images, color pictures or from a database, Taggit Pro has the features to help you design and print tags and labels with ease. This program will grow with your needs: from entry level dot matrix printing to high speed thermal printing.

- Batch printing
- Full-featured database construction capabilities
- Utilize TrueType fonts, bar codes, preset formats for all OBC Northwest label and graphics capabilities
- Free phone support
- Includes plant database designed by Checkpoint with over 4500 records. This includes Annuals, Perennials, Trees and Broadleaf Shrubs, and is totally editable to add additional varieties or information.

## TSC Desktop Printer TTP-247 Series



- Prints up to 4.5" media width
- Up to 7" per second print speed
- Ribbon for printer is 984' long
- Labels for printer
  - Pot tag 1"x4.5" (ZX5141T)
  - Wrap around 3/4"x5" (TX10775)
  - 1"x10" (TT10014)
- Various Pressure Sensitive Labels

Prod. Code	Description
FLETP247PLUS	Printer with Bartender Software included
FLETP245SPINDLE	External Spindle
FLETPRIBBONWR	Wax/Resin Ribbon for TSC Printer
FLETP245-247CORE	Ribbon Core for Printer

## TXP-Series Printing Accessories

Prod. Code	Description
CALL FOR #	Replacement Coated Print Head, 4"
CALL FOR #	Replacement Coated Print Head, 5"
FLEFTXPSR604	4" Silver Foil (SR604)
FLEFTXPSR605	5" Silver Foil (SR605)
FLEFTXPSR654	4" Gold Foil (SR654)
FLEFTXPSR655	5" Gold Foil (SR655)
FLEFTXPSR904	4" All Purpose (SR904)
FLEFTXPSR905	5" All Purpose (SR905)

## Thermal Label Printing & Bar Code Printing

We can print your bar code labels or general plant tags at our factory according to your specifications. There is no long wait for engraving plates as in hot stamp printing. Labels are sold in full roll quantities only. Charges: there is an additional fee of \$1.50 for printing less than 1000 per variety. Call for a quote and lead time.



Thermal Pot Tags can be preprinted using the thermal transfer method. Thermal printing adheres to the surface for years, and will not fade away. The dry printing process means tags are ready to use as they come off the printer.

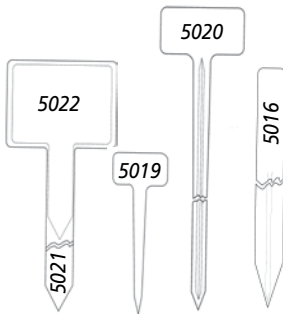
# Nursery Marking Pens

Prod. Code	Description	No. Per Box	Weight
FLLPJH	Garden Marker, Black, Fine point	20	1.5
FLLPL	Listo Grease Pencil, Black	12	.25
FLLPLL	Listo Grease Pencil Refill Leads, Black	72	.25
FLLPS	Sharpie Pen, Black, Fine point	12	.25
FLLPSXF	Sharpie Pen, Black, Extra Fine point	12	.25
FLLPGPXW	GPX Markers, White	12	.75
FLLPGPXB	GPX Markers, Black	12	.75
FLLPGPXY	GPX Markers, Yellow	12	.75
FLLPATP	ALL Flex Tag Pen*	1	.75

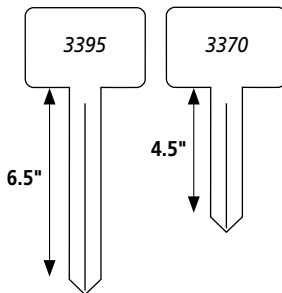


## Molded Pot Labels

Injection molded stakes are made of heavy duty styrene from .055 to .070 thickness.



Prod. Code	Face	Shank	Qty./Bdl.	Wt. Lbs./Bdl.
FLL5016	1" x 9.75"	N/A	100	3
FLL5019	1" x 2"	4"	100	1
FLL5020	1.25" x 2.5"	7"	100	2
FLL5021	2.75" x 4"	10"	50	3
FLL5022	2.75" x 4"	3.75"	50	2



## "T" Stakes

T-Stakes are produced from .030 white polystyrene for easy insertion into most soil.

Prod. Code	Size /Description	Total Height	Qty./Bdl.	Wt. Lbs.
FLLHS3370BWH	2-1/2" x 3-3/4"	7"	100	1
FLLHS3395BWH	2-1/2" x 3-3/4"	9"	100	1.5

## Pressure Sensitive (sticker) Labels

Long-lasting labels for outdoor application. Permanent adhesive backing. Ready for use on containers, flats, and most other smooth surfaces.

For additional information on UPC Bar Codes or to obtain your vendor code (first 5 digits of UPC number) or a membership application call: (937) 435-3870 write: Uniform Code Council, Inc., 7887 Washington Village Drive, Suite 300, Dayton, Ohio 45459 or email: info@uc-council.org.

Additional sizes may be available. Call for pricing.



Item No.	Size	Wide	Labels/Roll	Item No.	Size	Wide	Labels/Roll
FLTFT20102WH	2" x 1"	2	10,000	FLTFT17222WH	1-3/4" X 2-1/4"	2	4,000
FLTFT20052WH	1-7/8" x 9/16"	2	15,000	FLTFT17272WH	1-3/4" X 2-3/4"	2	4,000
FLTFT25372WH	2-1/4" x 3-7/16"	2	3,000	FLTFT20101WH	2" X 1"	1	5,000
FLTFT20202WH	2" x 2"	2	5,000	FLTFT25122WH	2-1/2" X 1-1/4"	2	8,000
FLTFT37251WH	3-5/8" x 2-3/8"	1	2,000	FLTFT30051WH	3" X 1/2"	1	9,000
FLTFT11183WH	1-3/16" x 1-3/16"	3	8,000	FLTFT30201WH	3" X 2"	1	15,000
FLTFT15101WH	1-1/2" x 1"	2	5,000	FLTFT37221WH	3-3/4X" X 2-1/4"	1	2,000
				FLTFT40051WH	4" X 1/2"	1	9,000

Call or go online for large quantity orders, additional info and current prices.



## All-Weather Paper

3" x 5" top spiral, all-weather notebook. Made with all-weather paper, resistant to moisture. Fits in pocket. 100 pages (50 sheets) per notebook.



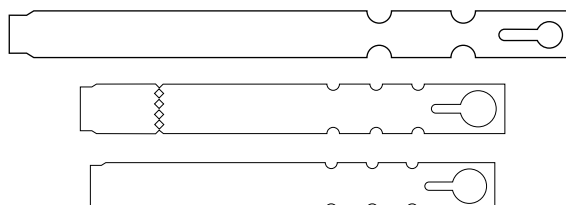
Prod. Code	Description	Prod. Code	Description
MSAWN935	Green Notebook	MSAWP97	Metal Barrel Pen
MSAWN935T	Tan Notebook		
MSAWCP8511	Copy Paper (200 sheets)		
MSAWCP9511	Green Copy Paper (200 sheets)		
MSAWN973T	8.5"x11" Side Spiral Notebook - Tan		



## Thermal Slip-on Labels

.010 material.

Colors Available: Green (GR), Lavender (LA), Lime (LI), Purple (PU), Blue (BL), Orange (OR), Pink (PI), Red (RE), Tan (TN), Turquoise (TU), White (WH), Yellow (YE).



Prod. Code.	Size	Color	Labels/Roll
FLTTX1055T__	1/2"x 5"	All Colors	4,000
FLTTX1055TWH	1/2"x 5"	Wht/Yel	4,000
FLTTX1075T__2M	1/2"x 7"	All Colors	2,000
FLTTX1075TWH2M	1/2"x 7"	Wht/Yel	2,000
FLTTX1076T__2M	5/8"x 7"	All Colors	2,000
FLTTX1076TWH2M	5/8"x 7"	Wht/Yel	2,000
FLTTX1077T__	3/4"x 7"	All Colors	2,000
FLTTX1077TWH	3/4"x 7"	Wht/Yel	2,000
FLTTX1071T__	1"x 7"	All Colors	2,000
FLTTX1071TWH	1"x 7"	Wht/Yel	2,000
FLTTX1097T__	3/4"x 9"	All Colors	2,000
FLTTX1097TWH	3/4"x 9"	Wht/Yel	2,000
FLTTX1091TWH	1"x 9"	White Only	2,000
FLTTX1091T__	1"x 9"	All Colors	2,000

The Thermal Slip-On tags are a great way of identifying your product. Once locked, it will stay on the plant material until removed. Thermal print adheres to the surface for years, and will not fade away. The dry printing process means tags are ready to use as they come off the printer. These Thermal Slip-On tags can be preprinted with the thermal transfer printing method.



## Thermal Pot Labels

PX=.024 poly / SX=.020 Styrene / ZX=.013 Styrene.

Colors Available: Lavender (LA), Orange (OR), Pink (PI), Red (RE), Turquoise (TU), White (WH), Yellow (YE), Lime (LI), Tan (TN).

Prod. Code.	Size	Color	Labels/Roll
FLTPX5156T__	9/16" x 5"	All Colors	2000
FLTPX5157T__	3/4" x 5"	All Colors	2000
FLTPX5151T__	1" x 5"	All Colors	1000
FLTPX5161T__	1" x 6"	All Colors	1000
FLTPX51567T__	3/4" x 6"	All Colors	2000
FLTZX5141TWH	1" x 4-1/2"	White Only	2000
FLTSX5157T__	3/4" x 5"	WH/YE	2000
FLTSX5156TWH	9/16" x 5"	White	2000
FLTSX5151T__	1" x 5"	All Colors	1000



## Brushing Shearing Knives

Lightweight, well-balanced knives manufactured in Germany. Highest possible quality stainless steel construction. Expertly ground and honed for optimal cutting life.



Prod. Code	Description	Weight
HXSK1610	10" handle, 16" blade	1 lb.
HXSK1618	18" handle, 16" blade	1
HXSKH-10	10" Shearing Knife Handle	
HXSKH-18	18" Shearing Knife Handle	

## Corona Sharpening Tool

5" super carbide file is ideal for sharpening all blades. No-slip grip for easy use. Fits easily into pockets.



Prod. Code	Wt. Oz.
HCAC8300	1.8

## Tally Meter

This metal plated, attached finger-ring tally meter meets U.S. Government Standards. Counts 0 to 9999 with easy-to-read white numbers on black background. One rotation of knurled knob resets to "0".



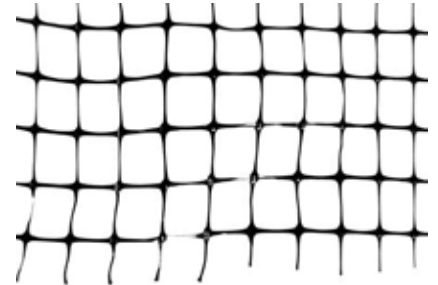
Prod. Code	Desc.	Wt. Ozs.
HXTM	Tally Meter	4

## Load/Bird Netting

Prod. Code: SCVOG1669144900

Lasts approximately 1 year. Master roll 4,500'.

Prod. Code	Color	Roll Size Ft.	Mesh Size	Wt. Lbs.
SCVOB75251201000	Black	10' x 1000'	3/4" x 5/8"	32
SCVOB7525120100	Black	10' x 100'	3/4" x 5/8"	3.2



## IRS Shearing Chap

Heavy-duty waterproof Cordura face and back, sandwiching five layers of Ballistic nylon. Single leg chap is fully adjustable. Three velcro straps allow for full leg tension adjustment.

These leg guards don't guarantee full protection of your legs when using a shearing knife.

Prod. Code	Wt. Lbs.
HXSC	2.25

## Trellis Netting

6" x 6" mesh trellis netting

Prod. Code	Piece Size	Description
SCTN6328	6.5' x 328'	Piece
SCTN63280	6.5' x 3280'	Roll





6072-1



9841



1441



8215



5458

Prod. Code	Description	Dial	Temperature Range	Wt. Oz.
GSTHERM6072	5" Stem Stainless Steel with pocket case	1"	0° to 220° F	2 oz.
GSTHERM5976	4" Steel Soil Test Thermometer	2-1/2"	20° to 160° F	2 oz.
GSTHERM9841	Digital Pocket Thermometer, easy-to-read digital display, 4" stem	1"	-58° to 500° F	2 oz.
GSTHERM1441	Digital Waterproof Max/Min Thermometer. 7 day memory, 2 sensors, indoor/outdoor	—	-20 to 120° F	9.8
GSTHERM8215	8" Stem, Watertight lens and recalibration nut	-1-3/4"	0 to 220° F	1.8
GSTHERM5458P	Max/Min T/R Magnet Reset			6. oz.



## pH Testers

Prod. Code	Description
MSHI70061G	Cleaning Solution 20 mL Sachet
MSHI70004P	pH 4.01 Solution 20ml Sachet
MSHI70007P	pH 7.01 Solution 20ml Sachet
MSHI50036P	Quick Calibration Solution for GROLINE 20 mL Sachet
MSHI70300-023	Electrode Storage Solution 230 ml Bottle
MSHI7004M	pH 4.01 Solution 250 mL Bottle
MSHI7007P	pH 7.01 Solution 250ml Bottle
MSHI7031M	1413 µS/CM EC Value 250 mL Bottle
MSHI70061M	Electrode Cleaning Solution 250 ml Bottle
MSHI70300L	Electrode Storage Solution 500 ml Bottle
MSHI10025	Shockproof Green Rubber Boot For GROPRO
MSHI98115	Entry Level GROLINE pH Tester Pen
MSHI98118	GROLINE pH Meter W/Case
MSHI98131	GROLINE Combo pH/EC/TDS/Temp. Tester
MSHI9814	QGROLINE Waterproof Combo pH/EC/TDS/Meter



98131

9814



GSPMMPRTC

## UL Listed Propagation Mats

Underwriters Laboratories Inc. (UL) is an independent product safety certification organization.

Daisy chain up to 5 units together (1 main mat plus 4 add on mats)

Rugged and durable with waterproof connectors you can daisy chain up to four mats together. This mat has a 6' power cord and provides constant optimum temperatures for specific crops.

Prod. Code	Description
GSPMMTMDU	60"x 21" Heat Mat (18W)
GSPMMTMDA	60"x 21" Modular Add-On
GSPMMPRTC	Heat Mat Controller (3 prong)
GSPMMT10009	48"x20" Seedling Mat

## Electronic Leaf

Prod. Code	Description
MSEL	Electronic Leaf



MSEL

Works on the principle of evaporation. The weight of the mist settles on the stainless steel screen which turns off the solenoid. When water evaporates the leaf rises and starts the cycle. (Solenoid valve not included)



Irrigation



Fertigation



Misting



Propagation



To see full product line visit  
[www.netafim.com](http://www.netafim.com)  
call OBC for a quote



# DRAMM



OBC Distributes an entire line of Dramm products.

To see a full line of products, visit [www.dramm.com](http://www.dramm.com)

**Save time and money with a full watering system**

## DRAMM AUTO FOGGER

MSDR\*LV\*

The Dramm Autofog automatically sprays areas up to 70,000 square feet with no applicator present. The ultra-fine cloud of droplets penetrates deep into the plant canopy covering all surfaces, ensuring excellent control of greenhouse pests and diseases.



## DRAMM BP-4LI BACKPACK SPRAYER 4 GAL

MSDRBP4-LI

The Dramm BP-4 Back Pack Sprayer is a rechargeable, battery powered, high-pressure sprayer that fits comfortably on your back.



## DRAMM HYDRA SPRAYER

MSDRH

The Dramm Hydra Sprayers are powerful yet easy to use. Size options available.



## DRAMM MSO SPRAYER

MSDRMS

Powerful and portable sprayer. Available in electric or gas. Adjustable pressure and flow rate.



## DRAMM PULSE FOGGERS

MSDR

The PulsFOG rapidly applies chemicals as a fog. The ultra-fine cloud of droplets penetrates deep into the plant canopy covering all surfaces, ensuring excellent control of greenhouse pests and diseases.



## DRAMM TURBO COLD FOGGER

MSDR

The PulsFOG Turbo Hybrid is an electrically powered, pneumatic cold-fogger. Its high-performance turbine creates a powerful, warm flow of air that atomizes and propels fog.



## Dramm Overhead Watering



### Misty-Mist Nozzles

Used for 360° overhead mist propagation, raising humidity levels, or for mist cooling. Use Blue/White (**MSDRMMBW**) or Red/White (**MSDRMMRW**) nozzles for propagation and humidity control. Use the high pressure Grey/White (**MSDRMMGW**) for cooling. Weight: 10oz. per 100.



### Dramm Nifty Nozzles

360° "overhead or on bench" watering. For on the bench watering (cut flowers), use \*BR (Brown), \*GR (Green) or \*GY (Grey) Nifty Nozzles. For overhead irrigation, use \*BL (Blue), \*RD (Red) or \*OR (Orange) Nifty Nozzles

**MSDR360NN\***



### Dramm Assembly Insert

**MSDRAI**

## Spot Spitters

Prod. Code	Description
<b>MSROBSS_</b>	<b>100/Bag variety of flow sprays</b>

Black – high flow, Brown – low flow, Blue – medium flow, Dark Green – medium flow, Grey – mini flow, Orange – mini flow



## Dramm Handi-Reach Handles

Made of hard-drawn aluminum with brass couplings, plastic grip.

Prod. Code	Length	Wt. Lb.
<b>MSDR148GB</b>	<b>48"</b>	<b>.83</b>
<b>MSDR148</b>	<b>48"</b>	<b>.83</b>
<b>MSDR136</b>	<b>36"</b>	<b>.66</b>
<b>MSDR130</b>	<b>30"</b>	<b>.66</b>
<b>MSDR124</b>	<b>24"</b>	<b>.42</b>
<b>MSDR116</b>	<b>16"</b>	<b>.33</b>
<b>MSDR430</b>	<b>30"</b>	<b>.92</b>

#430 comes complete with 30" wand, 400PL water breaker and #45C plastic shut-off.

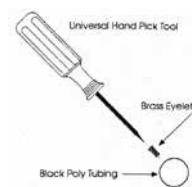
## Dramm Dribble-Rings

For nursery cans and large pots, tropical plantings, B&B stock, greenhouse tomatoes, orchids. A maximum of 400 containers can be watered with the Dribble Rings from a 3/4" supply pipe. Packed 100 per size, sold by the each. Rings listed by Product Codes. 2nd number denotes length of tube.



For 6" & 7" pot	For 8" & 10" pot	For 13" pot
<b>MSDRDR4-12</b>	<b>MSDRDR6-12</b>	<b>MSDRDR85-12</b>
<b>MSDRDR4-24</b>	<b>MSDRDR6-24</b>	<b>MSDRDR85-24</b>
<b>MSDRDR4-36</b>	<b>MSDRDR6-36</b>	<b>MSDRDR85-36</b>
<b>MSDRDR4-48</b>	<b>MSDRDR6-48</b>	<b>MSDRDR85-48</b>

For 16" pot	For 18" & Larger pots
<b>MSDRDR10-12</b>	<b>MSDRDR13-12</b>
<b>MSDRDR10-24</b>	<b>MSDRDR13-24</b>
<b>MSDRDR10-36</b>	<b>MSDRDR13-36</b>
<b>MSDRDR10-48</b>	<b>MSDRDR13-48</b>



## Brass Eyelets & Universal Hand Pick Tool

Prod. Code	Description	Weight
<b>MSDRDTMS-E</b>	<b>Eyelet for .060 &amp; .045 I.D.</b>	<b>70 oz. per 100</b>
<b>MSDRPT</b>	<b>Universal Hand Pick Tool</b>	<b>2.1 oz.</b>

**Note:** The outer Diameter (O.D.) of the green and brown tubes are exactly the same (only the inside Diameter (I.D.) is different - both sizes use the DTMS-E Eyelet.



## Fogg-It "Water Fog" Nozzles

Heavy-duty, solid brass jets deliver a super-soft mist that is ideal for greenhouse use, spraying delicate flowers, newly planted lawns or seed beds. Weight 6 oz.



Prod. Code	Description	GPM
MSFSSF	super superfine	1/4
MSFSF	superfine	1/2
MSFF	fine	1
MSFL	low volume	2
MSFH	heavy volume	4

## Fogg-It Pot Waterer

Attaches to standard garden hose. Chrome plated copper angled spout. Thumb valve designed for ergonomic comfort.

Prod Code	Size/Description	Wt. Lbs.
MSFTV	thumb valve	.5



## DRAMM



### 400 Water Breaker MSDR400

Cast aluminum with cast-in brass threads.



### 400PL Water Breaker MSDR400PL

Blue cyclac plastic with aluminum face disc.



### 170 Water Breaker MSDR170

All aluminum with brass coupling. Use when low pressure prevails. Great for 4" pots.



### 170PL Water Breaker MSDR170PL

Same as the 170 water breaker except it is made of unbreakable black cyclac plastic with aluminum face disc.



### 750 Lemonhead™ Water Breaker™ MSDR750PLC

Cyclac plastic, stainless steel. Protective rubber ring. Ultra soft with lower flow.



### 1000BP "Redhead" Water Breaker MSDR1000BP

Ultra soft flow for plugs, cuttings, and bonsai.



### Green Narrow Pattern Water Breaker MSDR1000PLN

Perfect for focused watering where more control is required.



### Orange Wide Pattern Water Breaker MSDR1000PLW

Throws a wider pattern than the standard Redhead, offering the ability to cover more area with a soft, gentle flow.



### 510 Seedling Nozzle MSDR510

Made of cadmium plated brass. Puts out an extra fine spray for seedlings.



### 540BC Brass Rose MSDR540B

Extra-wide spray pattern allows you to increase the speed of hand watering. Great for watering bedding plants, pots.



**300 Brass Shut-Off**  
**MSDR300**  
 3/4" Female hose threads. 3/4" Male hose threads.

**14700 One Touch Shut-Off Valve**  
**MSDR14700**  
 Offers precision fingertip control for all your watering needs. Medium flow.



**300ALC Aluminum Shut-Off**  
**MSDR300ALC**  
 3/4" Male to Female hose threads.

**74800 High Flyer Shut Off**  
**MSDR74800**  
 Much like the original Dramm OneTouch Valve, the NEW OneTouch HF will offer twice the flow rate with less than an ounce additional weight.



**235 Plastic Dual Shut-Off**  
**MSDR235**  
 Cylolac plastic dual shut-off. Female/Male hose threads.

**74C Polypropylene Shut-Off Valve**  
**MSDR74C**  
 Made with polypropylene to be very durable and corrosion resistant. More durable than other plastic valves. Lightweight and offers a full flow.



**65C Lever Activated Shut-Off**  
**MSDR65C**  
 Designed for quick and easy watering. Higher water flow than comparable triggers. Great with Dramm 170 Water Breaker Nozzle.

**Brass Swivel 3/4" Hose Thread**  
**MSDR72700**



**Dramm QVA Plastic Shut-Off Valve**  
**MSDR45**  
 QAV Shut-Off Valve The QAV Valve is designed as a high-quality, lower-cost valve. Made in the USA, the QAV uses a unique, patent-pending design to improve strength and quality while reducing assembly labor.

## Dramm Colorstorm Hoses & Accessories

Prod. Code	Description
MSDR17989	3/4" x 330' Bulk hose (spool)
MSDR17999	5/8" x 330' Bulk hose (spool)
MSDRDPFRAME	Crimper Frame only
MSDRDPJ*	3/4" Or 5/8" Jaws
MSDR178*	Fitting & Ferrule Sets, 5/8" Male, 5/8" Female, 3/4" Male, 3/4" Female
MSDR17003	5/8" x 50' Colorstorm hose
MSDR17203	5/8" x 75' Colorstorm hose
MSDR17303	5/8" x 100' Colorstorm hose
MSDR17313	3/4" x 100' Colorstorm hose



## Deluxe Fan Spray



Prod. Code	Desc.	Wt. Oz.
MSGI305	with shut-off valve	4

## Solid Brass Twist Nozzle



Prod. Code	Weight
MSGI528	8 oz.

## Solid Brass Stream Nozzle



Prod. Code	Weight
MSGI06BJ	4 oz.



## Hose Washers

Sold by the pack

Prod. Code	Desc.	Qty Per Pack
MSGI01RW	Rubber	16
MSGI02FW	Filter	3
MSGI01CW	Vinyl	10

## Hose Seal

Prod. Code	Desc.	Qty Per Pack
MSGI01ORS	Hose Seal	6

## Hose End Repair

For mending all standard 5/8" to 3/4" plastic or rubber garden hose.



Prod. Code	Desc.	Weight
MSGI01M	Male End	2 oz.
MSGI01F	Female End	2 oz.
MSGI01HM	Hose Repair Mender	2 oz.

## Plastic Quick Couplers



Prod. Code	Desc.	Weight
MSGI29Q	Male/Female	2 oz.
MSGI29QF	Female	2 oz.
MSGI39Q	Faucet M/F	2 oz.

## Brass Quick Couplers



Prod. Code	Desc.	Weight
MSGI09QC	Male/Female	4 oz.
MSGI09QCM	Male	3 oz.
MSGI09QCF	Female	3 oz.

## Gilmour Zinc "Y" Couplers



Prod. Code	Desc.	Weight
MSGI15	Zinc "Y" Connector	5 oz.

## Zinc, Single Shut-Off Valve



Prod. Code	Desc.	Weight
MSGI05V	Zinc single shut-off valve	5 oz.

## Gilmour Flexogen Water Hose

Prod. Code	I.D.	Length Ft.	Wt. Lbs.
MSG58025	5/8"	25	4.75
MSG58050	5/8"	50	6.25
MSG58075	5/8"	75	12.10
MSG58100	5/8"	100	16.00
MSG34025	3/4"	25	5.25
MSG34050	3/4"	50	10.00
MSG34075	3/4"	75	15.25
MSG34100	3/4"	100	22.00



# proptek FOR EARTHPOTS®



008SLED



072N10I



032510ID



015SLEM



098S20I

Item No.	Item Description
PPEPT008SLED	PROPTEK 008SLED SLEEVE FOR 100mm ELLEPOT (8/BNDL)(1152 PER PALLET)
PPEPT008SLETF	PROPTEK 008SLET-F 8 CELL TRAY W/ FEET 10"x 20" (144 PER PALLET)
PPEPT015SLEM	PROPTEK 015SLEM SLEEVE FOR 80mm ELLEPOT (2400 PER PALLET)
PPEPT015SLETF	PROPTEK 015SLET-F 15 CELL TRAY W/ FEET 12"X20" (160 PER PALLET)
PPEPT032	PROPTEK 032510IDF 32 CELL TRAY W/ FEET (160 PER PALLET)
PPEPT072N10I	PROPTEK 072N10I 72 COUNT TRAY FOR 35 X 40MM
PPEPT098S20I	PROPTEK 098S20I 98 COUNT TRAY FOR 30 X 100 MM





Prod. Code	Dimensions	Cu. in. / Plug	Tray Count
PPER1535	15mm x 32mm	0.64	288
PPER2035	20mm x 35mm	1.17	209
PPER2040	20mm x 40mm	1.34	162
PPER2035	20mm x 35mm	1.17	162 punchable
PPER2047	20mm x 47mm	1.53	162 deep
PPER2040	20mm x 40mm	1.34	144
PPER2340	23mm x 40mm	1.77	128
PPER2347	23mm x 47mm	2.2	128 deep
PPER2340	23mm x 40mm	1.77	105
PPER2340	23mm x 40mm	1.77	102
PPER2340	23mm x 40mm	1.77	102 strip
PPER2340	23mm x 40mm	1.77	2 x 51
PPER2340	23mm x 40mm	1.77	84
PPER3040	30mm x 40mm	3.02	78 strip
PPER3040	30mm x 40mm	3.02	3 x 26
PPER3040	30mm x 40mm	3.02	72 & 72 Proptek
PPER30100	30mm x 100mm	6.5	98 Proptek
PPER3540	35mm x 40mm	4.1	72 & 72 Proptek
PPER3560	35mm x 60mm	6.16	72 deep
PPER3545	35mm x 45mm	4.62	50
PPER4040	40mm x 40mm	5.4	50
PPER4047	40mm x 47mm	6.2	50 star deep
PPER4545	45mm x 45mm	7.64	32
PPER4560	45mm x 60mm	10.2	50 deep
PPER45110	45mm x 110mm	16	36 deep
PPER5070	50mm x 70mm	14	32 deep
PPER50100	50mm x 100mm	19.2	32X Deep & Proptek
PPER6070	60mm x 70mm	21	21
PPER7070	70mm x 70mm	28.7	18
PPER8070	80mm x 70mm	38	10
PPER80200	80mm x 200mm	98	15 Proptek
PPER9090	90mm x 90mm	61	15



Petunia



Walnut



Cilantro

## EARTHPOTS®

Made to order.

EARTHPOTS® are unique propagation plugs that retain vital air space needed for successful rooting. The fabric sleeve that surrounds the EARTHPOTS® is 100% degradable. The sleeve allows roots to easily grow through and air prune. EARTHPOTS® allow propagated plants to be easily removed from their trays and transplanted with no transplant shock. EARTHPOTS® save time and money in all steps of production - from propagation to finished product. Custom lengths and certified organic soils are available.



## Soil Amendments

### Perlite

A lightweight amendment for propagation and potting use. Improves aeration and drainage while retaining nutrients. Neutral pH, sterile. Choose from three grades:

- **Soil Mix** – Finest mix.
- **Propagation Mix** – more coarse than Soil Mix. Used in general propagation.
- **Horticultural Mix** – Course grade. Good for plugs.

Prod. Code	Description	Bag	Weight	Qty/Pallet
PMPISM	4 cu. ft. soil mix	plastic	35 Lbs.	36
PMPPG	4 cu. ft. propagation	plastic	35 Lbs.	36
PMPXLP	4 cu. ft. horticultural	plastic	21 Lbs.	33

### Vermiculite

Made up of granules of a unique lightweight mineral with countless cells or pockets that hold and release air and water as plants need them. Breaks up heaviest clay soil and enables sandy soil to hold moisture. Plants emerge from soil more readily and develop stronger roots.

Prod. Code	Description	Bag	Bag Wt. Lbs.	Qty/Pallet
PMV35	3.5 cu. ft. bag	woven polypropylene	40	30



### Peat Moss

Prod. Code	Description/Grade	Bag Wt. Lbs.	Qty/Pallet
PMPMGG38TH	3.8 cu. ft. Grower Grade	55	30



### Coco Fiber

Loose fill

Prod. Code	Description/Grade	Bag Wt. Lbs.	Qty/Pallet
PMOBCCF	2 cu. ft. bags	22	40

## OBC Northwest Soil Mixes

### Nursery Mix #1

Mix is to be used in 1 gallon or larger containers.

**Contains:** 70% fine bark, 20% mulch and 10% pumice.

Wetting agent added. 40 Bags per pallet.

Prod. Code	Description	Bag Wt. Lbs.	Qty/Pallet
PMOBCNM1	2 cu. ft. loose	40	40
PMOBCNM1BB	**60 cu. ft. bulk bags	1,200	1
PMOBCNM1BY	bulk yard (cost per yard plus freight)	—	Call for Quote

\*\* Note the 60 cu ft bulk bag equals 2.2 yards and will require a fork lift for Unloading.





# OBC Northwest Soil Mixes

## Seedling Mix #20

Contains: 60% fine peat, 35% Soil grade perlite and granular wetting agent.

Prod. Code	Description/Yield	Weight	Qty/Pallet
PMOBCSB20S	2 cy. ft. loose	35 Lbs.	40
PMOBCSB2088	(no sand) 3 cu. tote	900 Lbs.	1
PMOBCSB20BY	Bulk yard (*cost per yard plus freight)	Call for quote	

\*\* Note: Tote will require a fork lift for Unloading.



## Organic Potting Mix #17

Contains: 20% coir, 20% growers grade peat moss, 20% propagation grade perlite, 20% screened pumice, 20% aged Douglas Fir Bark, and Yucca wetting agent.

Prod. Code	Description/Yield	Bag Wt. Lbs.	Qty/Pallet
PMOBCSB17	2 cu. ft. bag	39	40
PMOBCSB17BB	2.5 cy. tote	1260	1
PMOBCSB17BY	Bulk yard (*cost per yard plus freight)	Call for quote	

\*\* Note: Tote will require a fork lift for Unloading.

## Bedding Plant Mix #2

Contains: 35% grower-grade peat moss, 32% mulch, 25% perlite and 8% vermiculite. Wetting agent added.

Prod. Code	Description/Yield	Bag Wt. Lbs.	Qty/Pallet
PMOBCBP2	3 cu. ft. (compressed into a 2 cu. ft. bag)	40	40
PMOBCBP2BB	60 cu. ft. bulk bags	1,200	1
PMOBCBP2BY	Bulk yard (*cost per yard plus freight)	Call for quote	

\*\* Note the 60 cu ft bulk bag equals 2.2 yards and will require a fork lift for Unloading.



## Hanging Basket Mix #9

Increased water-holding ability for baskets. Contains: 50% fine peat, 20% peat moss, 20% coir and 10% Perlite. Wetting agent and diatomaceous earth added.

Prod. Code	Description/Yield	Bag Wt. Lbs.	Qty/Pallet
PMOBCSB9	2 cu. ft. loose	38	40
PMOBCSB9BB	2.5 cy. tote	1,185	1
PMOBCSB9BY	Bulk yard (*cost per yard plus freight)	Call for quote	

\*\* Note: Tote will require a fork lift for Unloading.



## Greenhouse Mix #3

Contains: 45% mulch, 25% peat moss, 20% pumice, 5% vermiculite and 5% perlite. Wetting agent added. Free of weeds, disease and insects.

Prod. Code	Description/Yield	Bag Wt. Lbs.	Qty/Pallet
PMOBCGH3	2 cu. ft. loose	61	40
PMOBCGH3BB	**60 cu. ft. bulk bag	1,500	1
PMOBCGH3BY	Bulk yard (*cost per yard plus freight)	Call for quote	

\*\* Note the 60 cu ft bulk bag equals 2.2 yards and will require a fork lift for Unloading.



- Harrell's Polyon Fertilizers: Polyon homogenous technology releases nutrients evenly by osmosis. Polyon is not affected by media type, moisture level, pH, or microbial activity.
- 50lb bags
- 40 bags/pallet
- Sold by the bag

### Harrell's 14-14-14 NPK

- 4-5 months @ 70°F
- Item # FZA141414

### Harrell's 21-5-6 Super Iron Topdress

#### with Micronutrients

- 4-5 months @ 70°F
- Item # FZA2156

### Harrell's 15-6-12

#### with Micronutrients

- 10-11 months @ 70°F
- Item # FZA15-6-12

# JACK'S PROFESSIONAL®

## Water Soluble Fertilizers

- 25lb bags
- 84 bags/pallet

### General Purpose 20-20-20

- Item # FZP202020
- One of the most Versatile products in the Peters line. May be employed as a foliar spray.
- Maximum solubility: 3lbs 8 oz/gal

### Plant starter 9-45-15

- Item # FZP94515
- Ideal for all transplants. High phosphorus level stimulates rapid root growth.
- Maximum solubility: 2lbs 8oz/gal

---

## Tainio Biologicals, Inc – Natural Growing Through Biology

- BioDigester (50 grams) (1 acre)\*
- BioGenesis I + Polymers (454 grams) (1 acre)
- BioGenesis I Non-Polymer (454 grams) (1 acre)
- BioGenesis III – Seed Treatment (56 grams)\*
- Carbo II (454 grams) (2 acre)
- Micro 5000 (151 grams) (2 acre)\*
- Micro 5000 Organic (151 grams) (2 acre)\*
- MicroClear II (255 grams) (1 acre)
- MicroThatch (50 grams) (1 acre)
- MycoGenesis (454 grams) (1 acre)
- MycoGenesis Seed Treatment (160 grams)\*
- NutraNeed (64oz) (5 acre)
- Pepzyme C (64oz) (5 acre)
- Pepzyme G (64oz) (5 acre)
- Pepzyme M (64oz) (5 acre)
- PZ 1000 (151 grams) (2 acre)\*
- RhizoGenesis Root Dip (454 grams) (1 acre)
- Spectrum (50 grams) (1 acre)\*
- Spectrum DS (50 grams) (1 acre)\*
- Spectrum + Myco (155 grams) (1 acre)\*
- Spectrum PSB (75 grams) (1 acre)\*

(\*Minimum orders may apply)  
Available in larger acreage applications



by Marion Ag Service, Inc.

### Certified Organic OMRI, CDFA, WSDA

- Alfalfa Meal 2.5-0-2.5
- Blood Meal 13-0-0
- Bone Meal 3-15-0
- Crustacean Meal 4-0-0
- Feather Meal 12-0-0
- Fishbone Meal 4-17-0
- Fish Meal 9-4.5-0
- Greensand
- Kelp Meal 2-0-4
- Pelletized Lime
- Pelletized Dolomite
- Pelletized Gypsum

### Certified Organic WSDA

- Bone Meal 6-12-0
- All Purpose 8-2-5
- Micronized Crustacean Meal 4-0-0
- Micronized Fishbone Meal 4-17-0
- Micronized Kelp Meal 2-0-4
- Mag Kick
- Intrepid Trio 0-0-22

Call or go online for large quantity orders, additional info and current prices.

## Hormex #1 Rooting Compound

Use Hormex #1 for easy-to-propagate plants such as common shrubs and greenhouse plants.

Prod. Code	Wt. Per Box	Boxes/Case
CHHX1	1 lb.	12



## Hormex #3 Rooting Compound

Use Hormex #3 for rooting woody and semi-woody plants and easy-to-propagate evergreens.

Prod. Code	Wt. Per Box	Boxes/Case
CHHX3	1 lb.	12



## Hormex #8 Rooting Compound

For rooting difficult to propagate plants such as evergreens and dormant leafless cuttings.

Prod. Code	Wt. Per Box	Boxes/Case
CHHX8	1 lb.	12



## Hormex #16 Rooting Compound

For difficult varieties.

Prod. Code	Wt. Per Box	Boxes/Case
CHHX16	1 lb.	12



## Dip' N Grow

Prod. Code	Size	Wt.
CHDG2OZ	2 oz.	2 oz.
CHDGP	16 oz.	16 oz.
CHDGG	1 gallon	1 gallon



## Woods Rooting Compound

A special concentrated liquid formulation that offers the commercial grower a safe, effective and economical way to take advantage of rooting stimulants.

Prod. Code	Size	Wt.	Case Amount
CHW4OZ	4 oz.	4 oz.	24
CHWP	PINT	16 oz.	12
CHWG	Gallon	8 lb.	2

## Sticky — Yellow Insect Traps

Sticky Strips are bright yellow plastic sheets, coated on two sides with a specially formulated sticky goo. Hang them or fasten them in place, peel off the protective coverings and they'll catch insects until they are covered with insects or debris. Many insects are attracted to the color yellow: Aphids, Fungus gnats, Whiteflies, Leafminers, Carrot rust flies, Thrips and many others. They are inexpensive and disposable, 3" by 5".



Prod. Code	Wt. Per Box	Boxes/Case
CHSSYE	1 lb. 12 oz.	10

## Sticky Strip Rolls

Prod. Code	Size	Color
CHSSR10065B	100' x 6.5"	Blue
CHSSR5306	530' x 6"	Yellow



Sticky strip roll for thrips.



Bright yellow plastic sheets, coated on two sides with a specially formulated sticky goo. Color attracts many insects including: aphids, fungus gnats, whiteflies, leafminers, carrot rust flies, thrips and many others.

## Warren's T-7II Spreader

Warren's T-7II weighs less than 6 pounds when empty and holds up to 20 pounds of seed, herbicide or fertilizer. Tough, high-impact polyethylene and stainless steel construction provides trouble-free operation with minimum care.



Precision flow rate control is fully adjustable during operation so you can tailor application to fit the toughest jobs.

Prod. Code	Wt. Lbs.
<b>HMSPW</b>	<b>6.0</b>

## Perfect-A-Feed

5-quart dispenser or 25 pound capacity backpack dispenser. Fast, easy measured operation. Unit includes 1 teaspoon and 1 tablespoon drum.



MSMPFCH

Other measuring drum sizes available: 1/8 teaspoon, 1/3 teaspoon, 2/3 tablespoon

Prod. Code.	Description	Weight
<b>MSMPFCH</b>	<b>5 qt. capacity</b>	<b>3 Lbs.</b>

## E-Z Feeder

Use dry or free-flowing material.

- Fast – 2,275 feedings per hour
- Versatile, accurate and economical
- Will not fracture pellets
- Corrosion resistant and easily cleaned
- Lightweight



Prod. Code	Weight	Feed Measure Tsp.
<b>MSMEZFC</b>	<b>2lbs., 4 oz.</b>	<b>1-1/2 to 7-1/2</b>
<b>MSMEZFA</b>	<b>2lbs., 4 oz.</b>	<b>1/2 to 4</b>
<b>MSMEZFMM*</b>	<b>2lbs., 4 oz.</b>	<b>1/12 to 1</b>

\* not recommended for fertilizer

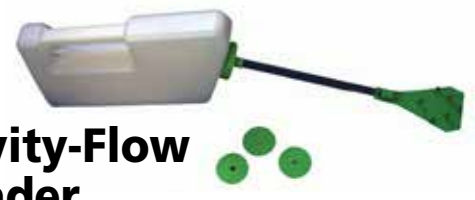


## Dramm Syphonject

The Dramm Syphonject is a convenient device capable of diluting concentrated, water soluble plant food or chemicals through your garden hose. Syphonject draws up concentrated solution through a small suction tube and dilutes it at the rate of 16:1 into the passing water stream inside the housing. 3/4" male & female hose threads.

Product Code	Qty/Case	Weight
<b>MSMS</b>	<b>12</b>	<b>8 oz.</b>

## Acme Gravity-Flow Type Spreader



Spread granular herbicides, fungicides, insecticides, and fertilizers.

- Adjustable swath width from 2 inches to 3 feet
- Flow rate is easily varied by changing walking speed; by adjusting swath width; by changing the disk size
- Three sizes of disks are supplied
- No metal parts to corrode or rust

Prod. Code	Empty Weight	Full Weight
<b>HMSPC</b>	<b>6 oz.</b>	<b>2 lbs.</b>

## Fertil Dispenser

The Fertil Dispenser Granular Top Dresser is ideal for top dressing containerized plants and in-ground trees and shrubs. Fast, accurate and efficient; will fertilize up to 1500 plants an hour and apply 2 to 25 grams per dose. Holds up to 20 quarts. Includes strap pads, spreading paddle for larger target areas and a dispenser head cover for wet conditions.



Product Code	Weight
<b>HMSFT</b>	<b>6.8 Lbs.</b>

Non-Electric Proportional Fertilizer Injectors. The results: an accurate and uniform feeding of fertilizers, fungicides, acids and more in your irrigation water. Dosatron fertilizer injectors are of use to greenhouse growers, nurserymen, landscapers, vegetable growers. Irrigate with: sprinklers, drip trickle, microjet, mist or fog, tape, etc.

## Li'l Bud-D DosaCart

**Prod. Code MSDLBD (for 11 and 14 GPM)**

- Polyethylene construction
- 5-gallon bucket
- 10" no flat tires for maximum mobility
- Dimensions: 44.5" high, 19" wide (wheel to wheel), and 22" deep
- Dosatron injector and cart hook up, kit sold separately



## Dos-A-Cart

**Prod. Code MSDDC (for 11, 14, 20 and 40 GPM)**

15 gallon, transparent polyethylene tank. Crash bar to protect unit from damage. 10" specialty tires. Drain valve at bottom for easy clean-up. Weight: 42 lbs. Dosatron injector and cart hook up, kit sold separately. No hook up kit available for 40 GPM.



## Plumbing Kit

Includes everything you need for a quick and easy installation onto the Dosatron Dos-A-Cart. Includes filter, check valve, elbows, clamps, hose, straps and teflon tape. Weight: 5 lbs. Dosatron unit and cart sold separately.

- MSDPHSPK58 For 11 & 14 GPM  
To be used with the Dos-A-Cart
- MSDPHSPKD45 For 20 GPM  
To be used with the Dos-A-Cart
- MSDPHSPK58LB For 11 & 14 GPM  
To be used with the For Li'l Bud



No hook up kit available for 40 GPM unit. Recommend using a 200 mesh prefilter in the coming year.

## Dosatron Filters\*

200 mesh (80 micron) filters are recommended by Dosatron. Kits available. Sold separately.

- MSDF14 14 gallon
- MSDF20 20 gallon
- MSDF40 40 gallon
- MSDF100 100 gallon

\* Units used without a filter, voids warranty



## Dosatron Check Valves

Protection from backflow or water hammer.

- MSDCV34 3/4" for 14 gpm
- MSDCV100 1" for 20 gpm
- MSDCV112 1-1/2" for 40 gpm
- MSDCV2 2" for 100 gpm



## 11 GPM – D25F1VFII

**Prod. Code MSD11F**

11GPM Fixed rate of 1:100. Designed for poor water quality due to sugar, sand, iron or hard water. Easy to install and maintain. Bypass, mounting bracket, suction tube, strainer and weight is included. Weight: 5 lbs.



## 14 GPM — D14MZ2VFII

**Prod. Code MSD14**

Higher flow rate (14 GPM vs. 11 GPM). Simplified motor piston has only 17 parts (vs. 52 parts in the previous unit). Chemical-resistant housing, easy-to-read ratio selector and accurate fertilizer injection. No tools required for easy, stress-free maintenance. Weight 6 lbs. Flow is .05-14 GPM, Ratio range 1:500–1:50



## 20 GPM — D45RE15VFII

**Prod. Code MSD20**

Non-electric proportional dispenser. Flow rates of 0.5 to 20 gallons per minute; injection ranges from 0.2% to 1.5%. Ratio range 1:500–1:66 External injection available for aggressive liquids. Weight: 8 lbs.

- Built-in Bypass
- Technologically advanced motor design
- Externally adj. injection stem



## 40 GPM — D8RE2VFII

**Prod. Code MSD408R**

The NEW D8R - 40 GPM fertilizer injector was designed using new technology and innovation, making it the *must have* fertilizer injector. Has a polypropylene housing and can easily inject fertilizers, pesticides, and caustic chemicals accurately with a flow rate of 2.2 to 40 GPM, an injection ratio of 1:500 – 1:50, and a pressure range of 2 to 110 psi.

- Improved chemical resistant housing
- Enhanced UV resistance
- Allows injection of corrosive chemicals
- Easy-to-adjust injection rates
- Built-in filter and anti-siphon valve



Includes: mounting bracket, suction hose, weighted strainer, and operating manual. Optional bypass available.

## 100 GPM — DS20SVFII

**Prod. Code MSD100**

The largest of the Dosatron Injectors. Its hardness is equaled only by its precision. It can be manifolded for larger flow rates or be used on a by-pass system. It can also be mounted in a series. Externally adjustable ratios from 1:500 to 1:50. Side injection and built-in mixing chamber. Operates at low-flow and low-pressure. Weight 47 lbs.

- By-pass
- Portable
- Anti-siphon valve
- Pressure range 2 to 120 psi





## Solo Back Pack Sprayer 475

**Prod. Code: HMSS475**

Diaphragm Pump. Minimum maintenance, large spraying capacity, even liquid distribution with low energy expenditure and low weight due to top quality UV plastics. 4 gallon capacity.

Weight: 11lbs.

## Safety Goggles/Glasses

**Prod. Code: MSMGOGGLES**



### Goggles Feature:

- Wrap-around lens - offers wide angle of vision.
- Vertical vent system - promotes air circulation over lens surface. Helps prevent fogging.
- Wide back opening - allows goggles to fit easily over large safety glasses.
- The wide nasal flare angle - allows the goggles to be worn with most half-mask respirators.



### Safety Glasses:

**Prod. Code: MSMGS**

Polycarbonate lenses, large, protective side shields and brow guard. Handsome, aviator styling that almost guarantees your employees will want to wear them. Eye protection when working with wood, machinery, etc.



## Kleen Guard GP Coveralls

The fabric breathes like cloth. Use in general applications. Offers effective protection against many particles and water-based liquids. White with elastic wrists and ankles. Attached hood.

**Sizes:** Medium, Large, X-Large, XXL, XXXL

Prod. Code	Description	No. Per Case
MSMCO_ _	coveralls	24
MSMCOXXXL	coveralls	20

## Gopher & Mole Traps

Prod. Code	Description
MSTC601	Gopher Trap
MSTC603	Mole Trap



## Water Shed Nitrile Rain Wear

Top-of-the-line rain wear, considered by many to be the most comfortable, lightweight and durable rain wear available. Material: Nitrile coating, laminated to 200 denier nylon. Construction: Raglan sleeve jacket with fleece collar and storm flap. Bib overalls with heavy-duty suspenders. Nylon hardware is non-conductive, rust proof and spark proof. Sealed, double stitched lap seams for extra strength.

Colors: Yellow (Y), Blue (B), Forest Green (G)  
 Sizes: Small through XXX-Large



Prod. Code/Size/Color	Description
MSRGWJ_ _	30" jacket
MSRGWP_ _	bib overalls
MSRGWH_	snap-on hood
MSRGW_XXL_	XXL
MRSRGW_XXXL_	XXXL

## Rip Stop Rain Gear

### 3-Piece Set

Jacket, Hood & Bib-Overall Pants

Small (S), Medium (M), Large (L),  
 X-Large (XL), Green



Prod. Code	Description
MSRGRS	3-piece set

## Neoprene Gloves

Prod. Code	Description
MSMGLN_	Sizes S-M-L-XL



## Nitrile Disposable

Prod. Code	Description
MSMGLND_	Sizes S-M-L-XL



## Gold Gripper Gloves

Prod. Code	Description
MSMGLGG_	Sizes S-M-L-XL



## Protective Gloves

### Atlas 370 Nitrile Glove

- Tough nitrile coating, with breathable, nylon liner
- Machine washable
- Small & Medium: in colored
- Small, Medium & Large: Black
- Sold n pairs or 12 per pack

Prod. Code	Description
MSMGLAN_	Atlas 370 Nitrile (black)
MSMGLANG_	Garden Atlas 370 Nitrile (colored)



## Atlas Rubber Gloves

Breathable knit back, rubber palm and fingers provide excellent fit and comfort. Good for transplanting. Available in blue (unlined) or gray (lined). Sizes S - M - L - XL.

Prod. Code	Description
MSMGLBR_ _	Blue, Rubber Unlined Glove
MSMGLBRL_	Gray, Thermafit Rubber Lined Gloves



## Cowhide Drivers Glove

Full grain cowhide. With or without strap.  
 Sizes M - L.

Prod. Code	Description
MSMGLD_	No strap



## Jersey Gloves

Prod. Code	Description
MSMGLBJ	Brown Jersey Gloves





## KPC48 Push Cart

The Push Cart from King.

- Dimensions: 24" x 48" x 17"
- Expanded metal deck
- Powder coated finish
- Rear wheels turn and swivel in all directions
- Tube tires
- Weight capacity: 1,000 lbs.

Prod. Code	Description	Weight
HKCKPC48	Push Cart	83
HKCKPC48D	Top Deck	N/A



## KRW Nursery Wagon

The KRW nursery wagon is available in three sizes.

- Weight capacity: 500 lbs.
- 4.10 x 4, 2-ply tubeless tires (KRW36 / KRW48)
- 4.8 x 8-16 tires (KRW72)
- 36" handle

Prod. Code	Description	Weight
HKCKRW36	KRW 21" x 36" wagon	70
HKCKRW48	KRW 22" x 48" wagon	94
HKCKRW72	KRW 36" x 72" wagon	140
HKCKDT10	KDT 10' Dump Trailer	450



## KC-60 Nursery Cart

Versatile cart with expanded metal deck.

- Size: 25" x 60" I.D.
- Weight capacity: 500 lbs.
- 4.8 x 8-16 tires
- Available with or without foot
- Support foot-handle operated

Prod. Code	Description	Weight
HKCKC60F	KC-60 with foot	95
HKCKC60	KC-60 without foot	95



## KT-H10 Tracking Trailer

Heavy-duty tracking trailer with automotive type 4-wheel steering. This trailer offers greater stability than 5th-wheel type axles.

- Size: 4' x 10'
- Rated at 2000 pounds
- 18 x 8.5 x 8 turf tires
- Hubs and roller bearings
- Comes with 3/4" plywood deck;
- Special order expanded metal deck
- Upper deck available, 2" angle iron with plywood or expanded metal deck. 21" or 24" from bottom deck.

Prod. Code	Description	Weight
HKCKTH10	Trailer w/ wood deck	450
HKCKTH10EX	Trailer w/ exp. mtl. deck	450
HKCWDECK	Upper deck w/wood	110
HKCSDECK	Upper deck w/ exp. mtl.	110



# OBC Northwest Inc. is your Greenhouse Specialist!



- OBC Northwest Inc. provides full service for your greenhouse construction needs.
- We evaluate your requirements and work with you to find the best possible solutions.
- Many styles from various manufacturers; from gutter connected ranges with hard or soft coverings, retractable roof, retractable heat/shade systems and cold frames. Let us build your greenhouse for you!

Oregon Contractors No. 127055 • Washington Contractors No. OBCNO1\*022CR

**New 30' engineered greenhouse available.  
Call for more information.**

OBC Northwest offers a full range of Greenhouse Construction Services

- **Semi-Gable**  
24', 30', 35' wide
- **Semi-Quonset**  
20', 24', 30', 35' wide
- **Quonset Overwintering Cold Frames**

**Customized To Your Needs!**

OBC uses the highest quality galvanized steel pipe in the construction of all our greenhouses. High quality mechanical steel provides extra resistance to rust and corrosion – inside and out! Easy to follow installation instructions. Hardware parts are included. Lumber for end framing and side boards are supplied by customer.



**30' Semi-Gable Greenhouse Frame**

The Semi-Gable Greenhouse is designed as a multi-use greenhouse for hanging baskets, flowers and nursery stock.

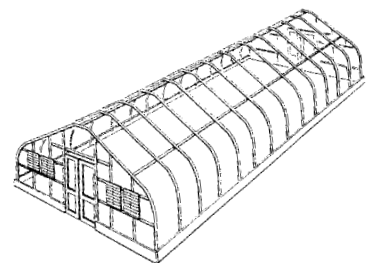
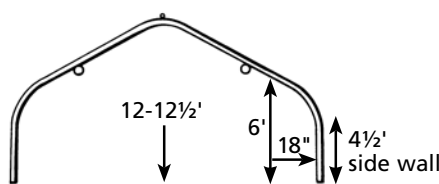
- Mechanical galvanized carbon steel pipe
- Two-piece bows are secured with 1-5/8" sleeve
- Built-in 4.5 ft. sidewall
- 3 rows of 1-3/8" x 16 gauge purlins
- Legs are 2-3/8" x 16 or heavier gauge pipe



30' wide Semi-Gable available in 2-3/8" diameter bows with 2-7/8" legs.

**To Cover a 30' wide Semi-Gable Greenhouse**

- 48' wide poly covers ground to ground
- 44' wide shade cloth covers ground to ground
- 40' wide shade cloth or poly covers this house if attached at the 4' side boards.



**Greenhouses manufactured by OBC Northwest are non-coded structures and OBC does not express or imply that they meet any Uniform Building Codes**

**Oregon Contractors No. 127055**  
**Washington Contractors No. OBCNO1\*022CR**

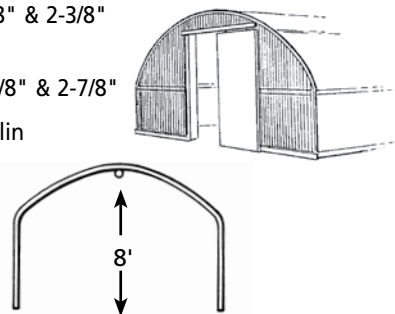
# Customized To Your Needs!

## Low Profile 20' wide Semi-Quonset Greenhouse Frame



Commonly used as a propagation house.

- 1-3/8", 1-5/8", 1-7/8" & 2-3/8" steel pipe
- legs are 1-5/8", 2-3/8" & 2-7/8"
- 1 run of 1-3/8" purlin
- mechanical galvani carbon steel pipe

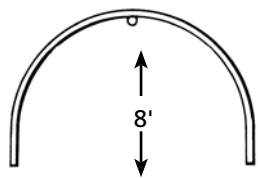


### To cover a 20' wide Low Profile Semi-Quonset Greenhouse

- 32' wide poly covers house ground to ground
- 30' wide shade cloth covers ground to ground
- 24' wide shade cloth or poly covers this type house when attached at the 4' side boards

### 15' QUONSET

- 1-3-8" 16 Ga. and 1-5/8" 15 Ga. bows spaced 4', 5' or 6' o/c
- 1-5/8" or 1-7/8" 15 Ga. legs
- One run 1-3/8" purlin and four corner wind braces.
- 28' wide poly covers this house ground to ground allowing for inflation.
- 24' wide shade cloth taped and grommetted covers ground to ground over single layer poly.
- 26' wide shade cloth covers inflated poly mounted ground to ground.

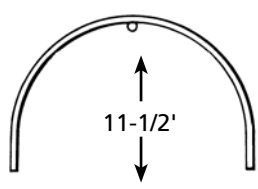


## Wintering Over Greenhouse 15' or 30' wide Quonset House Frame



### 30' QUONSET

- 1-7/8" 15 Ga. or 13 Ga. bows spaced 4', 5' or 6' o/c
- 2-3/8 16 Ga. or 13 Ga. legs
- Three runs of 1-3/8" purlin and 4 corner wind braces.
- 48' wide poly covers this frame ground to ground.
- 44' shade covers inflated poly ground to ground.



**Greenhouses manufactured by OBC Northwest are non-coded structures and OBC does not express or imply that they meet any Uniform Building Codes**

**Oregon Contractors No. 127055  
Washington Contractors No. OBCNO1\*022CR**



Conley has devoted over 50 years of service to the nursery industry with the development and implementation of quality greenhouse products. Over the years, the Conley name has become synonymous with reliability and value. Long considered a leader in technological innovations, Conley incorporates only state-of-the-art designs, materials and manufacturing techniques in its production of greenhouse structures and related products.

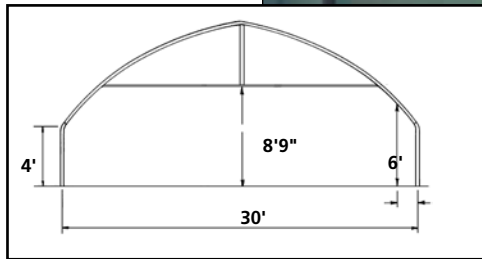
Here are some of the innovations incorporated into the Conley line:

- Superior strength rollformed technology
- Patented condensate removal system
- Cantilevered gutters

**Styles available to fit every installation!**

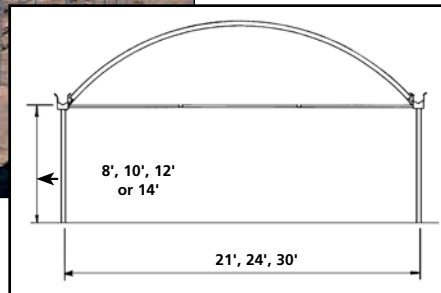
## Ranger Series 2000

Equally at home as a growing area or sophisticated retail center. The Series 2000 is designed for poly, shade or rigid coverings. Engineering available to customer's requirements.



## Super Star Series 3600

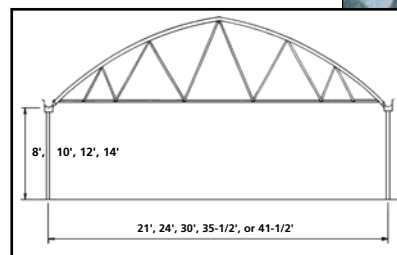
The best value for the dollar, Conley's Series 3600 is designed for poly roof coverings and poly, shade or rigid side and end wall coverings. Available with a 10 pound to 30 pound live load and up to 110 MPH wind loads.



**OBC Northwest offers a full range of Greenhouse Construction Services**

## Arch Series 6500

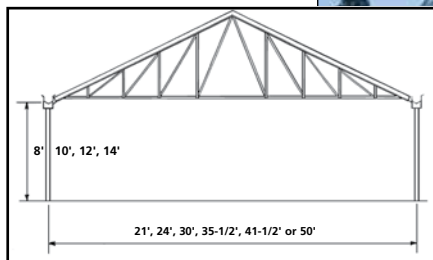
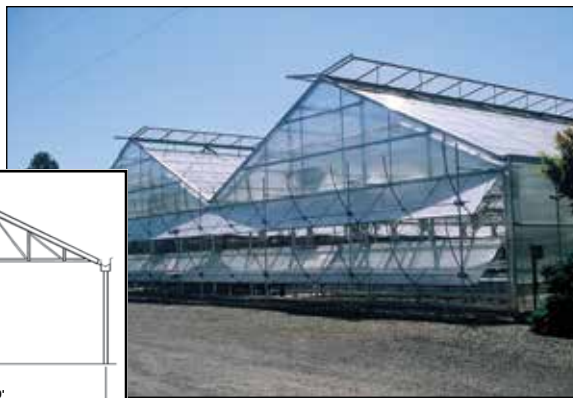
An industry tradition, the Series 6500 Gothic Arch design is functional at both shedding snow and combatting overhead drip. This structure can be glazed in poly or rigid coverings. Available in 10 pound, 20 pound or 30 pound snow load.



**Oregon Contractors  
No. 127055**  
**Washington Contractors  
No. OBCNO1\*022CR**

## Gable Series 7500

The versatility of the Series 7500 makes it ideal for applications ranging from growing to retail or even metal covered houses. This structure is designed to be glazed in poly or rigid coverings. Available in 10 pound, 20 pound or 30 pound snow load.



## Over-Easy Rolling Bench

- Will not tip even if cantilever is fully loaded.
- All parts are pre-punched and pre-formed galvanized steel.
- Conley's Anti-Tip brackets are anchored on both sides of cross bar assemblies.
- Bench top frame is one-piece and has no upper lip to catch pots or plants.
- Stiffener channels in Conley's Anti-Tip bracket minimizes drag on roll bar.
- Conley's peaked roll bar is designed to roll easier and avoids potting soil build-up.

Choose from a variety of widths: 5', 5'6", 6', and 6'6". Length ordered in 2' increments.



## Stand-Firm Bench

Conley's Stand-Firm Bench is made from the same fine quality materials as the Over-Easy Rolling Bench. It is made to anchor to a cement floor or set in a concrete filled footing. Choose from a variety of widths: 3', 4', 5', 5'6", 6', and 6'6". Length ordered in 2' increments.

Both the Over-Easy bench and the Stand-Firm bench are made for three types of bench top materials: **Expanded Metal**, **Easy-Grow Bench Top** or **Shepherd Bench Wire**

## Portable Benches

Choose from a variety of sizes. Widths of 3', 4', 5' or 6' Lengths of 8' or 12' and height of 32"

Features:

- Sturdy design – 20 lbs. ft<sup>2</sup> weight capacity
- Light – easy to move
- Easy to assemble
- Versatile- lends itself to both retail & educational applications as well as temporary potting or work stations.
- Durable plastic or expanded bench top material available
- Wide leg designs increase stability
- Corner protectors virtually eliminate snagging



## Conley Sliding and Swing Doors

All doors come complete with tracks, frame jambs, flashing and hardware. Covering options: fiberglass, metal or polycarbonate.

### A Variety of Doors Are Available:

- Swing Doors
- Single Sliding Doors
- Double Sliding Doors
- Roll-up Doors



## Environmental Controllers

Link4 has an advanced line of greenhouse controllers that provide complete monitoring and adjustment of all equipment - heaters, vents, fans, irrigation - regardless of greenhouse size or type. Customized solutions can be created based on each customer's individual needs.

### iGrow Series

Get real-time energy use and track run time on greenhouse heating and cooling equipment.

- Link multiple greenhouses
- Discover which equipment uses the most energy; adjust to save money
- Easily transfer data to you PC for analysis.
- Easy to operate and modify controls.

### Remote Access

*Text alerts direct to your phone*

Get instant remote access to your monitoring system via computer or cell phone. If conditions change when you're away, immediate corrections and adjustment can be made from any distance.



### Stat Series™

Our Stat series is a reliable and affordable option for localized individual control.



### GrowLink Touch™

Stay in touch using the web, your local network, or your Smart Phone. The Growlink remote access and Data Logging program allows remote programming changes, running graphs, and creating Excel files for all of your data.



### Procom™

One of the most reliable, cost effective, and feature packed control systems available. The top choice for professional greenhouse and indoor growers. Easy to use and install. 24 VAC operations and Manual override switches on each output.

## BioTherm Elements...Enhanced.



### Heating Systems

#### MicroClimate Tubing



BioTherm MicroClimate systems use flexible EPDM rubber tubing, which allows for tight spacing and uniform conductive heat. Easy to install and economical.



### Hydro Sciences

#### Dissolved Oxygen



Boost your Dissolved Oxygen (DO) levels with our molecular oxygen infusion system. Designed to integrate with fertigation and other irrigation systems to promote faster plant growth by increasing the molecular oxygen available at the root zone.



### Optimized Air

#### DehuKing Dehumidifiers



BioTherm's exclusive DehuKing dehumidification systems control humidity while filtering the air, eliminating 99.9% of microorganisms with ultraviolet light.



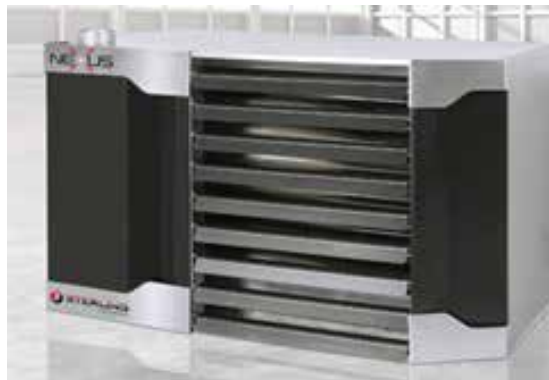
## Therma Grow Greenhouse Heaters



The design combines efficiency, advanced performance, and long component life to reduce energy and maintenance costs, and help grow profits. Therma Grow™ heaters come in two output sizes, 120,000 Btuh and 220,000 Btuh and meet all OSHA emissions requirements for greenhouses. Therma Grow™ Plus models provide even greater heat management features including 2-stage temperature control and heating and air circulation modes.



## Sterling Nexus High Efficiency Heaters



Sterling's Nexus brings gas-fired unit heaters to unprecedented levels of efficiency. Its industry leading 99%\* thermal efficiency combines the latest innovations, including a tri-metal stainless steel heat exchanger and a state-of-the-art proprietary combustion control system.

\*Up to 99% maximum efficiency at full turndown, 95+% certified efficiency at high fire.



## Tubular Gas Fired Unit Heaters

The Sterling tubular heat exchanger has been designed to provide maximum and uniform heat transfer. Units utilize a direct spark pilotless ignition of the burner, providing fast heat delivery. The low pressure drop associated with the design enables heated air to be evenly distributed to the conditioned space.

### TF Unit

The Tubular unit heater (Model TF) is a propeller type unit heater that combines the latest tubular heat exchanger and inshot burner technology.

### GG Unit

These propeller units combine the latest tubular heat exchanger technology with a unique single orifice burner system. Low profile design make the model GG unit ideal for residential, commercial and industrial installations.

All Sterling tubular heat exchangers are constructed of heavy duty 20-gauge aluminized steel. Optional 409 stainless steel is available.



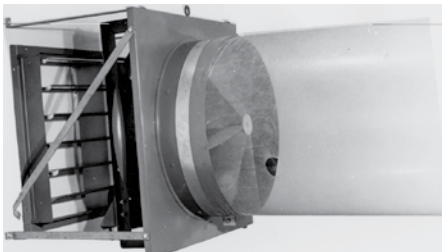
*Sterling TF unit*

Use outside air for combustion, enabling operation in areas having slight negative pressures (near exhaust fans, etc.) with no adverse effect upon combustion or venting. Special environments can be effectively heated since these burners isolate the burner from dust, humidity and non-hazardous chemicals. Uses a 24V thermostat, not included. For application in altitudes above 2,000 ft., the burner orifices need to be derated. Flue not included.

Available in aluminized or stainless steel. Comes with a 10 year heat exchanger warranty. Available in natural gas or propane, in 30,000–400,000 BTU's. Please call for more details.



*Sterling GG unit*



## Power Tube Fan

**Prod. Code GSACPTF**

Specially designed units developed for compatibility with polyethylene tubes. Use in controlled environments where precise tempering of air is critical to production. Perfectly matched for low-velocity tempering of air. Available in 12" to 30" fans.

## Exhaust Fans

Provides high airflow in most types of greenhouse buildings.

Available sizes in increments of 6", from 24" to 60". Combine exhaust fan, aluminum shutter, and housing for a complete ventilation package.



## Shutters

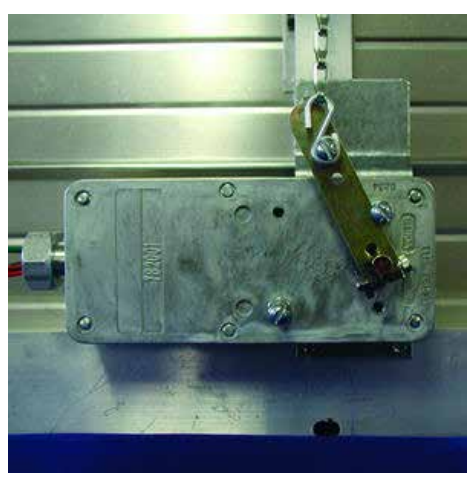
Allows airflow in a single direction; prevents air entry when the fan is not in operation. Constructed of an extruded aluminum frame and interlocking blades for maximum weather seal. Can be gravity or motor operated. Various size options available from 12" to 66"; call for sizes.



## Shutter Motors

Used to open shutter wider and improve airflow. Kits for small and large shutters available.

Prod. Code	Description
<b>GSSHUTTERMOTORSM</b>	Motor kit for shutter up to 48"
<b>GSSHUTTERMOTORLG</b>	Motor kit for shutter over 48"



## Housing

Slope or Slant wall housing prevents warm air from being lost to outside cool air in cold climate conditions. Flush mount from inside the building, and shed water and snow once installed.



## Thermostats

Prod. Code	Description
<b>GSACT109</b>	T-109 2-Stage thermostat
<b>GSST335</b>	T335 115/230 volt thermostat
<b>GSSTH109</b>	TH109 2-Stage thermostat
<b>GSST518</b>	TH518 1 Speed industrial thermostat (ul listed)



T335

## Cooling Pads

Specially formulated cellulose pads made with insoluble rot-salts, stiffening saturants, and wetting agents to prevent sagging, rotting and provide maximum cooling when warm air passes through. For maximum airflow, maximum evaporation, structural strength, and long life, thin pads (4") offer maximum airflow while thick pads (6") provide greater evaporation and cooling. Available with edge coating to increase strength, reduce build-up and algae, and extend life of pads in certain applications.

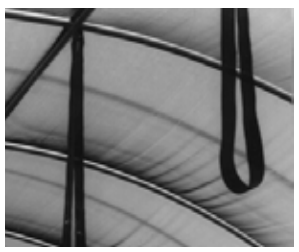
Available in 4" and 6" thickness, 12" width. Height increments every 12", from 24" to 72".





## Poly Tube Hangers

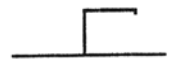
Made of a durable UV resistant polypropylene webbing. Brass grommet eyelets with hooks. Custom sizes available.



Prod. Code	Tube Size	Hanger Length
GSCH06	18"	6'
GSCH07	24"	7'
GSCH08	30"	8'

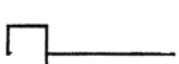
## Aluminum Extrusions

24' Universal Vent Seal



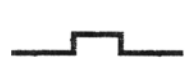
GSEXA9970015

24' Gable End Bar



GSEXA9970250

Twinwall Glazing Bar Cap

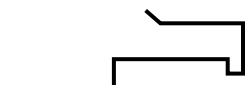


GSEXA0070355

Twinwall Glazing Bar



GSEXA9970350



GSEXA0070361

## Conley Roll Form

GHCG0000312



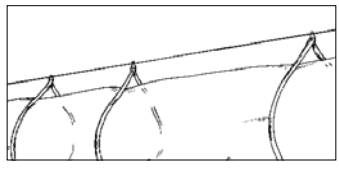
## Aluminum Lathe

GSSEXALL



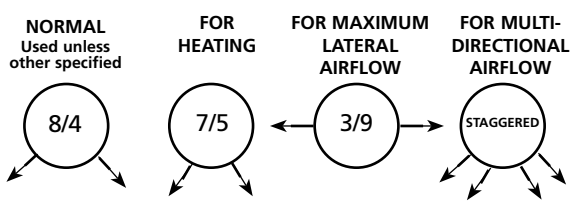
## Polyethylene Convection Tube

Used in conjunction with Coolair Power Tube Fans



This 4 mil polyethylene tube is protected by a strong, untinted ultra-violet inhibitor. The plastic also has an additive to increase its strength and light penetration. Equivalent strength of a 5-1/2 mil tube. Manufactured using a formulation specified for greenhouse environments and fully guaranteed for one year. Each tube is custom punched with proper diameter holes and spacing.

### Punch Positions available:

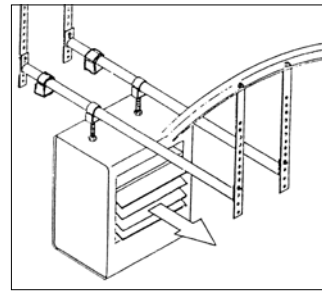


## Heater Hanger

In Line Heater Hanger

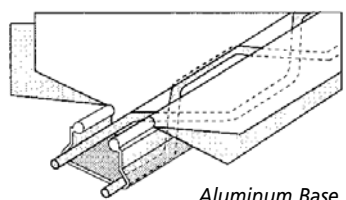
GHCH003000

Not to be used in 15' or 20' wide frames.



## Film & Cover Lock

Very useful for holding poly and shade cloth materials. You can put one spring in to hold poly, then apply shade cloth with an additional spring. Sold in 6' lengths. Spring is sold separately. Sold by the each. Packaged 20 per bundle.



Aluminum Base  
Stainless Steel Spring

Prod. Code	Product	Wt. Lbs.
GSSLB06	Locking channel	1.08
GSSLS06	Locking spring	.15

## Cross Connectors

GH138CC, GH 158CC, GH2CC

## Endwall Tabs

GHCT0030880, GHCT00380890

## Pipe Straps

GH1PS, GH114PS, GH112PS, GH2PS

## Brace Bands

GH138BB, GH158BB, GH178BB

## Spacer Washers

GHCW9970300

## Neoprene Washers

## Lap Fasteners

## Caulking

## OBC Swing Doors

## OBC Sliding Doors

## Pop Rivets

GHBRW

## #14 Wood Screws

GH14WS

## #12 Tek Screws w/ neo washers

GH12TSW

## Horizontal Air-Flow Fans Greenhouse Air Circulator

- Fan holes are larger than traditional basket fans & provide double the circulation of traditional models
- Heavy-duty bearing motors are maintenance-free & highly energy efficient
- Noise levels are low – well below OSHA noise level requirements for plant environments
- The fan mounts closer to the ceiling trusses for more head room clearance

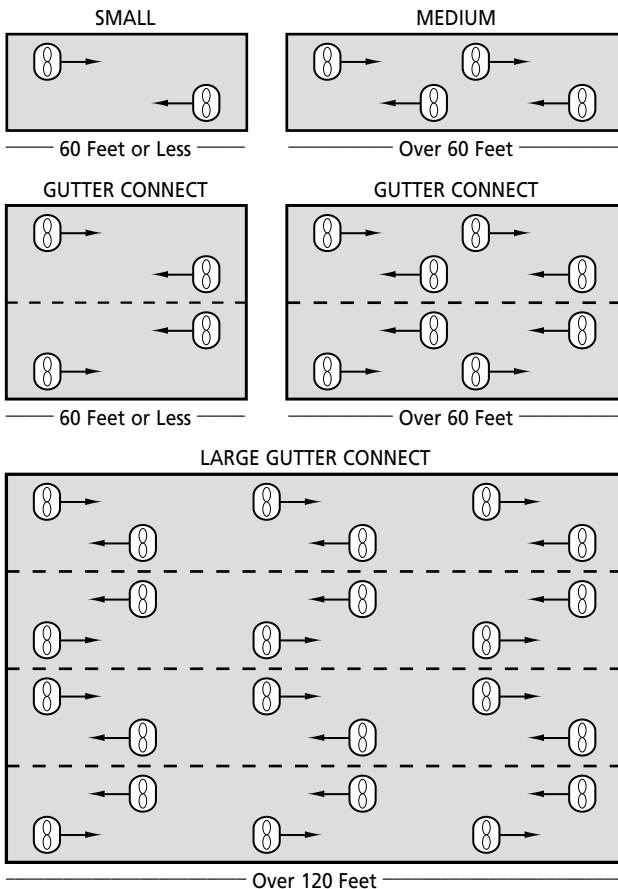
Prod Code	Size	Wt. Lb	CFM	HP	Volts	Amps
GSSVS08VK	8"	8	466	1/100	115	.6
GSSVS12	12"	18	1554	1/10	115/230	.9/.45
GSSVS20	20"	38	5516	1/3	115/230	3.8/1.9
GSSVS24	24"	46	7784	1/2	115/230	5/2.5



## Mist Kits

This mist kit can cool temperatures up to 20°F using 1/2 gallon of water per hour at 40 PSI. Adjustable nozzles have a stainless steel orifice and pin and includes an O-ring for leak proof assembly. For use on circulation fans.

- GSSMK1200** Mist Kits - 12" horizontal air flow fans
- GSSMK100** Mist Kits - 20" and 24" fans



## Premium Greenhouse Shading Compound

**A gallon of concentrate, mixed with water should cover approx. 2,000 sq. ft. of area.**

Developed by greenhouse growers with one goal in mind: to produce the finest shading compound on the market and offer it at a fair price. It effectively reflects the rays of the sun. It will enable the grower to control light intensity and reduce heat build-up in the greenhouse environment. It is usually used at a rate of 1 part shading compound to 8 parts water.

### Available in two formulations:

#### Light stick (Prod. Code: GSSHADELTSTICK5)

- Perfect for seasonal or temporary shading
- Formulated with very little binding agent
- Majority removed with moderate rain
- Easy 100% removal with light brushing

#### Regular stick (Prod. Code: GSSHADEREGSTICK5)

- Perfect for year-round shading
- Formulated with medium binding agent
- Some shading removed with heavy rain
- Most shading removable with moderate brushing
- Holds up to coastal fog and drizzle

Size	Wt. Lb.
5 gallons	65



## Antidrip Compound

Sun Clear® is supplied as a concentrated liquid. It works well on polyethylene, vinyl film plastics and rigid materials such as fiberglass and polycarbonate to stop condensation and increase light transmission. Sun Clear® coated plastic will transmit up to 50% more light than dripping, uncoated plastic.

Prod. Code	Case Quantity	Wt. Lb.
GSSCG	Gallon 4	9.5



## Dura-Bench Bench Top

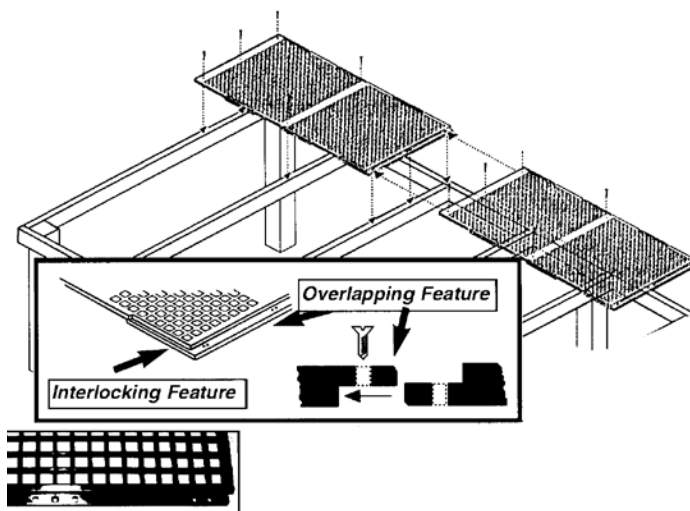
**GSBEZG**

Overlapping style recommended for permanent, continuous benches. Used in wood frame bench construction or metal benches such as Conley's Over-Easy and Stand-Firm benches.

**Features:**

- Slats interlock on the 4' sides for easy assembly and strength.
- Slats can be cut to fit any dimension.
- In addition to end supports, slats must be supported.
- Panel sizes available: 2' wide x 4' long, 1" square mesh.

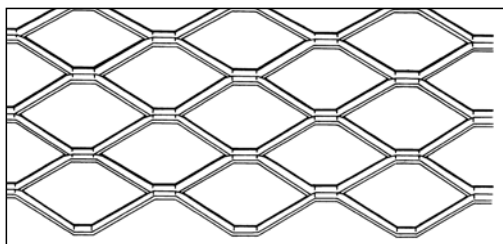
**Wt/Lb 6**



## Expanded Metal Bench Top

**GSBXM\***

- 3/4", 13 gauge panels. Hot-dipped galvanized after cut.
- A heavy-duty uni-shear recommended to cut panels to size; they can be obtained from rental yard.
- Panel sizes available: 6' wide x 8' long
- Custom sizes, special order.



## Poly Repair Tape

UV stabilized, 7.5 mil polyethylene tape lasts up to two years.

Prod. Code	Wt. Lbs.	Size	Color
PFPRT02B	1	2" x 108'	Black
PFPRT02	.625	2" x 108'	Clear
PFPRT04	1.5	4" x 108'	Clear
PFPRT06	2	6" x 108'	Clear
PFPRT10	3.5	10" x 108'	Clear



## Binding Tape Tie Down

UV stabilized, polypropylene webbing. Tie down can be used over the top of your greenhouse poly, in between the greenhouse bow frames. Extra protection against heavy winds. Will not rub or wear poly film.

Prod. Code	Wt. Lbs.	Roll Size
SCBT234300	2.5	2-3/4" x 300'



## Batten Tape

White vinyl strip, 3/4" wide x 1/32" thick, formulated to resist UV radiation and extreme cold.

Put batten tape over your greenhouse to secure polyfilm down. Soft sides help prevent material from cutting into your polyfilm during high winds.



Prod. Code	Wt. Lbs.	Roll Size	Color
GSBT	7.5	3/4" x 500'	White

## Macrolux Tape



Prod. Code	Description	Roll Size
GSMATA112	Aluminum	1-1/2" x 150'
GSMAT112	Vent Foil	1-1/2" x 150'

## Mounting Bracket

Dutch Fork has designed an effective bracket to stabilize and hold greenhouse inflation blowers.



Prod. Code	Product	Wt. Lbs.
<b>GSLBLB</b> (use w/ GSG2C647)	<b>inflation fan mounting bracket</b>	<b>1</b>
<b>GSLBSBK</b> (use w/ GSSB148)	<b>square blower bracket kit</b>	<b>1</b>

## Outside Air Inflation Kit

**GSOAIK** – Contains a new blower that uses a permanent split capacitor motor requiring less energy to keep a greenhouse inflated.

**Kit contains:**

- Inflation Blower
- Mounting Bracket with Air Deflector
- Outside Air Regulator
- 18" Jumper Hose

## Jumper Hose

24" black corrugated hose with simple twist-on fittings.



Prod. Code	Length
<b>GSJK24</b>	<b>24"</b>
<b>GSJK36</b>	<b>36"</b>
<b>GSJK48</b>	<b>48"</b>
<b>GSJK72</b>	<b>72"</b>

## Inflation Blower

Rated for continuous duty with adjustable air inlet dampener. Maximum ambient temperature 104° F. 60 CFM



Prod. Code	Wt. Lbs.	Volts	Amps	HP
<b>GSIB60</b>	<b>3.75</b>	<b>115</b>	<b>.49/42</b>	<b>1/125</b>

## Outside Air Inlet Retro Fit Kit

**GSBLRFK** – This kit brings cooler outside air into the center layers of the inflated plastic. Retro kit for existing blowers. Kit includes: 18" air intake hose, intake assembly and air regulator.

Prod. Code	Wt. lbs.
<b>GSBLRFK</b>	<b>1.35</b>

## Heavy Duty Inflation Blower

Requires a special bracket.

Prod. Code	Wt. Lbs.
<b>GSSB148</b> (use with GSLSBK)	<b>5</b>



## Zip Up™ Peel & Stick Greenhouse Zipper

The original "peel & stick" access to greenhouse coverings. Cut with a razor knife to create access. Two units spaced apart will create an opening that can be rolled up. Color: Blue



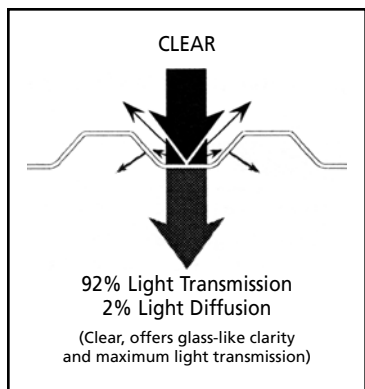
Prod. Code	Wt. Oz.	Size
<b>GSZ73WH</b>	<b>3</b>	<b>7'x3"</b>

## Velcro Roll

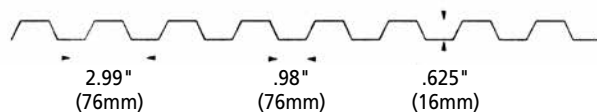
Self adhesive, black

Prod. Code	Size
<b>MSVELCRO0215</b>	<b>2" x 15'</b>





## Polycarbonate Plus Greca



Corrugated panels come with a warranted anti-condensate control and UV protection on one side. Offers the same sparkling clarity as glass, but transmits as much as 7% more light. These panels are exceptionally resistant to weathering. Co-extruded UV protection ensures against loss of light transmission due to yellowing. Lightweight and flexible yet it is virtually unbreakable.

**Full Lengths: Clear = 32' / Opal = 32' - OBC will cut shorter lengths from full lengths.**

**Prod. Code GSDG4133\_**

**Structure Type: Greca**

Pitch .....	2.99"	Transmission (Gray) .....	35%
Overall Width .....	49.6"	ASTM-D1003 (Opal) .....	50%
Overall Length.....	up to 32'	Coefficient of	
Net Coverage.....	47.8"	UV Transmission .....	<1%
Depth .....	0.703"		
Thickness.....	0.03"		
Light (Clear).....	89%		

## Polycarbonate 8mm Twin-Wall



Twin-Wall polycarbonate provides clarity, durability and strength. Because the panels have an insulating air-filled space between the inner and outer wall, energy efficiency is increased. While 4mm, 6mm, 8mm, 10mm and 16mm thicknesses are available, 8mm is the industry-standard thickness for most double layer polycarbonate products in the commercial greenhouse market. This is because it offers the best combination of strength, rigidity, good insulation value and cost, as well as a wide variety of attractively priced glazing systems.

**Full Lengths: Clear = 32'**  
**OBC will cut shorter lengths from full lengths.**

**Prod. Code GSTG7125\_**

**Structure Type: 8mm Double Wall**

Overall Width .....	71.25"
Overall Length.....	up to 36'
Thickness.....	8mm
Light (Clear).....	79%
Transmission (Bronze).....	42%
ASTM-D1003 (Opal) .....	32%
Coefficient of Linear	
Thermal Expansion.....	0.177" / 3.28'
UV Transmission .....	0.1%
Minimum Bending Radius .....	55"
U-Value BTU/hr.- ft. 2 F .....	0.60
R-Factor.....	1.667



GSCXCSRR



GSCXCSV

## Closure Strips for Polycarbonate Sheeting

Made of foam rubber. 100 per box. Sold per each.

Prod. Code	Description
GSCXCSRR	Corrugated, 1" x 3'
GSCXCSV	Vertical, 1" x 3'
GSCXCSDW	DBL Wall 1" x 3/4" x 3'

# TUFFLITE™

**Tufflite™ IV Film** 6 mil with UV stabilizers. 4-year warranty if double layered and inflated with inflation blower. Light Transmission 91.6%. PAR Rating 88.1%

Prod. Code	Roll Size	Net Wt.	Prod. Code	Roll Size	Net Wt.	Prod. Code	Roll Size	Net Wt.
PFT4101006	10' x 100'	39	PFT4281506	28' x 150'	148	PFT44402506	40' x 250'	300
PFT4141006	14' x 100'	52	***PFT4321006	32' x 100'	96	PFT4403006	40' x 300'	360
PFT4161006	16' x 100'	59	PFT4321106	32' x 110'	105.6	PFT4421006	42' x 100'	126
PFT4201006	20' x 100'	60	PFT4321256	32' x 125'	120	PFT4421506	42' x 150'	189
PFT4201106	20' x 110'	66	***PFT4321506	32' x 150'	144	PFT4481006	48' x 100'	144
PFT4201506	20' x 150'	90	PFT4361106	36' x 110'	118.8	PFT4481506	48' x 150'	216
***PFT4241006	24' x 100'	72	PFT4361506	36' x 150'	162	PFT4501006	50' x 100'	150
PFT4241106	24' x 110'	79.2	***PFT4401006	40' x 100'	120	PFT4501506	50' x 150'	252
PFT4241256	24' x 125'	90	PFT4401106	40' x 110'	132	PFT4561006	56' x 100'	168
***PFT4241506	24' x 150'	108	PFT4401256	40' x 125'	150	PFT4561506	56' x 150'	252
PFT4281006	28' x 100'	102	***PFT4401506	40' x 150'	180			
PFT4281106	28' x 110'	92.4	PFT4402006	40' x 200'	240			

56' is widest T4 that can be ordered  
\*\*\*Also available in white

**Nursery Clear 4** 4 mil with some UV stabilizers. 1-year warranty. Light Transmission 92.5%. PAR Rating 89.9%

Prod. Code	Roll Size	Net Wt.	Prod. Code	Roll Size	Net Wt.	Prod. Code	Roll Size	Net Wt.
PFNC82204	8' x 220'	35.2	PFNC162204	16' x 220'	70.4	PFNC282204	28' x 220'	123.2
PFNC101004	10' x 100'	20	PFNC182204	18' x 220'	79.2	PFNC321004	32' x 100'	64
PFNC102204	10' x 220'	44	PFNC201004	20' x 100'	40	PFNC321504	32' x 150'	96
PFNC121004	12' x 100'	24	PFNC201504	20' x 150'	60	PFNC401004	40' x 100'	80
PFNC122204	12' x 220'	52.8	PFNC241004	24' x 100'	48	PFNC401504	40' x 150'	120
PFNC124404	12' x 440'	105.6	PFNC241504	24' x 150'	72	**PFNC421004	42' x 100'	84
PFNC142204	14' x 220'	61.6	PFNC281004	28' x 100'	56	PFNC481004	48' x 100'	96
PFNC144404	14' x 440'	123.2	PFNC281504	28' x 150'	84			

\*\*NON STOCK ITEM, ALLOW FOR LEAD TIME

**Nursery Clear 6** 6 mil with some UV stabilizers. 1-year warranty. Light Transmission 92.5%. PAR Rating 89.9%

Prod. Code	Roll Size	Net Wt.	Prod. Code	Roll Size	Net Wt.	Prod. Code	Roll Size	Net Wt.
PFNC101006	10' x 100'	30	PFNC281006	28' x 100'	84	PFNC421006	42' x 100'	126
PFNC121006	12' x 100'	36	PFNC281506	28' x 150'	126	**PFNC481006	48' x 100'	144
PFNC201006	20' x 100'	60	PFNC321006	32' x 100'	96	PFNC481506	48' x 150'	216
PFNC201506	20' x 150'	90	PFNC321506	32' x 150'	144	PFNC501006	50' x 100'	150
PFNC241006	24' x 100'	72	PFNC401006	40' x 100'	120			
PFNC241506	24' x 150'	108	PFNC401506	40' x 150'	180			

\*\*NON STOCK ITEM, ALLOW FOR LEAD TIME

## Blackout Poly

**White/Black Poly** 5 mil (one season)

Prod. Code	Roll Size	Net Wt.
PFWB201005	20' x 100'	52
PFWB241005	24' x 100'	65
PFWB321005	32' x 100'	115
PFWB501005	50' x 100'	130

**Reinforced White/Black Poly** 8 mil with reinforcement

Prod. Code	Roll Size
PFRBW241008	24' x 100'
PFRBW541008	36' x 100'
PFRBW541008	54' x 100'



# Shade Cloth

## Nico-Shade Fabric

Features:

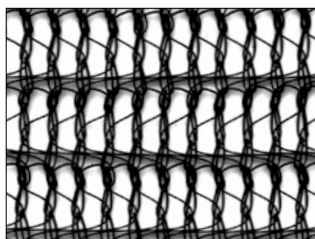
- Woven polypropylene fabric
- Reinforced selvages for stronger edges
- Resists mildew and abrasion
- Resistant to most acids, alkalis and solvents
- Shade range: 47%, 55%, 63%, 73%, 80%
- Stock Widths: 6', 10', 12'. Can be converted up to 50'



## Nico-Knit Fabric

Features:

- Knitted polyethylene fabric
- Good for use on truck tarps or heavy stress areas
- Resists tearing and puncturing
- Will not unravel
- Shade range: 40%, 50%, 60%, 70%



\* Now also available in 50% White.

All shade fabric can be converted to your specifications at our factory. For more information call: 1-800-477-4744.

## Custom Fabric Conversions at OBC's Factory

**Guaranteed quality and service • Sizing • Taping • Grommets • Slitting • Special handling**

**Sizing:** We can seam Nico-Shade fabric together to make 16', 18', 20', 22', 24', 26', 28', 30', 32', 36', 38', and 40' wide without any upcharges. Pieces wider than 40' will be at an additional \$ .01 per square ft.

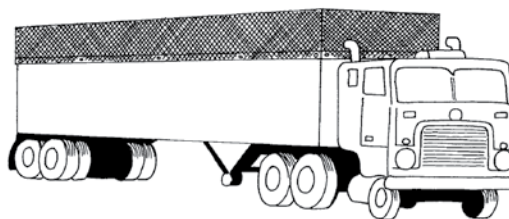
**Taping:** Used on edges for reinforcement, also used when grommets are installed.

**Grommets:** #2 grommet with a 3/8" opening.

**Slitting:** It is done when the width of the material needs to be cut down from our standard width.

**Special Handling:** We can customize special shapes per your drawing. We can upgrade or re-tape worn edges. We can also replace missing grommets on your shade cloth. With these services, you might be able to get a few more years out of the life of your material!

**Pre-cut Pieces**  
 10'x12' with tape and grommets  
 Available in 47% 55% 63% 73% and 80% woven shade  
 Grommets 2' on center  
 Code# SC\*1012



## Truck Tarps

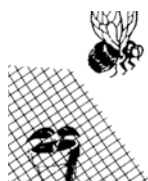
Truck tarps fabricated to your size specifications with two rows of grommets. Second row of grommets added two feet from edge of tarp for flexibility. OBC Northwest recommends that truck tarps be made from 80% Green Lathe for extra durability and prolonged life of tarp.

We can custom make one for your needs, or we have standard sizes available.

Product	Size	Shade	Grommets
SC801850JRT	18' x 50'	80%	2' on center around edges
SC802054JRT	20' x 54'	80%	around edges and an extra row 2' in on lengths
SC80GL1854TTS	18' x 54'	80%GL	around edges and an extra row 2' in on lengths

# Insect Screen Fabric

## Bee Cage Fabric & Insect Screening



Please call 1-800-477-4744 for more information

Item	Product	Code#	Composition	Intended Use	Shade %	Air Flow Reduction	Width
SCISEB	Econet B	100400	Polyester	Insect screen	10%	5%	13.8'
SCISELS	Econet LS	2777	Pol/Acrylic	Insect screen	15%	23%	13.1'
SCISEM	Econet M	4045	Polyester	Insect screen	15%	35%	11.8'
SCISES	Econet S	1515	Polyester	Insect screen	15%	60%	11.2'
SCISSET	Econet T	1535					

## Jute Erosion Netting

Uses/features:

- Erosion control problems
- Landfill slopes
- Highway construction
- Landscape projects
- Sod stabilization
- Reclaiming wetland areas
- All natural bio-degradable material
- Best results when anchored with staples



Prod. Code	Size: Width/Length	Wt. Lbs.
MSNE	1/2" mesh 4'x 75 yards	102

## Erosion Net Staples



Prod. Code	Size: Width/Length	Shape	Wt. Lbs./100	Qty. Per Bag	Qty. Per Case
MSNS	1" x 6"	Square Top	3	100	1000
MSNS8	1" x 8"	Square Top	8	100	500

## Ground Cover Cloth



A tough versatile fabric designed to last years. Woven to keep weeds out and allow water to slowly disperse. Beware of light imitation film fabrics on the market. Look for Baycor ground cover cloth and you will be happy you switched from film to woven ground cover. 3.2 oz per square yard and 24 x 12 construction.

Prod. Code	Standard Roll Sizes: Width/Length	Wt. Lbs.
SCGC03300	3' x 300'	26
SCGC04300	4' x 300'	34
SCGC06300	6' x 300'	51
SCGC10300	10' x 300'	85
SCGC12300	12' x 300'	102
SCGC15300*	15' x 300' / 15.5' x 300'	114

Other sizes available, please call for details

## White Ground Cover Cloth



3.1 oz per square yard.  
Water flow 10 GPM.  
UV Resistance @2400 hours 80%. Puncture strength 60lbs.

Prod. Code	Standard Roll Sizes: Width/Length	Wt. Lbs.
SCGC12300WHITE	12.5' x 300'	100
SCGC15300WHITE	15.5' x 300'	125

## Black Plastic Mulch

SRM Black plastic mulch for use with or without row covers. Black plastic has been used to suppress weed growth, reduce soil water loss, increase soil temperatures and improve vegetable yields.

**Specifications:** 1.0 mil, high density polyethylene.

Prod. Code	Size: Width/Length	Wt. Lbs.
MSCCM4600	4' x 500'	10
MSCCM44000	4' x 4000'	85



Call or go online for large quantity orders, additional info and current prices.



## Tex-R Geodisc™

A revolutionary product designed to help control weeds in your containers. Cuts labor costs allowed for weeding your containers with herbicides and/or by hand. Economical and environmentally friendly.



Product Code	Description	Quantity/Box	Weight/Pallet	Box/Pallet
MSTEXGEO065II	Geodisc 6.5"	4,500	460	12
MSTEXGEO070II	Geodisc 7"	4,500	515	12
MSTEXGEO080II	Geodisc 8"	4,500	640	12
MSTEXGEO090II	Geodisc 9"	4,500	555	8
MSTEXGEO100II	Geodisc 10"	2,000	480	12
MSTEXGEO110II	Geodisc 11"	2,000	555	12
MSTEXGEO120II	Geodisc 12"	2,000	640	12
MSTEXGEO130II	Geodisc 13"	2,000	525	8
MSTEXGEO140II	Geodisc 14"	2,000	590	8
MSTEXGEO150II	Geodisc 15"	500	290	12
MSTEXGEO160II	Geodisc 16"	500	320	12
MSTEXGEO180II	Geodisc 18"	500	380	12
MSTEXGEO240II	Geodisc 24"	500	640	12
MSTEXGEOSQ0400IIX2	Geodisc Square 4"	8000	860	12
MSTEXGEOSQ0600II	Geodisc Square 6"	4,500	490	12
MSTEXINS1601	16" x 16" Pieces Non-Woven	400	415	12

## Natural Tree Moss

These blankets of decorative moss are suitable where large pieces or quantities of moss are needed. Moss is removed from the tree, compressed and packed without removal of forest residue. Moss comes packaged in compressed pony bales. (3.25 cu. ft.)

Prod. Code	Wt. Lbs.
MSMTM	25





The AgroFabric® System provides essential frost and freeze protection for vegetables, foliage, nursery stock, citrus, strawberries, containerized ornamentals and turf. There's an AgroFabric cover for just about any crop or weather condition – they're ideal tools for overwintering, wind break and overall yield enhancement.

**Lightweight**

+2° TO 4°F

- PRO17
- PRO19
- PRO25

**Medium Weight**

+4° TO 6°F

- PRO34
- PRO42

**Heavy Weight**

+6° TO 8°F

- PRO70

**Winter Blanket**

8°+ F

- PRO80
- PRO90
- PRO100
- PRO140
- PRO200



<b>Specifications:</b>	Elongation MD .....	50
Basis Weight .....	Elongation CD .....	60
Tensile Strength MD .....	Air Permeability (cfm).....	650
Tensile Strength CD.....	Impact Resistance.....	50

**PRO17**

Our most popular weight fabric offers excellent flexibility as an emergency frost protector as well as an integral management tool for growers looking to encourage earliness and extend harvest windows. Pro 17 is a 17g/sm or .5 oz/sq yd material that allows for approximately 95% light transmission. Pro 17 will raise minimum temperatures by as much as a 4°F. Other sizes available.

Prod. Code	Description	Wt. Lbs.
MSCCPRO1710250	10' x 250' Crop Cover	10
MSCCPRO1710500	10' x 500' Crop Cover	20
MSCCPRO1715300	15' x 300' Crop Cover	16

**PRO19**

Lightweight – excellent for wind break and insect control. .55oz/sq yd. 95% light transmission. Raise temperature 2-4°F

Prod. Code	Description	Wt. Lbs.
MSCCPRO19151000	15' x 1000' Crop Cover	60

Product comes in 5' width increments and custom lengths. Stock sizes listed, call for availability. Non stock sizes estimated at 1-2 weeks lead time to receive.

**PRO25**

Excellent for insect control or wind break, .75 oz/sq yd, 85% light transmission, + 2-4 degrees above minimum temperature.

Prod. Code	Description	Wt. Lbs.
MSCCPRO2510250	10' x 250' Crop Cover	15

**PRO34**

Medium weight fabric – excellent for spring use on nursery stock, foliage and vegetables. 1oz/sq yd. 70% light transmission.

Prod. Code	Description	Wt. Lbs.
MSCCPRO3415300	15' x 300' Crop Cover	31

**PRO50**

Heavy weight material – ideal for over-wintering containerized ornamentals. Provides emergency freeze protection. 1.5oz/sq yd. 50% light transmission. 6-8 degrees above minimum temperature.

Prod. Code	Description	Wt. Lbs.
MSCCPRO5015500	15' x 500' Crop Cover	78

**PRO70**

Extra heavy weight fabric – good for harsh climates. 2oz/sq yd. 35% light transmission. Raises temperature 8+ degrees..

Prod. Code	Description	Wt. Lbs.
MSCCPRO7015300	15' x 300' Crop Cover	63

Also available in Pro 80, 90, 100, 140, and 200.



Product Code	Description	Max. Liq. Volume	Count	Weight/Lbs.
PPW100112	6" RND x 6" Dp	2.48 qt / 2.351 L	44	13
PPW100512	7" RND x 9" Dp	1.28 gal / 4.87 L	40	17
PPW100912	8" RND x 6" Dp	1.04 gal / 3.94 L	68	26
PPW101114	8" RND x 8" Dp	1.62 gal / 6.14 L	40	18
PPW101312	9" SQ x 9" Dp	1.99 gal / 7.55 L	50	37
PPW101412	10" RND x 7" Dp	1.80 gal / 6.84 L	40	26
PPW101612	10" RND x 10" Dp	2.55 gal / 9.68 L	36	31
PPW101912	11" SQ x 11" Dp	3.77 gal / 14.30 L	36	40
PPW102312	12" RND x 11" Dp	3.40 gal / 12.90 L	32	35
PPW102512	12" RND x 16" Dp	5.73 gal / 21.70 L	26	40
PPW102712	13" RND x 9" Dp	4.12 gal / 15.60 L	36	39
PPW103312	15" RND x 13" Dp	6.55 gal / 24.80 L	16	31
PPW103412	14" Garden Planter	5.20 gal / 19.70 L	16	36
PPW103512	15" RND x 16" Dp	7.97 gal / 30.20 L	14	28
PPW103712	18" RND x 12" Dp	9.90 gal / 37.50 L	12	39
PPW103812	18" Garden Basket	5.99 gal / 22.70 L	20	39
PPW103912	18" RND x 16" Dp	12.15 gal / 46.00 L	10	33
PPW104012	21" RND x 12" Dp	12.15 gal / 46.00 L	10	40
PPW104112	21" RND x 16" Dp	16.11 gal / 61.00 L	8	38
PPW104309	24" RND x 18" Dp	23.38 gal / 88.50 L	1	8
PPW104522	10" SQ HB	1.84GAL/6.98L	22	25
PPW105112	10" RND HB	1.34 gal / 5.10 L	22	18
PPW105512	12" RND HB	2.09 gal / 7.93 L	22	25
PPW105612	15" DEC-A-POT 8" Dp	3.93 gal / 14.90 L	22	24
PPW105912	12"SQ HB	2.80 gal / 10.60 L	22	37
PPW106612	12" Cascade Basket	2.34 gal / 8.87 L	22	22
PPW106912	16" x 8" Gar. Bskt.	4.43 gal / 16.80 L	20	31
PPW107112	14" XL RND HB	3.96 gal / 15.00 L	20	27
PPW107312	10" Garden Planter	2.13 gal / 8.07 L	16	20
PPW107712	10" XL II RND HB	1.59 gal / 6.054 L	22	23
PPW107812	12" XL II RND HB	2.69 gal / 10.20 L	22	31
PPW109612	10" Bell Series	1.90 gal / 7.21 L	16	19
PPW109712	12" Bell Series	3.35 gal / 12.71 L	16	28
PPW109812	14" Bell Series	5.28 gal / 20.01 L	16	37
PPW109912	16" Bell Series	7.91 gal / 29.9 L	10	32
PPW888111	16" Gar. Bskt. Hg. Assm.		20	23
PPW888211	18" Gar. Bskt. Hg. Assm.		20	23
PPW888514	4 St. Nylon Hanger, 10" & 12"		22	2
PPW888899	4 Wire 26" Heavy Duty Hanger		1	.05





## Poly Cans

Poly cans are sold by the stack. Available in black.  
(DS)\* = Fits the Don Sprague hanger

Prod. Code	Size	No. In Stack	Wt. Can Lbs.
PPA01DB	6-3/8" Round x 7" deep (No. 1 Deep)	50	0.180
PPA02DPB	9" Round x 7.87" deep (No. 2 Deep)	25	0.688
PPA03SB	10-1/4" Round x 8" deep (No. 3 Deep)	25	0.800
PPA03DPB	10-1/2" Round x 9" deep (No. 2 Deep)	25	1.300
PPA05SQB	12" Round x 10" deep (No. 5 Deep)	61	1.240
PPA050PB	11" Round x 12" deep (No. 5 Deep)	20	1.300
PPA05TB	13-3/8" Round x 9" deep (No. 6 Tub)	25	1.240
PPA07SB	14" Round x 9-3/4" deep (No. 7 Squat)	15	1.500
PPA07DPB	14" Round x 11-3/8" deep (No. 7 Deep)	15	1.730
PPA10SB	17-5/8" Round x 12" deep (No. 10 Squat)	20	1.200
PPA10SHDB	17-3/8" Round x 11-1/2" deep (No. 10 S HD) DonSp	20	2.600
PPA15SBL	19" Round x 15" deep (No. 16 Short)	10	2.595
PPA20SB	22" Round x 16-3/4" deep (No. 20 Short)	5	3.600

## Round Standard Pots



### ROUND STANDARD POTS

Prod. Code	Size	No. In Case	Wt. Case
PPAR71234	7-1/2" Round (3/4 size) x 5-3/4" deep	72	29
PPAR1012S	10-1/2" Round x 8-1/4" deep	14	13

### ROUND POTS – RECESSED DRAIN

Prod. Code	Size	No. In Case	Wt. Case
PPAR6412S	6"x 4-1/2" deep (recessed drain)	200	23
PPAR66S	6"x 6" deep (recessed drain)	184	23
PPAR4313S	4"x 3-1/3" deep (recessed drain)	360	23
PPAR44S	4"x 4" deep (recessed drain)	360	23



## Saucers

Saucers are available for round pots. Sizes range from 6"-25" base diameter. All sizes available in black, sizes 6"-16" are also available in green.

### SAUCERS - BLACK

Prod. Code	Size	No. In Case	Anderson #
PPAS06B	Number 6 Saucer (6" diameter)	128	2209
PPAS08B	Number 8 Saucer (8" diameter)	96	2221
PPAS10B	Number 10 Saucer (10" diameter)	42	2227
PPAS12B	Number 12 Saucer (12" diameter)	48	2233
PPAS14B	Number 14 Saucer (14" diameter)	40	2239
PPAS16B	Number 16 Saucer (16" diameter)	40	2248
PPAS18B	Number 18 Big Saucer (18" diameter)	10	x0018
PPAS20B	Number 20 Big Saucer (20" diameter)	5	x0020
PPAS25	Number 25 Super Saucer (25" diameter)	5	x0025

## Poly Flats



Prod. Code	Size	Depth Of Flat	Sold By Ctn: No. In Ctn.	Wt. Ctn. Lbs.
PPAFDB	15-3/4"x 15-3/4"	5"extra deep	25	39.0
PPAFHD	18-1/2"x 14-1/4"	2-1/2"	25	31.25
PPAFS	17"x 17"	1-3/4"	50	26.0
PPAF1020	10"x 20"	2-3/8"	25	12.5
PPAFSD	17"x 17"	4"	25	27

## Square Pots Side Drainage

Sold by the case. Available in black or green.

\*\*\*Number of pots fit In a flat

Prod. Code	Size /Desc	Case Qty	Wt./Case	Heavy Duty ***	17x17***	10x20***
*PPASQSD214	2-1/4"x 2-1/2"	950	30 lb	48 Perf	49 Perf	36 Gap
*PPASQSD2	2"x 2-1/8"	2052	33 lb	63 Perf	64 Perf	50 Perf
*PPASQSD214R	2-1/4"x 3-1/4" rose pot	950	28 lb	48 Perf	49 Perf	36 Gap



## Square Band Pots

Sold by the case. Available in green. Bottoms with drainage.

\*\*\*Number of pots fit In a flat

Prod. Code	Size /Desc.	No. In Case*	Wt. Case Lbs.	Heavy Duty***	17x17***	10x20***
PPABP3916	3-9/16"x 4"	348	23	20	15 Gap	18
PPABP212	2-1/2"x 2-1/2"	864	30	35	36	32 Perf
PPABP358	3-5/8"x6"	128	18	20 Perf	16 Gap	10



## Square Cross Bottom Band Pots

Cross bottom pots. Sold by the case. Available in black.

\*\*\*Number of pots fit In a flat

Prod. Code	Size /Desc.	No. In Case	Wt. Case Lbs.	Heavy Duty***	17x17***	10x20***
PPAUB3916	3-9/16"x 4-1/4"	348	18	20 Gap	15 Gap	18 Perf
PPAUB358	3-5/8"x 6"	128	18	20 Perf	16 Gap	10
PPAUB278	2-7/8"x 5-1/2"	200	18	30	36 Perf	21 Gap
PPAUB238	2-3/8"x 5"	300	18	48 Perf	49 Perf	36
PPALLB238334	2-3/8" X 3 3/4"	350	13	48 Perf	49 Perf	36
PPAUB234	2-3/4"x 2-1/2"	672	24	30 Perf	36 Perf	21 Gap
PPAUB2789	2-7/8"x 9"	150	24	25 ea.	15-3/4" x 15-3/4" x 5"	
PPAUB4	4"x 10"	100	27	9 ea.	15-3/4" x 15-3/4" x 5"	



If purchasing a pallet, customers must have forlift for unloading



The HC Companies™  
Leader in Horticultural Containers



The HC Companies

Item No.	Item Description	case amt	Size	max liquid vol	Case wt
<b>Round Pots</b>			<b>(OD x Ht)</b>		
PPIDILSTG04000GR	STG04000B66K155 04.00 STG TW GREEN (1550/CS)	1550	4" X 3.5"	1.01 PT	54Lb
PPIPA.0800CL	PA.08000 8" PANTERRA POT CLAY	250	8.87" x 6"	2.83 qt	45Lb
PPIPA.1001CL	PA.09000 10" TRUE PANTERRA POT CL	100	10" x 7.75"	1.56 gal	26Lb
PPIPA.1200CL	PA.12000 12" PANTERRA POT CLAY	50	13.25" x 9.5"	3.35 gal	35Lb
PPIPAD0800CL	PAB08000 8" PANTERRA BOWL CL	250	8" x 3.87"	2.17 qt	30Lb
PPIPAD1200CL	PAB12000 12" PANTERRA BOWL CL	50	12" x 5.12"	1.59 gal	15Lb
PPIPAD1400CL	PAB14000 14" PANTERRA BOWL CLAY	50	14" x 5.75"	2.44 gal	25Lb
PPIPAP1600CL	PAP16000 16" PANTERRA OVAL CL	50	16.75" x 6"	1.97 gal	25Lb
PPIDILCDA12000*	CDA12000 12" CORDOVA POT	25	13" x 8.5"	3.14 gal	17Lb
PPIDILCDA14000*	CDA14000 14" CORDOVA POT	22	15" x 10"	5.20 gal	21Lb
PPIDILCPA10002CL	CPA10002 10.00 COLOR POT 3 TL CLAY	50	9.87" x 7.87"	1.67 gal	18Lb
PPIDILCPA12001CL	CPA12001 12.00 COLOR POT 2 TL CLAY	40	11.81" x 9.5"	2.87 gal	25Lb
PPIAZE0600GR	AZE06000 6" ELITE/ULTRA AZALEA GREEN	520	6" x 4.25"	1.4 qt	36Lb
PPIAZE07500GR	AZE07500 7.5" ELITE/ULTRA AZALEA	200	7.5" x 5.5"	2.73 qt	26Lb
PPIDILSTG03500GR	STG03500 3.5" TW TL GREEN	1225	3.5" x 3.25"	.57 pt	28lb
PPISTG04500GR	STG04500 4.5" GERANIUM TW GREEN	850	4.25" x 3.81"	1.26 pt	35lb
<b>Square Pots</b>			<b>(Sq X Ht)</b>		
PPIDILSVP03001	SVP03001 2/63" SQ DEEP VAC POT PRESSFIT BLACK	800	2.62" X 3.5"	9.47 fl oz	22Lb
PPISQK0400BL	SQK04005 4" KORD LITE SQ POT BLK	960	4" x 3.5"	1.36 ml	22Lb
PPISQL0550BL	SQL05505 5.5" KORDLOK SQ. BLACK	200	5.37" x 6.12"	2.11 qt	30Lb
PPIDILXSQ05500*	XSQ05500G18C200 2 QUART POT	200	5.25" x 6"	2 qt	26Lb
PPIDILSVP04501	SVP04501 4.13" SQ VAC POT PRESS FIT BLACK	375	4.12" x 3.62"	1.65pt	15lbs
PPIDILSVP0450D(375)	DSQVP45PF/D 4.13" SQ. DEEP VAC. POT PRESS FIT, BLACK	375	4.12" x 5"	1.2qt	20lbs
PPIDILSQL04501*	SQL04501 04.50 SQ DP PER TL TW	441	4.21" x 4.93"	1.03qt	35lbs



PPIDILSTG04000



PPIPA1001CL



PPIPAD12000



PPIDILCDA12000



PPIDILSQL05501



PPIAZE07500GR



PPISQK0400BL



PPIDILXSQ05500

Some items may be available in other colors. Call for availability and pricing. Other sizes may be available.

Note: A variety of decorative planters and hanging baskets, such as YWP13000 & YVH12000 may be available, call for pricing and lead time.

Call or go online for large quantity orders, additional info and current prices.



PPIHNI10000 & PPIHZP3LSNO



PPIDILHZS14HA0



PPIDILHSI12000GR



PPIDILCDA12000

Item No.	Item Description	case amt	Size	max liquid vol	Case wt
<b>Hanging Basket (hangers sold separately)</b>			<b>(OD x Ht)</b>		
PPIDILHSI08001GR	HSI080018.00 EURO SL HB GREEN	50	8" x 5.56"	3.23 qt	
PPIHNI10000	HNI10000 10" KORD SAUCERLESS HP W/D BLACK	100	10.75" x 6.75"	1.66 gal	32Lb
PPIHSI10001GR	HSI10001 10" EURO SL 2 HP W/DIV GREEN	50	10" x 6.12"	1.39 gal	30Lb
PPIHTS1000GR	HTS10000 10.75" TRAD HP W/ DIV GREEN	50	10.75" x 5.87"	1.47 gal	15Lb
PPIDILHSI12000GR	HSI12000 12.00 EURO SL HB GREEN	50	11.75" x 7.25"	2.39 gal	25Lb
PPIHNI1200GR	HNI12000 12" KORD SAUCERLESS HP W/WD GREEN	50	12.75" x 7.5"	2.74 gal	30Lb
PPIHTS1200GR	HTS12000 12" TRAD. HP W/DIV GR	50	13" x 7.5"	2.77 gal	30Lb
<b>Hangers 3 strand (use on 10" and smaller)</b>			<b>(Length)</b>		
PPIDILH2S.L210	HZS.L210...D050 3 WIRE HANGER	50	21"		2Lb
PPIHZP3LSNOGR25	HZP3LSNO 3-STRAND SNAP POLY HANGER GREEN	25	18"		0.7492Lb
<b>4 strand (use on 12" +)</b>					
PPIHZS.L240	HZS.L240...D050 4 WIRE HANGER	50	24"		0.18Lb
PPIHZP4LSNOGR25	HZP4LSNO 4-STRAND SNAP POLY HANGER GREEN	25	22"		2Lb
PPIDILHZS14HA0	HZS14HA0 14" METAL HOOP HANGER (22/CS)	22	25.5"		13Lb
<b>Inserts</b>			<b>(L x W x H)</b>		
PPIIKM0606DBL	IJA06065 606 DEEP INSERT BLACK	100	10" x 20" x 3.25"	1.16 qt	22Lb
PPIIKN0606BL	INA06060 TRADITIONAL 606 INSERT BLACK	100	10.5" x 21" x 2.25"	1.9 pt	22Lb
PPIIKN0804BL	INA08040 TRADITIONAL 804 INSERT BLACK	100	10.5" x 21" x 2.25"	1.37 pt	22Lb
PPIIKN0806BL	INA08060 TRADITIONAL 806 INSERT BLACK	100	10.5" x 21" x 2.25"	1.29	pt
PPIIKN1204BL	INA12040 1204 STANDARD INSERT BLACK	100	10.5" x 21" x 2.25"	.36 qt	22Lb
PPIIKN1801BL	INA18010 1801 STANDARD INSERT BLACK	100	10.5" x 21" x 2.25"	9.81 fl oz	20Lb
PPIDILINA08010	ITML INA08010 D801 INST BLACK	100			17Lb
<b>Trays/Flats</b>			<b>(L x W x H)</b>		
PPITND1020T	TND10200G18D050 DAISY WEB TRAY BLACK	50	10.75" x 21" x 2.38"		15Lb
PPITVA11210	TVA11210 DVF1020 FLAT BLACK W/HOLES	100	10.5" x 21" x 2.37"		27Lb
PPITVA11210J	TVA11210J DVF1020 FLAT BLACK NO HOLES	100	10.5" x 21" x 2.37"		27Lb
PPITVF1020	TRUE TVT10201 BLACK W/HOLES (smaller 10x20 tray)	100	10" x 20" x 2.62"		27Lb



PPIIKN1204BL  
INA12040



PPITVT1020



PPITND1020T

Other sizes/styles may be available. Call for quote.

Item No.	Item Description	qty bundle/ qty pallet	dimensions	volume (gal/qt)
<b>Blow Molded</b>				
PPIPCBMS03000	PROCAL BMS03000 ELITE 300 SQ NURSERY POT BLOW MOLD	(60/10080)	6-1/2" x 6-3/8"	2.49Qt.
PPIPCBM.03000	PROCAL BM.03000 ELITE 300 NURSERY POT BLOW MOLD	(60/10440)	6-1/2" x 7"	3.00Qt.
PPIPCAMK0600	PROCAL AMK06000 ELITE NURSERY POT BLOWMOLD	(60/5400)	8-1/2" x 8-1/2"	1.6 G
PPIAMK10000	PROCAL AMK10000 ELITE NURSERY POT BLOWMOLD	(50/4400)	10" x 9"	2.33 G
PPIPCAMK12000	PROCAL AMK12000 ELITE NURSERY POT BLOWMOLD	(50/3000)	11" x 9-5/8"	3 G
PPIPCBWS0005	PROCAL BWS00050G18D028 WHITERIDGE BLOWMOLD	(28/1008)	13-3/4" x 9"	20 Qt.
PPIPCBWS0007	PROCAL BWS00070 WHITERIDGE BM 7 SQUAT	(25/800)	16" x 11-5/8"	7.5 G
PPIPCBW.0007	PROCAL BW.00070G18D028 WHITERIDGE BLOWMOLD	(28/1008)	13-3/4" x 12"	6.52 G
PPIPCBW.0010	PROCAL BW.0010 WHITERIDGE BM 10 TALL	(25/800)	16" x 15-3/8"	10 G
PPIPCBW.0015	PROCAL BW.0015 WHITERIDGE BM 15	(15/450)	18" x 15-3/4"	15 G
PPIPCBWS0020	PROCAL BWS0020 WHITERIDGE BM 20	(5/340)	23-3/4" X 14"	87 Qt
PPIPCBW.0025	PROCAL BW.00250G18D005 WHITERIDGE BM 25	(5/240)	23" x 17"	26.5 G
PPIPCBW.0045	PROCAL BW.00450G18E001 WHITERIDGE BM 45	(1/106)	30-3/4" x 20"	45.15 G
PPIPCBW.0065	PROCAL BW.0065 WHITERIDGE BM 65	(1/96)	32" x 24"	61.01
<b>Thermoformed</b>				
PPIPCTFT001G0G18B052	PROCAL TFT001G0G18B TRUE 1GAL THERMO	(50/5070)	7-7/8" x 7-1/4"	1 G
PPIPCTFT002G0G18B035	PROCAL TFT002G0G18B035 TRUE 2GAL THERMO	(50/3500)	9-1/2" x 9-1/4"	2 G
PPIPCTFT003G0G18B26	PROCAL TFT003G0G18B26 TRUE TALL 3GAL THERMO	(25/2500)	10-1/2" x 11-3/4"	3 G
<b>Injection Molded</b>				
PPIPCNBB005G0	PROCAL #5 NBB005G0G18D025 5 GAL BTM DRAIN POT	(10/1440)	11" x 12-1/8"	3.67 G
PPIPCNSR007G0	PROCAL NSR007G0G18E600 07.00 GAL NURSERY POT	(1/600)	12-3/4" x 14-1/2"	6.20 G
PPIPCNSR010G0	PROCAL NSR010G0G18E486 10.00 G SD DRAIN NSY POT	(1/486)	16-1/2" x 15"	9.50 G
PPIPCNSS007G1G18E675	NSS007G1G18E (IMPRINT: 7SQSPC) 7 GAL SQUAT POT	(1/675)	14-1/4" x 11-1/2"	5.90 G
PPIPCNSS010G0G18E396	PROCAL NSS010G0G18E 10.00 G SQUAT NURSERY POT	(1/396)	18" x 12"	9.64 G
PPIPCNSS015G0G18E360	PROCAL NSS015G0G18E360 15.00 G SQUAT NSY POT #15 TUB	(1/360)	18" x 15"	12.7 G
PPIPCNSS020G0G18E216	PROCAL NSS020G0G18E 20.00 G SQUAT INJ #20 CAN	(1/216)	22" x 17"	19.70 G



PPIPCTFT002G0



PPIPCNSS015G0



PPIPCBW.0045



PPIPCBWS0007



PPIPCBM.03000

Call or go online for large quantity orders, additional info and current prices.





Item No.	Item Description	Case Qty	Width x Length
<b>Inserts</b>			
PPEJA1201	EAST JORDAN A12-01 A SERIES INSERTS	(200/CS)	10-7/8" x 21-1/4"
PPEJA1801	EAST JORDAN A18-01 A SERIES INSERTS	(200/CS)	10-7/8" x 21-1/4"
PPEJA1204	EAST JORDAN A12-04 A SERIES INSERTS	(200/CS)	10-7/8" x 21-1/4"
PPEJA1204	EAST JORDAN A12-06 A SERIES INSERTS	(200/CS)	10-7/8" x 21-1/4"
PPEJA1206	EAST JORDAN A24-01 A SERIES INSERTS	(200/CS)	10-7/8" x 21-1/4"
PPEJPA2401	EAST JORDAN A6-06 A SERIES INSERTS	(200/CS)	10-7/8" x 21-1/4"
PPEJPA801	EAST JORDAN A8-01 A SERIES INSERTS	(200/CS)	10-7/8" x 21-1/4"
PPEJPA806	EAST JORDAN A8-06 A SERIES INSERTS	(200/CS)	10-7/8" x 21-1/4"
<b>Shuttle Pots and Trays</b>			
			Diameter x Height
PPEJPSP650GR	EAST JORDAN SP 650 6-12" SHUTTLE POT, GREEN	(300/CS)	6.7" x 5.875"
PPEJPSP750BK	EAST JORDAN SP 750 SHUTTLE POT, BLACK	(240/CS)	7.5" x 5.625"
PPEJPSP800AGR	EAST JORDAN SP 800A SHUTTLE POT, GREEN	(210/CS)	8" x 6"
PPEJPSS265K	EAST JORDAN SS 265 SQUARE SHUTTLE POT	(2430/CS)	2.6" x 3.25"
			Width x Length
PPEJPST43315BK	EAST JORDAN ST 433-15 SHUTTLE TRAY 15 PACK, BLACK	(50/CS)	12-3/8" x 21-3/4"
PPEJPST6006RBK	EAST JORDAN ST 600-6 (R) SHUTTLE TRAY, BLACK	(100/CS)	12" x 18"
PPEJPST650BK	EAST JORDAN ST 650-6 SHUTTLE TRAY 6 PK, BLACK	(50/CS)	13-1/8" x 19-3/4"
PPEJPAF312PCTD	EAST JORDAN AF 3 1/2" PC STD POT CARRIER TRAY	(100/CS)	10-7/8" x 21-1/4"
PPEJPPCSS26532	EAST JORDAN PC SS 265-32 SHUTTLE TRAY	(100/CS)	10-7/8" x 21-1/4"
<b>Flats</b>			
PPEJPWA1121HD	EAST JORDAN WA 1121 HD A-SERIES OPEN HD WEB FLAT	(50/CS)	10-7/8" x 21-1/4"
PPEJPWT1020	EAST JORDAN WT 1020 HD T-SERIES OPEN WEB FLAT	(25/BN)	9-7/8" x 19-7/8"
PPEJPAFGERMF	EAST JORDAN AF GERMINATING FLAT (1-1/4" DEEP), NO HOLES	(100/CS)	10-7/8" x 21-1/4"
PPEJPAFHF	EAST JORDAN AF HALF FLAT STD	(200/CS)	10-7/8" x 10-7/8"
<b>Plant Rings</b>			
PPEJPPR650700	EAST JORDAN PR-650/700 PLANT RING FOR 6"-7" POTS	(1250/CS)	N/A
PPEJPPR750800	EAST JORDAN PR-750/800 PLANT	(1250/CS)	N/A





## Blackmore Trays

All trays are 10" x 20" industry standard (10.5" x 21" actual outside measurement)  
If "T" or "True" designation in item #, actual outside measurement is 10" x 20"

Item No.	Blackmore #	Item Description	Bundle Qty/Pallet Qty	cell count	compatible pot
<b>Carry Trays</b>					
PPBMR18EA	80160	TRAY DR STANDARD=R18	(220/1760)	18 ct	tray fits 3.5' pots
Item No.	Blackmore #	Item Description	Bundle Qty/Pallet Qty	Height	Cell (cubic inches)
<b>Cell Trays</b>					
PPE10CT80	81370	10 COUNT FOR 80MM	(1980)	3.5"	39
PPE1801JT	81260	18-01 JUMBO TRAY-STACKABLE	(150/1200)	2.75"	29
PPE2165	81580	21 COUNT TRAY 65mm	(1440)	2.75"	18
PPE32SJT	88370	32 STACKABLE TRAY	(200/1600)	1.625"	7.4
PPE32EXDEEP	89050	32 EXTRA DEEP	(140/1120)	4"	19
PPE32DEEP	88810	32 DEEP TRAY FOR 50mm	(200/1600)	2"	14
PPE50D45	88890	50 DEEP TRAY 45mm	(180/1440)	1.75"	9.8
PPE50OCTVT	87960	50 OCTAGON VENTED TRAY 40mm	(220/1600)	1.625"	5.2
PPE035MMT	88460	50 BLACKMORE FOR 35mm	(200/1600)	1.625"	4.5
PPE50STARD	88830	50 STAR DEEP TRAY 40mm	(140/1120)	2"	6.15
PPE72ST	88210	72 30mm TRAY	(220/1760)	1.625"	2.9
PPE7235T	88350	72 35mm TRAY	(200/1600)	1.625"	4
PPE7235DT	88750	72 35mm DEEP TRAY	(180/1440)	2.5"	6
PPE84OCTT	88640	84 OCTAGON TRAY	(200/1600)	1.625"	1.75
PPE102BUT	88720	102B UN CUT TRAY	(220/1760)	1.625"	1.75
PPE251MST	89070	2-51 (102 count) STRIP TRAY	(1440)	1.625"	1.75
PPE105OCTT	87940	105 OCTAGON TRAY	(220/1760)	1.625"	0.18
PPBM8706	87060	128 SQUARE TRAY NO CENTER RIBS	(200/1600)	2"	1.75
PPE128ST	87040	128 OCT. STANDARD TRAY	(200/1600)	1.625"	1.75
PPE128D	88850	128 DEEP EARTH POT TRAY	(180/1440)	2"	1.9
PPE144OCTVT	87910	144 OCTAGON VENTED TRAY	(220/1760)	1.625"	1.3
PPBM8845	88450	162 OCTAGON VENT TRAY	(200/1600)	1.625"	1.3
PPE209ST	88620	209 STANDARD TRAY	(200/1600)	1.5"	1.2
PPBM8726	87260	288 OCTAGON TRAY	(220/1760)	1"	0.375
PPM8729	87290	288 XCE DEEP PLUG TRAY	(220/1760)	1.5"	0.585
PPBM87400	87400	512 XCE PLUG TRAYS	(220/1760)	7/8"	0.18





### The Custom® (Blow Molded)

The Custom™ is our economy line of blow-molded containers. This container is designed to get your plants to market efficiently. All Nursery Supplies blow-molded containers carry a 2-year guarantee and some are available with smooth sides.



Prod. Code	Trade-Size	D(ID)	H	CCY	CI	GAL	L	PPS	Wt. Bndl
PPNSC300S	#1	6-3/4	6-1/2	300	155.9	.68	2.6	75	10
PPNSC300	#1	6-3/4	7	270	173.2	.75	2.8	75	10
PPNSC400	Full #1	7	7	210	225.2	.98	3.7	77	11
PPNSC550	Large Mum Pot	9	6	166	280.6	1.2	4.6	100	16
PPNSC600	#2	9	8 1/2	125	374.6	1.6	6.1	60	11
PPNSC1000S	—	10	7-3/4	104	450.0	1.9	7.4	75	17
PPNSC1000	Foliage Pot	10	9	90	526.0	2.3	8.6	68	18
PPNSC1200S	—	11	7-1/2	89	522.0	2.3	8.6	52	19
PPNSC1200	#3	11	9-1/2	70	699.0	2.9	10.8	45	18
PPNSC2000	#5 Handles	12	11 1/4	50	945.0	4.1	15.5	44	20
PPNSC2800	#7 Squat Handles	14	11-1/2	35	1,337.0	5.8	21.9	45	29

### Grip-Lip® Containers / Econo-Grip®

Grip-Lip containers are designed to provide maximum stacking and shipping strength. They ease the strain of maneuvering plants and trees because the lip becomes a rigid handle. The Econo-Grip® is an economical container with the same great features as the Grip-Lip.



Prod. Code	Trade-Size	D(ID)	H	CCY	CI	GAL	L	PPS	Wt. Bndl
PPNSEG2800	#7	13 3/4	12	31	1,502.0	6.5	24.6	40	33
PPNSGL2800	#7	13 3/4	12	31	1,502.0	6.5	24.6	40	45
PPNSEG6900S	#15 Squat	17 1/4	12 1/4	19	2,492.0	10.8	40.9	19	31
PPNSGL6900S	#15 Squat	17 1/4	12 1/4	19	2,492.0	10.8	40.9	19	45
PPNSEG6900	#15	17 1/4	15 1/4	14	3,049.0	13.2	50.0	18	32
PPNSGL6900	#15	17 1/4	15 1/4	14	3,049.0	13.2	50.0	18	41
PPNSEG8000	#20	19 1/2	17	10	4,520.0	19.6	74.2	16	38
PPNSGL8000	#20	19 1/2	17	10	4,520.0	19.6	74.2	16	51
PPNSEG10000	#25	22 3/4	18 1/4	7	6,373.0	27.6	104.5	10	33



PPTO700003C



PPTO710245C



PPTOPT720568C



PPTO705165C



PPTO760549C



PPTOPT12572

## Trays & Inserts

Vacuum-formed plastic products including a full line of containers from flats to inserts, plug trays to propagation trays, and pots to specialty items.

### Other T.O. products available upon request.

Item No.	Item Description	qty/cs	Case Weight	Size	Volume (dry cu in)
<b>SQUARE POTS</b>					
PPTO700003C	#700003C SVD-250-BLACK SQUARE POT	800	11Lb	2.6" SQX3.44 DEEP	14.46
PPTO700062C	#700062C SVD-450-BLACK SQUARE POT	500	26Lb	4.2" sq X 4.91" deep	65.42
<b>CARRY TRAY</b>					
PPTO705165C	#705165C SPT-450-15-PF SQ POT CARRY TRAY	50	22Lb	12.88" x 21.19" x 2.13"	hold 15 of the 450 pots
<b>DOMES</b>					
PPTO760549C*	#760549C ST-F-1020 CLEAR DOME	50 & each	17Lb	11" x 21.5" x 2.1"	CLEAR DOME (LID)
<b>OPEN TRAY</b>					
PPTO710245C	#710245C ST-F-1020-open w/holes	100	17Lb	10.94" x 21.44" x 2.44"	open flat
<b>PLUG TRAYS</b>					
PPTO720562C	#720562C PL-038-STAR-DEEP 5" PLUG TRAY	25	15Lb	10.94" x 21.44" x 5"	13.43
PPTO720695C	#720695C S-PL-SR-50-3-VH SURE ROOT TRAY	25	22Lb	10.94" x 21.44" x 3"	7.03
PPTO720697C	#720697C S-PL-SR-50-3-HW-VH SURE ROOT TRAY	25	22Lb	10.94" x 21.44" x 3"	6.71
PPTOPT720568C	#720568C PL-050 STAR DEEP 4.5" PLUG TRAY	50	34Lb	10.94" X 21.44" X 4.5"	8.66
PPTOPT12865	#720580C PL-072-STAR DEEP 3" PLUG TRAY	50	19Lb	10.94" X 21.44" X 3"	4.27
PPTOPT720487C	#720487C PL-128-PLUG TRAY	100	39Lb	11" X 21.22" X 2.12"	1.16
PPTO720544C	#720544C S-PL-512CE-SQ-NET-VH 512 TRAY	50	19Lb	11" x 21.22" x 1"	0.24
<b>PROPAGATION TRAYS</b>					
PPTOPT12550	#725602C PROP-50 TRAY	100	22Lb	10.56" X 21.06" X 2.31"	4.88
PPTOPT12572	#725607C PROP-72 TRAY	100	22Lb	10.56" X 21.06" X 2.31"	2.5



## Vented Dome

These domes fit into the standard 10"x20" trays to create a humid and warm environment ideal for cuttings and seed germination. Tall 7.5" dome gives extra height for your taller cuttings. Adjustable vents allow for perfect humidity and temperature control.

PPDVDOME7 PARSOURCE 7.5" VENTED DOME 25 per case but also sold individually



## Sabert Dura Pots

Economical Dura-Pots are made from durable polyethylene and come in 4 standard sizes. All sizes available in black. They are flexible for easy de-potting with rounded edges to prevent cuts. Pots are sold by the case. Call 1-800-477-4744 for information. (Formerly "Gage" Dura Pots)

Prod. Code	Width	Depth	Inside Diameter (in)	Volume	Inside Diameter (cm)	Volume (cc)	No. In Case	Case Wt. Lbs.
*PPG350	3-7/16"	3-1/4"	3.38	30.0	8.57	491.7	1,500	25
*PPG311	3-11/16"	3-3/8"	3.45	35.0	8.76	573.7	1,500	27
**PPG4	4"	3-3/8"	3.90	46.0	9.91	753.9	1,500	29

\* 24 cases per pallet

\*\* 28 cases per pallet

## Amaroo Specimen Tree Boxes

These reusable containers feature root directors to avoid root circling and air vents for ample drainage and root pruning. Easy assembly/disassembly and a 4-way fork-liftable base saves labor.

Customized options are available, including: Drainage vents, Multiple colors and Customer name/phone number. Call for more details.

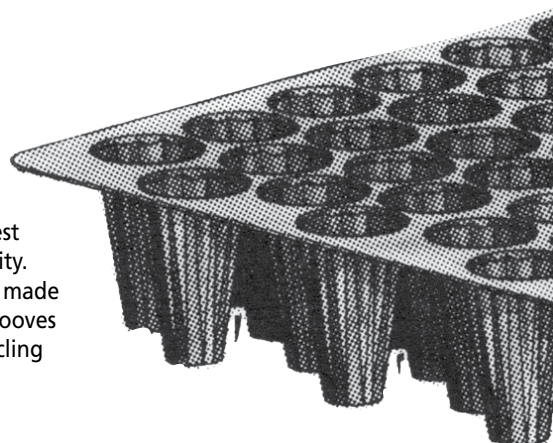


Prod. Code	Description	Inside Top	Inside Bottom	Outside Top	Outside Bottom	Inside Depth	Empty Weight	Pallet Qty.	Truck Qty.
PPTB16	16' (12 Gal)	16.5"	11.5"	N/A	N/A	15.5	7 lb.	180	4680
PPTB21	21" FB (25 Gal)	21.5"	17.5"	24.5"	18.5"	16.5"	10.5 lb.	111	2886
PPTB24	24" FB (35 Gal)	23"	17.5"	25"	18.5"	21.5"	12.5 lb.	80	2080
PPTB24D	24" Octagon	22.5"	17.5"	25"	18.5"	21"	12.5 lb.	80	2080
PPTB31	31" R (75 Gal)	31"	22.5"	34.5"	26"	22.5"	40.0 lb.	16	624
PPTB36	36" R (125 Gal)	35.5"	22.5"	38.75"	26"	32"	60.0 lb.	8	480
PPTB36S	36" S (130 Gal)	36"	28.75"	39.5"	32"	25.5"	40.0 lb.	14	672

## Growing Systems Growing Trays

Growing trays are available in many sizes and styles to match a wide variety of needs from flowers and tree seedlings to vegetables and more. Manufactured from the highest quality virgin resins. Special modifiers have been added and designed for great durability. Drainage holes are clearly punched and are available in several diameters. All trays are made of high-impact polystyrene, and measure 10" x 20". The Groove Tube Tray has sharp grooves extending the length of the cell wall to the bottom of the tray. This eliminates root circling prior to air pruning. Other sizes and types of trays available. Sold by case.

Call 1-800-477-4744 for price information.



Prod. Code	Description	Cell Size: Diameter x Depth	Size: Drain Hole	Gauge	Case Wt. Lbs.	Qty. Case
PPGSF135	Growing tray	1-1/8" x 1-1/2"	9/16"	24	24	100
PPGSGT38D	Deep groove tube	2-1/4" x 5"	13/16"	45	24	50
PPGSGT51D	Deep groove tube	1-7/8" x 3-1/2"	11/16"	30	15	50
PPGSGT73	Groove tube	1-1/2" x 2-3/4"	11/16"	24	24	100
PPGSTT96	Tube tray	1-3/8" x 2 1/2"	1/4"	30	30	100
PPGSGRT73	Growing tray	1-1/2" x 2-3/4"	11/16"	24	24	100
PPGSGRT7314	Growing tray	1-1/2" x 2-3/4"	1/4"	24	24	100



**Standard Color options : Black, green, red, brown and navy all rated at 4-5 years**



Fabric planting containers made from plastic recycled water bottles allow roots to cool in the summer and provides insulation in the winter. Breathability of fabric makes better use of water and better drainage for stronger, healthier starts and decreases risk of transplant shock.

**Product code: PPRP\***

Prod. Code	Description
PPRP01BLK	ROOT POUCH 1 GAL. THIN BLACK (50/3500)
PPRP02BLK	ROOT POUCH 2 GAL. THIN BLACK (50/2200)
PPRP03BLK	ROOT POUCH 3 GAL. THIN BLACK (50/1800)
PPRPHEDEXS	ROOT POUCH HEDGE POT XS HEATHER GREY (10/300) SQUARE, 1 STRAP

SIZE	Liter size	Dimensions in Inches	Units per pack	Units per Bale
1 gal	3.8	6w x 7 1/2h	25	1800
1 gal w/handle			10	1800
2 gal	8	8 1/2w x 8 1/2h	25	1200
2 gal w/handle			10	1200
3 gal	12	10w x 8 1/2h	25	900
3 gal w/handle			10	900
5 gal	16	11w x 10 1/4h	10	750
5 gal w/handle			10	550
7 gal	30	14w x 11 3/4h	10	540
7 gal w/handle			10	420
10 gal	39	16w x 12h	10	400
10 gal w/handle			10	320
15 gal	56	17w x 15h	10	350
15 gal w/handle			10	300
20 gal	78	19 7/8w x 15 7/8h	10	280
20 gal w/handle			10	240
25 gal	95	21w x 16.5h	10	240
25 gal w/handle			10	240
30 gal	113	24w x 16.5h	10	200
30 gal w/handles			10	200
35 gal	127	23 1/2w x 17 7/8h	10	200
35 gal w/handle			10	200
45 gal	170	27w x 18h	10	180
45 gal w handles			10	180
65 gal	246	32w x 18h	10	140
65 gal w handles			10	140
100 gal	378	38w x 20h	5	110
100 gal w handles			5	110
150 gal	567	45w x 22h	5	80
150 gal w handles			5	80
200 gal	757	50w x 24h	5	70
200 gal w handles			5	70
250 gal	946	55w x 24h	5	60
250 gal w handles			5	60
300 gal	1135	60w x 24h	5	55
300 gal w handles			5	55
400 gal	1514	70w x 24h	5	45
400 gal w handles			5	45
500 gal	1892	80w x 24h	5	35
500 gal w handles			5	35
600 gal	2271	90w x 24h	5	30
600 gal w handles			5	30



*Grey (3-4 year)  
Ideal for nursery growers*



*Brown (4-5 year)  
Great for above ground or  
pot-in-pot systems*



*Black (4-5 years)  
Semi-degradable fabric, great  
for multiple uses!*



*Thin Black (12-18 months)  
Use in propagation and  
ebb & flow applications*

**Available with or without handles. Call for availability and lead-time.**

**Call or go online for large quantity orders, additional info and current prices.**



## Al's Flower Pouch

Designed to maximize space, it can be hung on walls, decks, lamp posts, around swimming pools, on balconies or under gutters. Precut slits for planting rootballs. Made of green recyclable plastic.

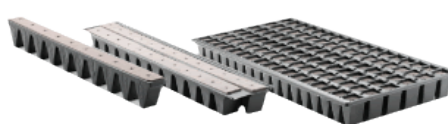
Prod. Code	Description	Unit of Meas.	Wt/Lb
PPFPE	6L 8.5"x 20", 10 slits	25/BNDL	1
PPFPC	6L 8.5"x 20", 10 slits	250/cs	10
PPFPME	4L 8.5"x 13.5", 6 slits	25/BNDL	0.5
PPFPMC	4L 8.5"x 13.5", 6 slits	250/CS	5



PPOSMO5010



PPOSMO5213



PPOSMO5625 / PPOSMO5615

## Oasis Grower Products



Prod. Code	Description	Size	Cells
PPOSMO5010	#5010 Rootcubes	1¼" Medium	104 cells/sheet (20 sheets/case)
PPOSMO5231	#5231 Hortcubes	1" Thin Cut Medium	76 cells/sheet (20 sheets/case)
PPOSMO5625	#5625 Wedge	34 Ct. Dbl strip	72 strips/case
PPOSMO5615	#5615 Wedge (Medium Only)	Refill for 5625, 5641, 5643	120 strips/case

## Brown Kraft Paper Pot Sleeves

All natural brown kraft paper pot sleeves. Other sizes available by request. Sold by the case.

Prod. Code	Pot Size	Sleeve Ht.	Bottom Opening	Top Width	Wt./Cs./Lbs.	Qty. Case*
MSPS618	6"	18"	7-¼"	16"	25	500
MSPS6520	6 – 6-1/2"	20"	8"	16"	27	500
MSPS8530	8 – 8-1/2"	24"	11"	30"	51	500



## Vibro Motor Hand Seeder

A seeding tool designed for small and medium-sized growers as well as home gardeners.

Prod. Code	Description	Wt. Lbs.
MSMHS	Hand Seeder	1
MSMHPSA2	Power Supply Adapter to replace battery	N/A
MSMHSTM3	Tip Magnifier	N/A

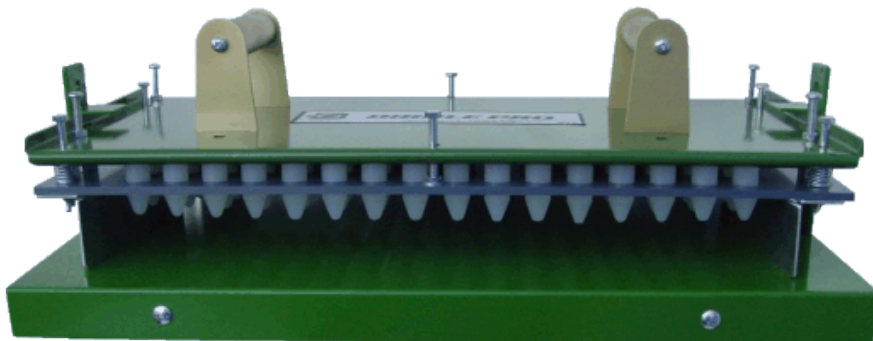


## Evergreen Vacuum Seeder

This seeder is light weight and very simple to use. This seeder self centers itself over top of the plug tray, for accurate seed location. Change seed plates and locator frames for different plug tray formats in seconds. Seed plates are made specific for seed sown. Plants most vegetable, flower and tree seed.

Prod. Code	Description
MSEVS	Evergreen Vacuum Seeder (includes one plate)
MSEVSEP	Evergreen Vacuum Seeder Extra Plate (no seeder)
MSEVSLF	Evergreen Vacuum Seeder Locating Frame (no seeder)

## Dibble Pro and Mate



Dibble Pro

- Aluminum Uni-Body Construction
- Plastic (1/2" – 1" diameter)
- Aluminum Pins (1/8" – 1/4" diameter)
- Automatic Stripper Plate
- Durable Anodized Finish
- Makes A Perfect Dibble Every Time
- Use For Plugs or Cuttings
- Adjustable Depth Control
- Dibble Mate Stand Available



Dibble Mate Stand

The dibble mate stand is sold separately. This is a great option for ergonomic use with the dibble pro.

## Antal/Cayson Plug Popper

The Plug Popper dislodges your plugs from their tray in a matter of seconds. No more broken stems or damaged roots. This indispensable horticultural tool works with a simple foot-pedal operation.

No cords, hoses or motors to maintain. The Plug Popper is easy to use and handles any tray with the swap of an insert. Try it for yourself! You will find that this heavy-duty workhorse pays for itself in a single season.

**Each unit is custom made for your growing needs!**



Plug Popper



**- A -**

Acme Gravity Flow Spreader . . . . . 42  
 AgroFabric . . . . . 64  
 All-Weather Paper . . . . . 27  
 Al's Flower Pouch . . . . . 77  
 Amaroo Tree Boxes . . . . . 7, 75  
 Ames Tools . . . . . 20-22  
 Anderson Die Plastic Pots . . . . . 66-67  
 Anti-drip Compound . . . . . 56  
 ARS Tools . . . . . 16

**- B -**

B & B Supplies . . . . . 4-8  
 Back Pack Sprayers . . . . . 44  
 Bahco . . . . . 15  
 Baler Twine . . . . . 6  
 Bamboo Cane Stakes & Trellis . . . . . 14  
 Barnel Pruners . . . . . 16  
 Basket Liners . . . . . 6  
 Bastard File . . . . . 7  
 Batten Tape . . . . . 57  
 Bedding Pot Labels . . . . . 24, 26-27  
 Benches, Conley . . . . . 51  
 Bench Top Materials . . . . . 57  
 Bench Wire . . . . . 57  
 Binding Tape Tie Down . . . . . 57  
 Biotherm . . . . . 52  
 Bird Netting . . . . . 28  
 Bird Scare Tape . . . . . 11  
 Black Plastic Mulch . . . . . 62  
 Blades, Max . . . . . 11  
 Bonsai & Craft Scissors . . . . . 16  
 Brushking Shearing Knives . . . . . 28  
 Budding Strips . . . . . 13  
 Burlap Squares & Liners . . . . . 6  
 Blackmore Trays . . . . . 72

**- C -**

Calipers . . . . . 8  
 Carts . . . . . 7, 46  
 Chainlock . . . . . 9  
 Check Valves . . . . . 43  
 Chemical Accessories . . . . . 44-45  
 Chemical Sprayers . . . . . 44  
 Chip Budding Tape . . . . . 10  
 Christmas Tree Supplies . . . . . 28  
 Circulation Fans . . . . . 56  
 Closure Strips . . . . . 59  
 Coco Fibre . . . . . 38  
 Cold Frame Greenhouses . . . . . 47-49  
 Conley Benches . . . . . 51  
 Conley Greenhouses . . . . . 50-51  
 Containers . . . . . 65-75  
 Container Cart . . . . . 7  
 Controllers & Instruments, Greenhouse . . . . . 52-54  
 Convection Tube, Fan . . . . . 54  
 Convection Tube Hangers . . . . . 55  
 Cooling Pads & Systems . . . . . 54  
 Corona Sharpening Tool . . . . . 13, 28  
 Corona Tools . . . . . 17  
 Coveralls, Spray . . . . . 44  
 Cowhide Driver Gloves . . . . . 45  
 Credit Application . . . . . 81  
 Crimper, Wire . . . . . 7  
 Crop Covers . . . . . 64

**- D -**

Delivery Schedule . . . . . 3  
 Desktop Printer . . . . . 25  
 Dillen . . . . . 68-69  
 Dip n Grow . . . . . 41  
 Doc Farwell's Tree Seal . . . . . 12  
 Dome (for 10x20 tray) . . . . . 74  
 Doors . . . . . 51  
 Dos-A-Cart . . . . . 43  
 Dosatron Fertilizer Injectors . . . . . 43  
 Dramm Syphonjet . . . . . 42  
 Dramm Hoses . . . . . 34  
 Dramm Watering Supplies . . . . . 31-34  
 Dribble Rings . . . . . 32  
 Driver Gloves, Cowhide . . . . . 45  
 Dura-Bench Bench Top . . . . . 57  
 Dramm Sprayers & Foggers . . . . . 31

**- E -**

EARTHPOTS . . . . . 37  
 East Jordan Plastics . . . . . 71  
 Econet . . . . . 61  
 Environmental Controls . . . . . 52  
 Erosion Net Staples . . . . . 62  
 Erosion Netting . . . . . 62  
 Exhaust Fans, Shutters . . . . . 54  
 E-Z Feeder Applicator . . . . . 42  
 Electronic Leaf . . . . . 29  
 Evergreen Vacuum Seeder . . . . . 78

**- F -**

Fans . . . . . 54, 56  
 Farm Tools . . . . . 20-21  
 Felco Pruning Shears & Saws . . . . . 18-19  
 Fertile Dispenser . . . . . 42  
 Fertilizer Applicators . . . . . 42  
 Fertilizer Injectors . . . . . 43  
 Fertilizers . . . . . 38  
 Fiberglass Staker . . . . . 14  
 File, Mill Bastard . . . . . 7  
 Filters . . . . . 41  
 Flagging Tape . . . . . 11  
 Flag Stakes . . . . . 11  
 Flats . . . . . 66, 69, 71  
 Flat Wire Baskets . . . . . 4  
 Flower Pouches, Al's . . . . . 76  
 Fogg-It Water Nozzles . . . . . 33  
 Frost Protection . . . . . 64

**- G -**

Gage Dura Pots (see Sabert) . . . . . 75  
 Gilmour Water Hose . . . . . 35  
 Geodisc . . . . . 61  
 Gilmour Watering Products . . . . . 35  
 Glove Liner, Cotton . . . . . 45  
 Gloves . . . . . 45  
 Goggles & Glasses . . . . . 44  
 Grafting & Budding Knives . . . . . 12  
 Grafting Seals . . . . . 12  
 Greenhouse Accessories . . . . . 52-59  
 Greenhouse Computer Controls . . . . . 52  
 Greenhouse Controls . . . . . 52  
 Greenhouse Films . . . . . 60  
 Greenhouse Heating Systems . . . . . 52-53  
 Greenhouse, OBC . . . . . 47-49  
 Greenhouse Parts . . . . . 55

Greenhouses, Conley . . . . . 50-51  
 Greenhouses, OBC . . . . . 47-49  
 Greenhouse Zippers . . . . . 58  
 Gripper Gloves . . . . . 45  
 Ground Cover . . . . . 62-63  
 Growing Systems Trays . . . . . 75  
 Gutter-Connect Greenhouses . . . . . 50-51

**- H -**

Hand Tools . . . . . 20-22, 73  
 Hanging Baskets . . . . . 65, 69  
 Harrell's Fertilizer . . . . . 40  
 HC Products . . . . . 68-70  
 Heater Hangers . . . . . 55  
 Heating Systems . . . . . 52, 53  
 Hedge Shears . . . . . 15-17  
 Hoes . . . . . 21  
 Hog Ring Stapler . . . . . 8  
 Holsters . . . . . 19  
 Honing Oil . . . . . 13  
 Horizontal Air Flow Fans . . . . . 56  
 Hormex Rooting Compound . . . . . 41  
 Hose & Accessories . . . . . 32-35

**- I -**

Impress-O-Tags . . . . . 23  
 Inflation Blowers . . . . . 58  
 Inflation Kit, Outside Air . . . . . 58  
 Inflation Kit, Retro Fit . . . . . 58  
 Injectors . . . . . 43  
 Insect Bug Screen . . . . . 61  
 Insect Trap . . . . . 41  
 Inserts . . . . . 69, 71, 74  
 Insta-Ties . . . . . 9  
 Irrigation Shovels . . . . . 20  
 Irrigation Supplies . . . . . 32-35  
 ITML . . . . . 68-69

**- J -**

Jack's Fertilizers . . . . . 40  
 Jersey Gloves . . . . . 45  
 Jumper Hose . . . . . 58  
 Jute Erosion Netting . . . . . 60

**- K -**

Kleen Guard Coveralls . . . . . 49  
 Knives . . . . . 8, 12, 28  
 Kraft Pot Sleeves . . . . . 76

**- L -**

Label Printing . . . . . 25  
 Labels . . . . . 23-27  
 Landscape Rakes . . . . . 21  
 LB White . . . . . 53  
 Liner, Glove, Cotton . . . . . 45  
 Link4 . . . . . 52  
 Load Divider Netting . . . . . 28  
 Loppers . . . . . 17, 19  
 Lubricant Spray . . . . . 19

**- M -**

Marking Pens . . . . . 26  
 Max Tape Products . . . . . 10-11  
 Microgrow . . . . . 52  
 Moss, Peat . . . . . 38  
 Moss, Tree . . . . . 63  
 Mounting Bracket, Fan . . . . . 58

**- N -**

Nails, Pinning . . . . . 8  
 Nitrile Gloves . . . . . 45  
 Neoprene Gloves . . . . . 45  
 Netafim . . . . . 30  
 Netting, Erosion . . . . . 62  
 Netting Staples . . . . . 62  
 Nursery Carts . . . . . 46  
 Nursery Containers . . . . . 62-73  
 Nursery Labels . . . . . 23-27  
 Nursery Squares . . . . . 4  
 Nursery Stakes . . . . . 14  
 Nursery Supplies Containers . . . . . 69  
 Nylon Sling . . . . . 7

**- O -**

OBC Greenhouse . . . . . 47-49  
 Oasis Grower Products . . . . . 77  
 Okatsune Shears . . . . . 15

**- P -**

Pack-It Tree Tote . . . . . 7  
 Paper Pot Sleeves . . . . . 77  
 Peat Moss . . . . . 38  
 Pens, Nursery . . . . . 26  
 Perfect-A-Feed Applicator . . . . . 42  
 Perlite . . . . . 58  
 Permanent ID Labels . . . . . 23  
 Ph Meters . . . . . 29  
 Pitch Fork . . . . . 21  
 Pinning Nails . . . . . 8  
 Plant Bags . . . . . 76  
 Plant Ties . . . . . 9  
 Plastic Mulch, Black & Red . . . . . 62  
 Plug Popper . . . . . 78  
 Pneumatic Stapler . . . . . 8  
 Pole Pruners . . . . . 16-17  
 Policies, Returns & Terms . . . . . 3  
 Polycarbonate . . . . . 57  
 Poly Film . . . . . 60  
 Poly Film Tie Down . . . . . 57  
 Poly Flats . . . . . 66, 69, 71, 74  
 Poly Repair Tape . . . . . 57  
 Pots . . . . . 65-76  
 Pot Labels . . . . . 24, 26-27  
 Pot Sleeves . . . . . 77  
 Potting Soil . . . . . 38  
 Power Tube Fan . . . . . 54  
 Pressure Sensitive Labels . . . . . 26  
 Printing Software . . . . . 25  
 Printers . . . . . 25  
 Printing, Labels . . . . . 25  
 ProCal Pots . . . . . 70  
 Propagation Mats . . . . . 29  
 Propagation Supplies . . . . . 29  
 Pro-Pell-it . . . . . 40  
 Protek Trays . . . . . 36  
 Pruner Grease/Lube . . . . . 19  
 Pruners, Long Reach . . . . . 16-17, 19  
 Pruning Saw . . . . . 16-17, 19  
 Pruning Shears . . . . . 15-19, 22  
 Pulp Pots . . . . . 65  
 Push-on Tags . . . . . 24  
 PVC Rain Gear . . . . . 45

**- R -**

Rain Wear . . . . . 45  
 Rakes . . . . . 21  
 Retro Fit Kit . . . . . 58  
 Ring Knives . . . . . 8  
 Rite in the Rain Notebooks . . . . . 27  
 Root Pouch . . . . . 76  
 Rooting Compounds . . . . . 41  
 Rubber Bands . . . . . 9  
 Rubber Gloves . . . . . 45

**- S -**

Sabert . . . . . 75  
 Safety Glasses & Goggles . . . . . 44  
 SATO . . . . . 23-27  
 Saws . . . . . 16-17, 19, 22  
 Schaefer Fans . . . . . 56  
 Scissors . . . . . 16  
 Seeders . . . . . 77  
 Shade Cloth . . . . . 61  
 Shading Compound . . . . . 56  
 Sharpening Stones . . . . . 13  
 Shearing Knives, Chaps . . . . . 28  
 Shears & Loppers . . . . . 15, 19-20  
 Sheaths . . . . . 12, 19  
 Shepherd Bench Wire . . . . . 51  
 Shipping Rubber Bands . . . . . 8  
 Shovels . . . . . 20-21  
 Shutters . . . . . 54  
 Sickles . . . . . 22  
 Signs, Sign Holders . . . . . 23  
 Slings, Nylon . . . . . 7  
 Slip-On Labels . . . . . 27  
 Soil Amendments . . . . . 38  
 Soil Mixes, OBC . . . . . 38-39  
 Soil Test . . . . . 29  
 Soil Thermometers . . . . . 29  
 Solo Sprayer . . . . . 44  
 Spades . . . . . 20  
 Spot Spitters . . . . . 32  
 Spray Suits . . . . . 44  
 Spreaders . . . . . 42  
 Spring Lock . . . . . 55  
 Sprinklers . . . . . 32  
 Square Pots . . . . . 67, 68, 74, 75  
 Stapler, Hog Ring . . . . . 8  
 Stapler, Pneumatic . . . . . 8  
 Staples . . . . . 8, 11, 62  
 Stakes, Wire & Bamboo . . . . . 14  
 Sterling Heaters . . . . . 53  
 Sticky Strips . . . . . 41  
 Stretch Wrap . . . . . 7  
 Stretch Tie . . . . . 9  
 SunClear . . . . . 56  
 Syphonject . . . . . 42

**- T -**

Table of Contents . . . . . 2  
 Tanio . . . . . 40  
 T-Stakes . . . . . 26  
 Tally Meter . . . . . 28  
 Tapener Products . . . . . 10-11  
 Tapes . . . . . 10-11  
 TDI Plant Containers . . . . . 76

Temperature Controls . . . . . 52, 54  
 Terms & Payment . . . . . 3  
 Texel . . . . . 63  
 Thermal Labels . . . . . 27  
 Thermal Printer . . . . . 25  
 Thermometers . . . . . 29  
 Thermostat . . . . . 54  
 Tie Downs . . . . . 55  
 Tie Tapes . . . . . 10  
 Tools . . . . . 15-22  
 T.O. Trays & Inserts . . . . . 74  
 Tracking Trailers . . . . . 46  
 Traps . . . . . 44  
 Trays . . . . . 36-37, 66, 69, 71-72  
 Tree Box . . . . . 7, 75  
 Tree Caliper . . . . . 8  
 Tree Kote . . . . . 12  
 Tree Moss . . . . . 63  
 Tree Trunk Protectors . . . . . 8  
 Tree Wrap . . . . . 8  
 Trellis Netting . . . . . 28  
 Truck Tarps . . . . . 61  
 Tube Fan . . . . . 59  
 Twine Knives . . . . . 8  
 Twines . . . . . 6  
 Tye Tape . . . . . 10

**- U -**

Utility Bands, Anderson Die . . . . . 69

**- V -**

Vacuum Seeder . . . . . 70  
 Ventilation Control . . . . . 56  
 Vermiculite . . . . . 38  
 Vibro Seeder . . . . . 73

**- W -**

Wagons, Nursery . . . . . 46  
 Warrens T-7 Spreader . . . . . 42  
 Water Heating Systems . . . . . 53  
 Water Shed Rain Wear . . . . . 45  
 Water Soluble Fertilizer . . . . . 40  
 Water Wands & Breakers . . . . . 32-35  
 Watering Supplies . . . . . 32-35  
 Weather-Proof Notebooks . . . . . 27  
 Web Flats . . . . . 66, 69, 71  
 Western Pulp . . . . . 65  
 Wire Baskets . . . . . 4-5  
 Wire Crimpers . . . . . 7  
 Wolverine Shovels & Hoe . . . . . 41  
 Wooden Garden Labels . . . . . 24  
 Woods Rooting Compound . . . . . 39

**- Y -**

Yard Card Signs, Holders . . . . . 23

**- Z -**

Zenport Tools . . . . . 22  
 Zippers . . . . . 58

# OBC NORTHWEST, INC.

NURSERY & GREENHOUSE SUPPLIES

PO BOX 759 CANBY, OR 97013  
Phone: 503-266-2021  
Fax: 503-266-6837

## CREDIT APPLICATION

The following information must be completed **IN FULL** and will be held in the strictest confidence. Please keep a copy for your records. STANDARD TERMS ARE NET 30 DAYS. Return fax 503-266-6837 or email credit application to [obc@obcnw.com](mailto:obc@obcnw.com). Please allow 7 – 10 business days for application to be processed.

Business Name \_\_\_\_\_ Credit Requested \_\_\_\_\_  
Address \_\_\_\_\_ Federal ID# \_\_\_\_\_  
City \_\_\_\_\_ ST \_\_\_\_\_ Zip \_\_\_\_\_ **Tax Exempt: NO ( ) YES ( ) If so, attach certificate**  
Mailing Address, if different \_\_\_\_\_ Tax Exempt/Resale Cert # \_\_\_\_\_  
Telephone \_\_\_\_\_ Fax \_\_\_\_\_ Website \_\_\_\_\_  
Invoice Preference: ( ) Mail ( ) Email Email address \_\_\_\_\_ Are PO's Required? NO ( ) YES ( )  
Years in Business \_\_\_\_\_ Annual Sales \_\_\_\_\_ ( ) Corporation ( ) Partnership ( ) Proprietor ( ) LLC

Principal \_\_\_\_\_ Phone \_\_\_\_\_ Cell \_\_\_\_\_ Email \_\_\_\_\_  
Buyer(s) \_\_\_\_\_  
Accounts Payable: \_\_\_\_\_ Phone \_\_\_\_\_ Cell \_\_\_\_\_ Billing Email \_\_\_\_\_

Bank Reference: (Name) \_\_\_\_\_ Acct \_\_\_\_\_  
Street Address \_\_\_\_\_ City \_\_\_\_\_ State \_\_\_\_\_ Zip \_\_\_\_\_  
Phone: \_\_\_\_\_ Fax \_\_\_\_\_ Contact Person \_\_\_\_\_ Email \_\_\_\_\_  
Operating Line of Credit NO ( ) YES ( )

### Trade References:

Company _____	Company _____	Company _____
<b>Fax</b> _____	<b>Fax</b> _____	<b>Fax</b> _____
Email _____	Email _____	Email _____
Account # _____	Account # _____	Account # _____

**Terms and Conditions of Sale and Related Financial Terms:** OBC Northwest, Inc.'s (OBC) standard payment terms are net 30 days. These terms may vary with promotions and material being purchased. Cash discounts, if offered, are not allowed past discount "Due Date". **Applicant** hereby certifies that full and timely payment will be made for all purchases. In the event any monies are not paid in full on or before the "Due Date", an interest rate shall accrue on said unpaid balance at the rate of 0.75% per month, or the maximum rate allowed by law, until paid in full. Delinquent accounts past 60 days will be frozen until account is paid in full. The **Applicant** shall be responsible for all expenses including, but not limited to, attorney's fees, court costs and all collection fees. Should it become necessary to file suit to enforce payment, **Applicant** agrees that such suit will be brought in the county of Clackamas, state of Oregon. The Applicant acknowledges that the seller retains the absolute right to limit the amount of credit or refuse further credit to the buyer at any time. OBC gladly accepts credit card payments at time of order. **OBC does NOT accept the use of credit/debit cards for any part of your outstanding account balance.** Returned checks will be charged a \$25 processing fee.

**Policies and Procedures:** All pricing is subject to change without prior notice. A deposit of up to 50% may be required on special/custom orders. We will ship via: will call, OBC Truck, UPS, LTL, and US mail. All shipping, unless otherwise authorized is FOB Canby, Oregon. Shipping and handling fees will be charged at current market value. We will not assume responsibility for damaged, lost or stolen shipments. Please contact the carrier directly to report any freight claims within 24 hours. OBC will not be responsible or be held accountable for the abuse or misuse of any product in which we carry, market, or sell. Authorization is required before returns will be accepted. All products returned must be accompanied with the invoice and returned in its original condition, unless product has not performed within written warranties. Goods must be returned within **30 days** of shipment in order to receive credit. Goods that have been special ordered or that are not a stock item may NOT be returned. Burlap, and other specified items, CANNOT be returned. All returns will be assessed a handling charge of up to 20%, unless otherwise authorized. We reserve the right to refuse orders or service to anyone at anytime.

The **Applicant** represents that they have read and fully understands all of the terms and conditions of sale as listed on this application and are authorized to accept these terms and conditions of sale and all facts contained herein are truthful to the best of their knowledge. An electronic copy of application will be deemed as original. No oral agreements or modifications to this credit application will be accepted.

I/We agree to notify OBC promptly of any changes in ownership of the business conducted under the account name, and agree to liability for all charges to the business conducted under the account name unless and until you receive written notice of a change in ownership of that business.

Signature \_\_\_\_\_ Date \_\_\_\_\_  
Print Name \_\_\_\_\_ Title \_\_\_\_\_



**Your greenhouse specialist! (See pages 47-58)**



**OBC NORTHWEST, INC.**  
**Nursery & Greenhouse Supplies**

1076 SW Berg Parkway,  
Canby, Oregon 97013  
800-477-4744 • 503-266-6837 (fax)  
Email: [obc@obcnw.com](mailto:obc@obcnw.com)  
[www.obcnw.com](http://www.obcnw.com)

